

Fashion Seal
Healthcare®



LAB COATS &
PROTECTIVE APPAREL



Fashion Seal Healthcare® **GUARANTEE**

Customers First, Every Time.

“Our 100 years of success is grounded in our commitment to quality, service, technology, and value. As leaders in the uniform market, our dedicated team-members incorporate our corporate values of integrity, performance, and teamwork to every partnership to ensure complete Customer satisfaction.”

*Michael Benstock
Chief Executive Officer*

Style: **1475**
Page: **6**

Wearing
Size: **S**

TABLE OF CONTENTS

4 - 9

*Unisex
Lab Coats*

10 - 15

*Men's
Lab Coats*

16 - 21

*Women's
Lab Coats*

22 - 27

*Coats, Smocks,
Warm-Ups,
Shirts & Wraps*

28 - 33

*Reusable
Protective
Apparel*

34 - 39

*Style
Guide*

40 - 41

*Embroidery
&
The Perfect Fit*

42 - 43

*Style
Chart*

44

*Where Will It
Fall?*

45

*How To Order
&
Return Policy*

46 - 47

Index

UNISEX COATS



Fashion Seal Healthcare® offers a complete assortment of sizes, fits and features to help you conquer your day in comfort and style. See the Style Guide on Page 34 for a complete list of our offerings.

Style: **437**
Page: **8**

Wearing
Size: **S**

Style: **419**
Page: **9**

Wearing
Size: **L**

LONGER LENGTH
41" LAB COATS

MODEL HEIGHT: 6'1"
 WEARING SIZE: L

STYLE
 3495

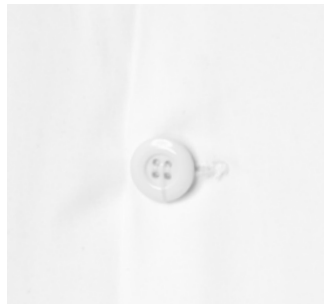
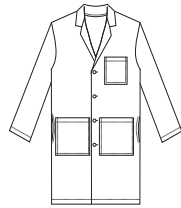
- Length based on size medium
- Button front
- Left chest pocket
- Two lower oversized outside pockets
- Side slits for pocket access

415
 100% Sanforized Cotton Heavyweight Twill

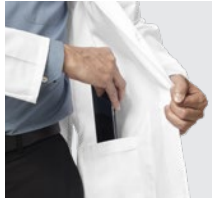
3495 **BEST SELLER**
 65% Polyester / 35% Cotton Poplin

3492
 80% Polyester / 20% Cotton Poplin

Sizes: 2XS-XL
 (2XL, 3XL extra charge)



STYLE
1475



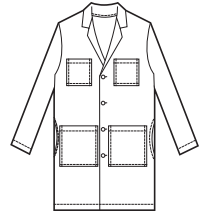
LONGER LENGTH
41" CONSULTATION LAB COAT

MODEL HEIGHT: 5'10"
WEARING SIZE: M

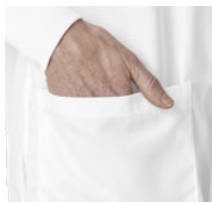
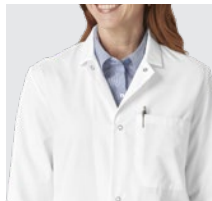
- Length based on size medium
- Button front
- Two chest pockets, within left pocket is a separate double pencil pocket
- Two lower oversized double outside pockets; outer pockets large enough to accommodate a tablet
- Two oversized lower inside pockets
- Side slits for pocket access

1475
65% Polyester / 35% Cotton Fine Line Twill

Sizes: XS-XL
(2XL, 3XL extra charge)



STYLE
439



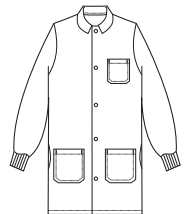
LONGER LENGTH
41" SNAP FRONT LAB COAT

MODEL HEIGHT: 5'9"
WEARING SIZE: S

- Length based on size medium
- Left chest pocket
- Two lower outside pockets
- White Polyester knit cuffs
- Convertible collar
- Side slits for pocket access

439
80% Polyester / 20% Cotton Poplin

Sizes: 2XS-XL
(2XL, 3XL extra charge)



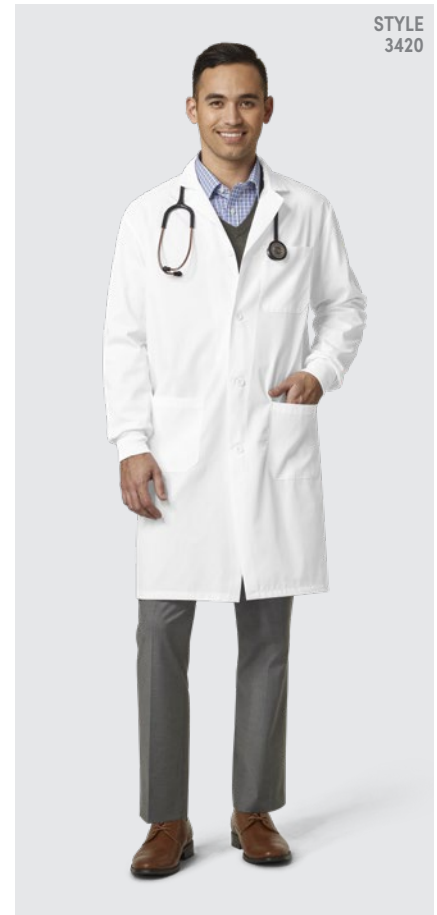
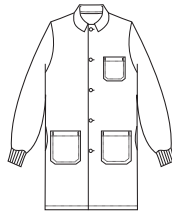
**LONGER LENGTH
41" LAB COAT**

MODEL HEIGHT: 6'1"
WEARING SIZE: M

- Length based on size medium
- Button front
- Left chest pocket
- Two lower outside pockets
- White Polyester knit cuffs
- Convertible collar
- Side slits for pocket access

3420
80% Polyester / 20% Cotton Poplin

Sizes: 2XS-XL
(2XL, 3XL extra charge)



STYLE
3420

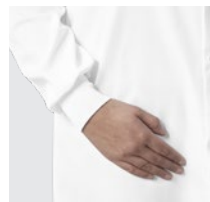
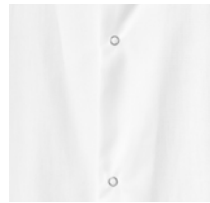
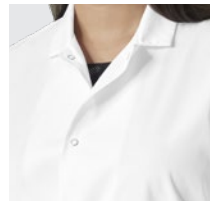
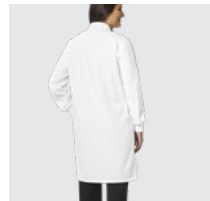
**LONGER LENGTH
41" SNAP FRONT LAB COAT**

MODEL HEIGHT: 5'9"
WEARING SIZE: M

- Length based on size medium
- Snap front
- No pockets
- White Polyester knit cuffs
- Convertible collar
- No side slits

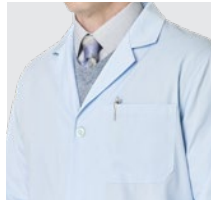
3419
80% Polyester / 20% Cotton Poplin

Sizes: 2XS-XL
(2XL, 3XL extra charge)



STYLE
3419

STYLE
431



LONGER LENGTH
41" LAB COATS - COLORS

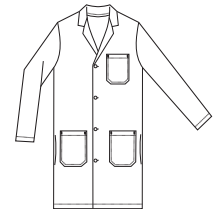
MODEL HEIGHT: 6'1"
WEARING SIZE: L

- Length based on size medium
- Button front
- Left chest pocket
- Two lower outside pockets
- Side slits for pocket access

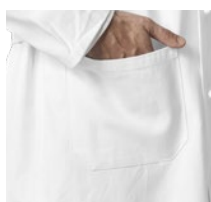
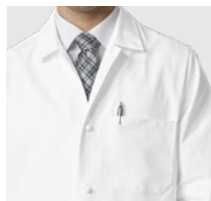
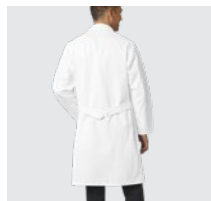
430 Azure, **431** Navy
65% Polyester / 35% Cotton Poplin

Colors: AZURE NAVY

Sizes: 2XS-XL
(2XL, 3XL extra charge)



STYLE
437



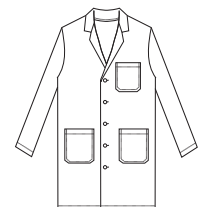
LONGER LENGTH
41" KNOT BUTTON LAB COAT

MODEL HEIGHT: 6'1"
WEARING SIZE: M

- Length based on size medium
- Left chest pocket
- Two lower outside pockets
- Two piece attached back belt with two cloth knot buttons for adjustable closure

437
100% Sanforized Cotton Heavyweight Twill

Sizes: 2XS-XL
(2XL, 3XL extra charge)



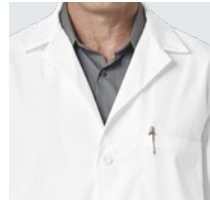
SHORTER LENGTH
34" SHORT SLEEVE LAB COAT

MODEL HEIGHT: 5'10"
WEARING SIZE: M

- Length based on size medium
- Button front
- Left chest pocket
- Two lower outside pockets

3409
65% Polyester / 35% Cotton Poplin

Sizes: 2XS-XL
(2XL, 3XL extra charge)



STYLE
3409

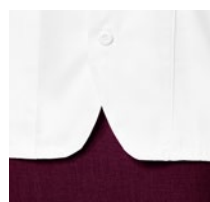
SHORTER LENGTH
30" CONSULTATION LAB JACKET

MODEL HEIGHT: 5'9"
WEARING SIZE: S

- Length based on size medium
- Button front
- Oversized left chest pocket with pencil division
- Four lower outside pockets: two outer oversized; large enough to accommodate a tablet
- Two oversized lower inside pockets; large enough to accommodate a tablet

419
65% Polyester / 35% Cotton Fine Line Twill

Sizes: 2XS-XL
(2XL, 3XL extra charge)



STYLE
419

MEN'S COATS



Fashion Seal Healthcare® offers a complete assortment of sizes, fits and features to help you conquer your day in comfort and style. See the Style Guide Page 35 for a complete list of our offerings.

Style: **180**
Page: **15**

Wearing
Size: **L**

LONGEST LENGTH
45" EXTRA LONG LAB COATS

MODEL HEIGHT: 6'1"
 WEARING SIZE: 40

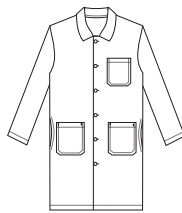
- Length based on size 40
- Sleeves are 1½" longer
- Button front
- Left chest pocket
- Two lower outside pockets
- Side slits for pocket access

6480
 65% Polyester / 35% Cotton Heavyweight Twill

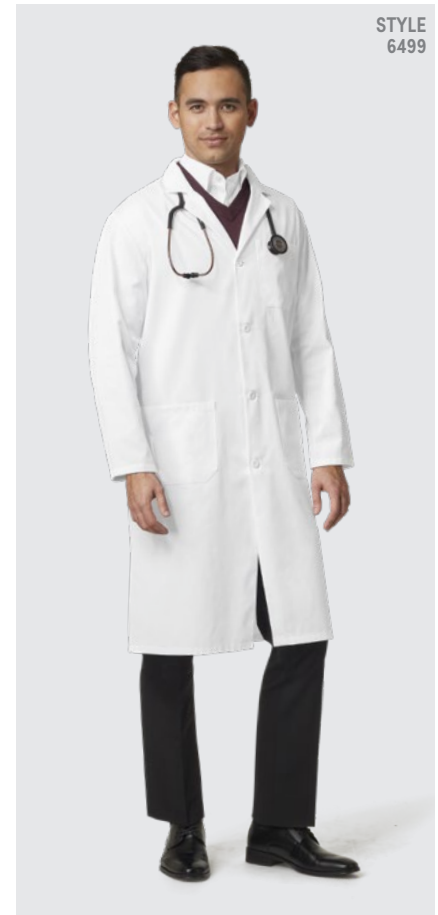
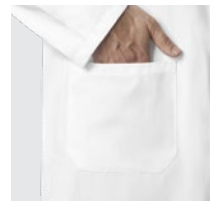
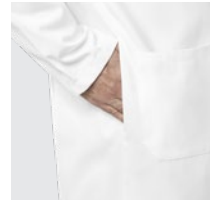
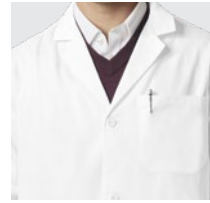
- Stitched down back belt¹

6499
 65% Polyester / 35% Cotton Fine Line Twill

Sizes: 38-50
 (52-56 extra charge)



STITCHED
 DOWN BACK
 BELT ON
 STYLE
 6499¹



STYLE
 6499

LONGER LENGTH
41" KNEE LENGTH LAB COATS

MODEL HEIGHT: 5'11"
 WEARING SIZE: L or 42

- Length based on size 40
- Cloth knot buttons²
- Left chest pocket
- Two lower outside pockets
- Side slits for pocket access
- Two piece attached back belt¹

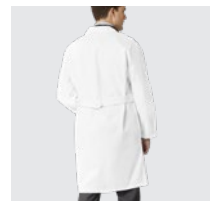
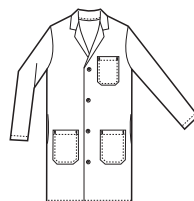
423
 100% Sanforized Cotton Heavyweight Twill

Sizes: 32-50
 (52-56 extra charge)

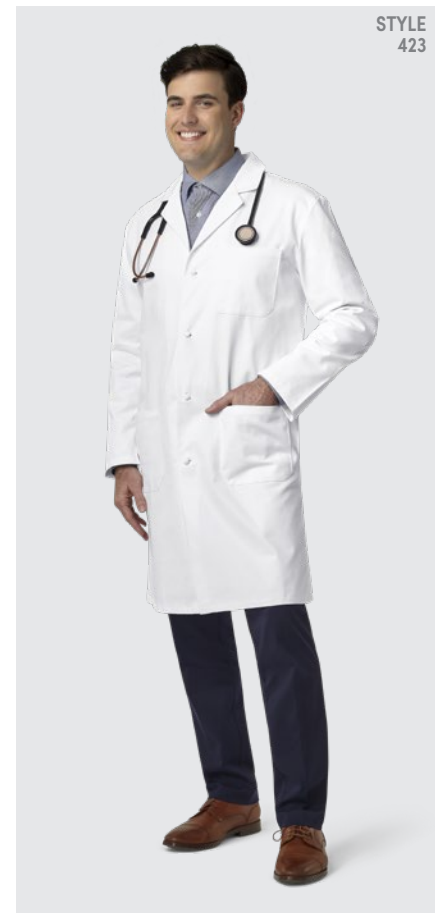
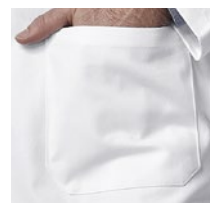
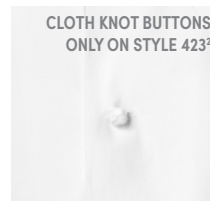
- Length based on size medium
- Button front
- Stitched down back belt

433
 80% Polyester / 20% Cotton Poplin

Sizes: XS-XL
 (2XL, 3XL extra charge)

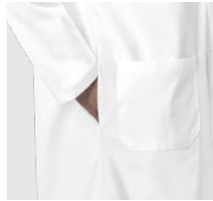
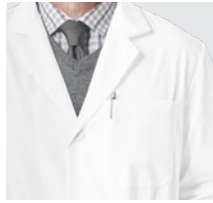


CLOTH KNOT BUTTONS
 ONLY ON STYLE 423²



STYLE
 423

STYLE
485



**LONGER LENGTH
41" KNEE LENGTH LAB COATS**

MODEL HEIGHT: 5'10"
WEARING SIZE: 38

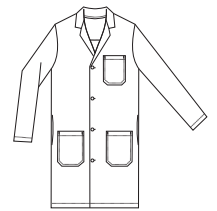
- Length based on size 40
- Button front
- Left chest pocket
- Two lower outside pockets
- Side slits for pocket access

420
100% Sanforized Cotton Heavyweight Twill

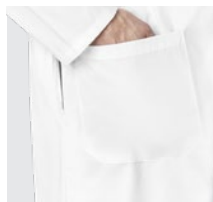
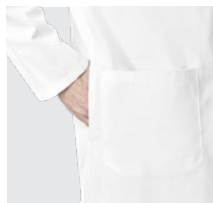
482
65% Polyester / 35% Cotton Heavyweight Twill

485
65% Polyester / 35% Cotton Poplin

Sizes: 32-50
(52-56 extra charge)



STYLE
471



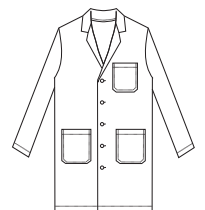
**LONGER LENGTH
41" SNAP FRONT KNEE LENGTH LAB COAT**

MODEL HEIGHT: 6'1"
WEARING SIZE: L

- Length based on size medium
- Left chest pocket
- Two lower outside pockets
- Side slits for pocket access

471
65% Polyester / 35% Cotton Heavyweight Twill

Sizes: XS-XL
(2XL, 3XL extra charge)



MEDIUM LENGTH
39" STAFF LENGTH LAB COATS

MODEL HEIGHT: 6'2"
 WEARING SIZE: L or 40

STYLE
 499

- Length based on size 40
- Button front
- Left chest pocket
- Two lower outside pockets
- Stitched down back belt¹
- Side slits for pocket access²

499
 65% Polyester / 35% Cotton Fine Line Twill

Sizes: 32-50
 (52-56 extra charge)

- Length based on size medium
- Button front
- Left chest pocket
- Two lower outside pockets

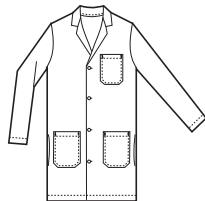
432
 65% Polyester / 35% Cotton Fashion Fab Poplin

Sizes: XS-XL
 (2XL, 3XL extra charge)

- Length based on size medium
- Button front
- Left chest pocket with pencil stitch
- Two lower outside pockets
- Side slits for pocket access²

412
 80% Polyester / 20% Cotton Poplin

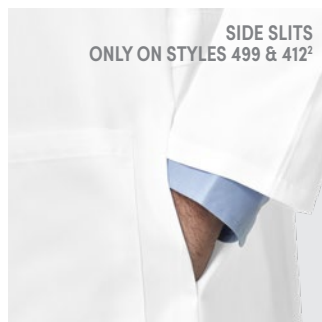
Sizes: XS-XL
 (2XL, 3XL extra charge)



STYLE
 499

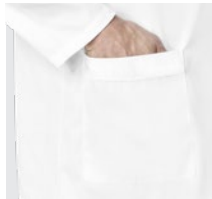
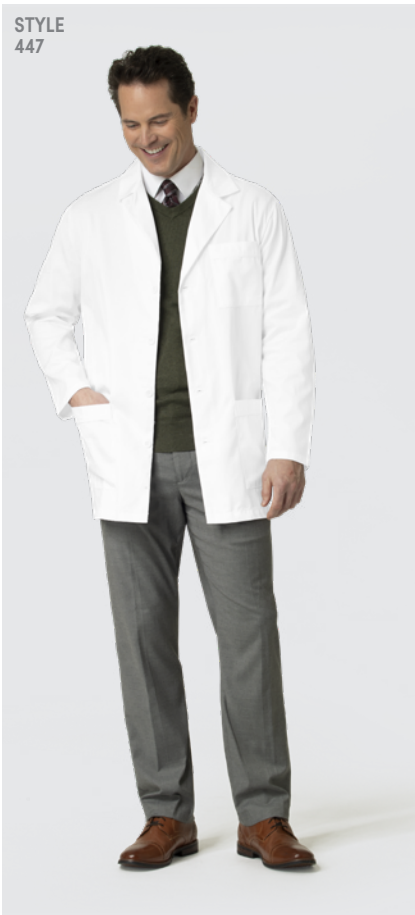


STITCHED DOWN BACK BELT
 ONLY ON STYLE 499¹



SIDE SLITS
 ONLY ON STYLES 499 & 412²

STYLE
447



SHORTER LENGTH
34" SHORT LAB COAT

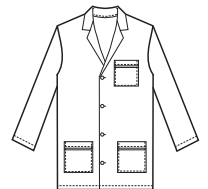
MODEL HEIGHT: 6'1"
WEARING SIZE: 42

- Length based on size 40
- Button front
- Left chest pocket with piping
- Two lower outside pockets with piping

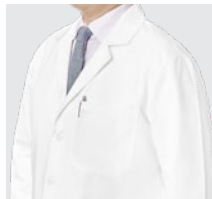
447

65% Polyester / 35% Cotton Fine Line Twill

Sizes: 32-50
(52-56 extra charge)



STYLE
6284



SHORTER LENGTH
32" EXTRA LONG CONSULTATION LAB JACKET

MODEL HEIGHT: 6'1"
WEARING SIZE: M

- Length based on size medium
- Button front
- Left chest pocket
- Two lower outside pockets
- Two lower inside pockets
- Center back vent

6284

65% Polyester / 35% Cotton Heavyweight Twill

Sizes: M-XL
(2XL, 3XL extra charge)



SHORTER LENGTH
30" CONSULTATION LAB JACKETS

MODEL HEIGHT: 5'10"
 WEARING SIZE: M

- Length based on size medium
- Button front
- Left chest pocket
- Two lower outside pockets
- Two lower inside pockets
- Center back vent

175
 65% Polyester / 35% Cotton Poplin

Sizes: XS-XL
 (2X, 3XL extra charge)



STYLE
 175

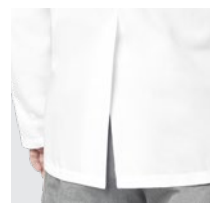
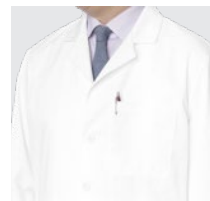
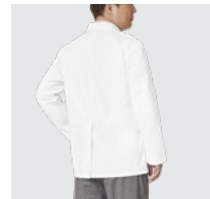
SHORTER LENGTH
30" CONSULTATION LAB JACKET

MODEL HEIGHT: 5'9"
 WEARING SIZE: 38

- Length based on size medium
- Button front
- Left chest outside pocket
- Left chest inside pocket
- Two lower oversized outside pockets
- Two lower oversized inside pockets
- Center back vent

180
 65% Polyester / 35% Cotton Heavyweight Twill

Sizes: XS-XL
 (2XL, 3XL extra charge)



STYLE
 180

WOMEN'S COATS



Fashion Seal Healthcare® offers a complete assortment of sizes, fits and features to help you conquer your day in comfort and style. See the Style Guide Page 36 for a complete list of our offerings.

Style: **128**
Page: **19**

Wearing
Size: **S**

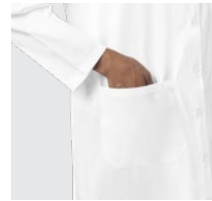
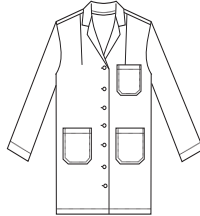
LONGEST LENGTH
41" FULL LENGTH LAB COAT

MODEL HEIGHT: 5'10"
WEARING SIZE: XS

- Length based on size medium
- Button front
- Left chest pocket
- Two lower outside pockets
- Fitted back
- Two piece attached back belt with button closure

438
65% Polyester / 35% Cotton Poplin

Sizes: 2XS-XL
(2XL, 3XL extra charge)



STYLE
438

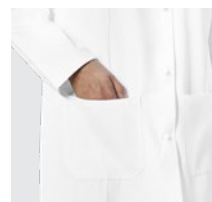
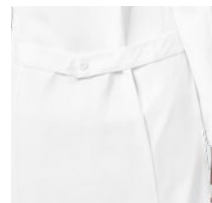
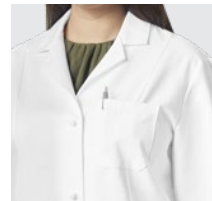
LONGER LENGTH
39" KNOT BUTTON TRADITIONAL LENGTH LAB COAT

MODEL HEIGHT: 5'9"
WEARING SIZE: L

- Length based on size medium
- Left chest pocket
- Two lower outside pockets
- Front and back princess seams
- Two piece attached back belt

3301
100% Sanforized Cotton Heavyweight Twill

Sizes: XS-XL
(2XL, 3XL extra charge)



STYLE
3301

STYLE
477



STYLE
477



TWO PIECE BACK BELT
ONLY ON STYLE 477!



**LONGER LENGTH
39" TRADITIONAL LENGTH LAB COATS**

MODEL HEIGHT: 5'9"
WEARING SIZE: L or 18

- Length based on size 8
- Button front
- Left chest pocket
- Two lower outside pockets
- Two piece attached back belt with button closure!

477
65% Polyester / 35% Cotton Poplin

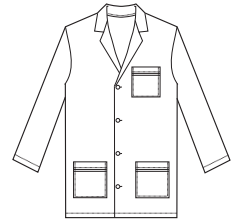
486
65% Polyester / 35% Cotton Heavyweight Twill

Sizes: 6-20, 42-46
(48-50 extra charge)

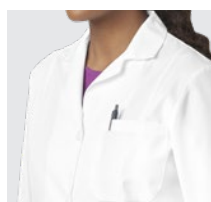
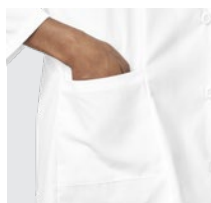
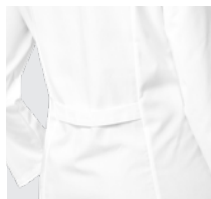
- Length based on size medium
- Stitched down back belt

400
80% Polyester / 20% Cotton Poplin

Sizes: 2XS-XL
(2XL, 3XL extra charge)



STYLE
444



**MEDIUM LENGTH
35" FASHION LAB COAT**

MODEL HEIGHT: 5'10"
WEARING SIZE: XS

- Length based on size medium
- Button front
- Left chest pocket
- Two lower outside pockets
- Half-back belt
- Front and back princess seams

444
65% Polyester / 35% Cotton Poplin

Sizes: 2XS-XL
(2XL, 3XL extra charge)



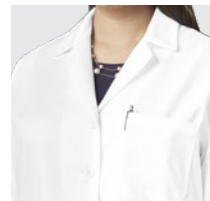
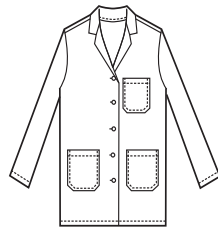
SHORTER LENGTH
34" SKIMMER LENGTH LAB COATS

MODEL HEIGHT: 5'9"
 WEARING SIZE: L

- Length based on size medium
- Button front
- Left chest pocket
- Two lower outside pockets
- Stitched down back belt

436
 65% Polyester / 35% Cotton Fine Line Twill

Sizes: 2XS-XL
 (2XL, 3XL extra charge)



STYLE
 436

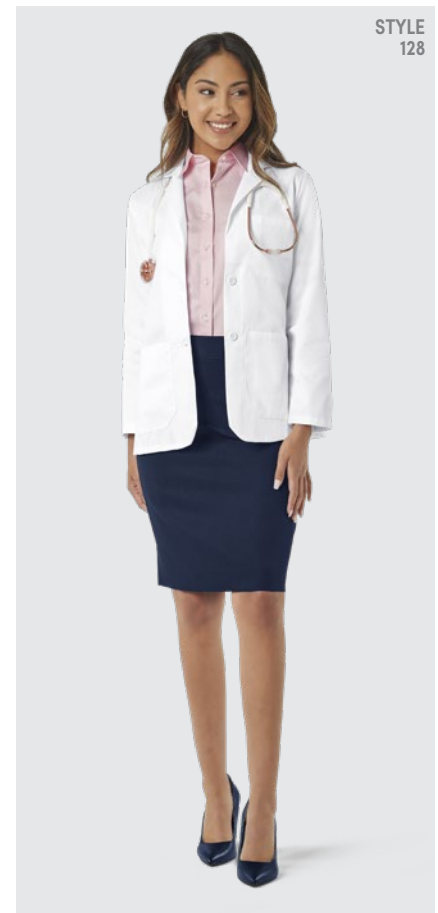
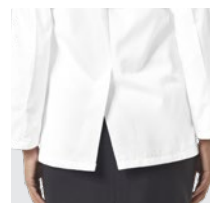
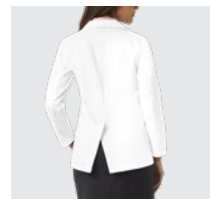
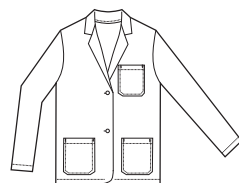
SHORTER LENGTH
28" CONSULTATION LAB JACKET

MODEL HEIGHT: 5'9"
 WEARING SIZE: S

- Length based on size medium
- Button front
- Left chest pocket
- Two lower outside pockets
- Two inside pockets
- Fuller sleeves
- Center back vent

128
 65% Polyester / 35% Cotton Fine Line Twill

Sizes: 2XS-XL
 (2XL, 3XL extra charge)



STYLE
 128

STYLE
105



SHORTER LENGTH
30" SHORT SLEEVE LAB JACKET

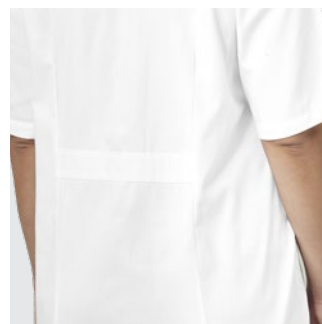
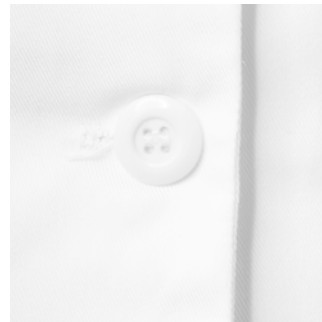
MODEL HEIGHT: 5'9"
WEARING SIZE: L

- Length based on size medium
- Button front
- Left chest pocket
- Two lower angled pockets
- Front darts
- Back darts with stitched down back belt

105

65% Polyester / 35% Cotton Fine Line Twill

Sizes: 2XS-XL
(2XL, 3XL extra charge)



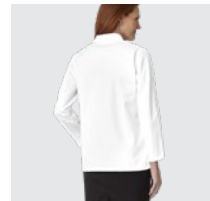
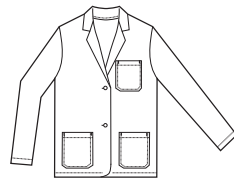
SHORTER LENGTH
28" TRADITIONAL LAB JACKET

MODEL HEIGHT: 5'9"
 WEARING SIZE: S

- Length based on size medium
- Button front
- Left chest pocket
- Two lower outside pockets
- Fuller sleeves

125
 65% Polyester / 35% Cotton Fine Line Twill

Sizes: 2XS-XL
 (2XL, 3XL extra charge)



WHAT LENGTH WORKS FOR ME?

To find your perfect length, please refer to our helpful **Where Will It Fall** guide on page 44.



**COATS,
SMOCKS,
WARM-UPS,
SHIRTS &
WRAPS**



Fashion Seal Healthcare® offers a complete assortment of sizes, fits and features to help you conquer your day in comfort and style. See the Style Guide Page 37 for a complete list of our offerings.

Style: **195**
Page: **25**

Wearing
Size: **M**

WOMEN'S TRADITIONAL SMOCKS

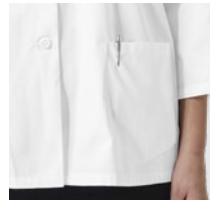
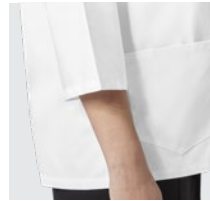
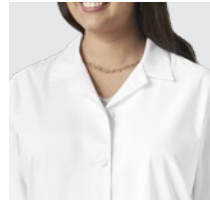
MODEL HEIGHT: 5'9"
WEARING SIZE: L

- Back yoke with box pleat
- 3/4 length sleeves
- Two lower pockets

61160 Burgundy, 61010 Royal, 61150 White
65% Polyester / 35% Cotton Poplin

Colors: BURGUNDY ROYAL WHITE

Sizes: XS-XL
(2XL-4XL extra charge)



STYLE
61160

UNISEX COUNTER COATS

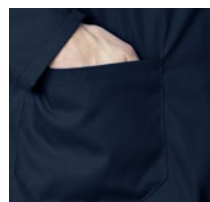
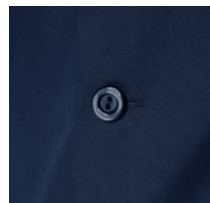
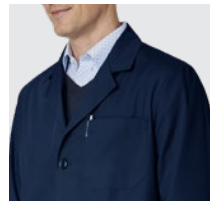
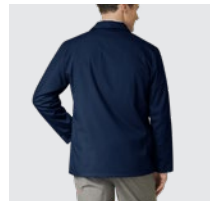
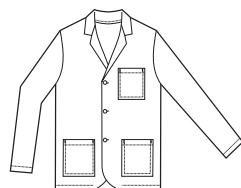
MODEL HEIGHT: 6'1"
WEARING SIZE: L

- Button front
- Left chest pocket
- Two lower patch pockets

169 Navy, 165 Royal
65% Polyester / 35% Cotton Poplin

Colors: NAVY ROYAL

Sizes: S-XL
(2XL, 3XL extra charge)



STYLE
169

STYLE
193



MODEL HEIGHT: 5'9"
WEARING SIZE: S

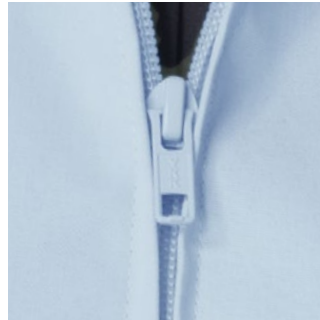
UNISEX ZIP FRONT LAB SHIRTS

- Left chest pocket
- Side vents
- Back yoke
- Stitched down back belt
- Two lower angled pockets

193 Azure, 190 White
65% Polyester / 35% Cotton Poplin

Colors: AZURE WHITE

Sizes: S-XL
(2XL, 3XL extra charge)



UNISEX ZIP FRONT CASUAL SHIRTS

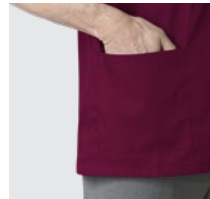
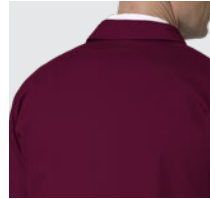
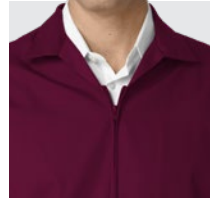
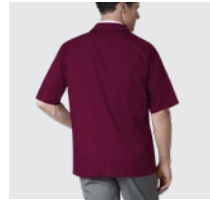
MODEL HEIGHT: 6'1"
WEARING SIZE: L

- Two lower patch pockets

189 Burgundy, 186 Navy, 195 Royal
65% Polyester / 35% Cotton Poplin

Colors: BURGUNDY NAVY ROYAL

Sizes: S-XL
(2XL, 3XL extra charge)



UNISEX WARM-UPS

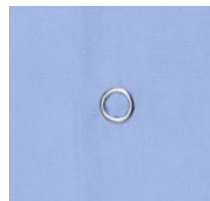
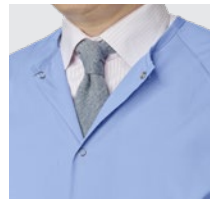
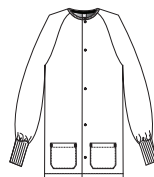
MODEL HEIGHT: 5'9"
WEARING SIZE: S

- Raglan sleeves
- Two lower pockets
- Scissor holder in right pocket
- Snap front closure
- Coordinating knit cuffs

7690 Ciel Blue, 7696 Navy, 7699 White
65% Polyester / 35% Cotton Poplin

Colors: CIEL BLUE NAVY WHITE

Sizes: XS-XL
(2XL-5XL extra charge)



STYLE
3255

MODEL HEIGHT: 6'1"
WEARING SIZE: M

37" UNISEX REVERSIBLE CLOSURE WRAP

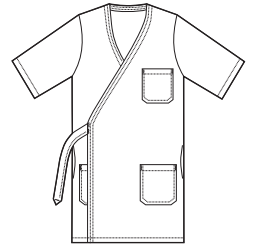
- Length based on size medium
- Three large patch pockets
- Bartacked belt
- Side slits for pocket access
- Three quarter length sleeves

3255 Royal

65% Polyester / 35% Cotton Poplin

Colors: ROYAL

Sizes: S-XL
(2XL, 3XL extra charge)



WOMEN'S CARDIGAN

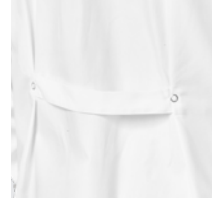
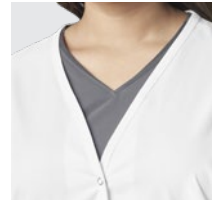
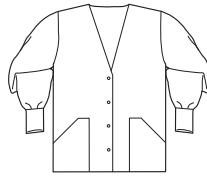
MODEL HEIGHT: 5'9"
WEARING SIZE: L

- Set-in sleeves
- Two lower pockets
- Scissor holder in right pocket
- Snap front closure
- Coordinating knit cuffs
- Center back half belt

7364 White
65% Polyester / 35% Cotton Poplin

Colors: WHITE

Sizes: XS-XL
(2XL-4XL extra charge)



HOW TO FIND YOUR FIT

To find your perfect fit, please refer to our helpful size guides on page 41.

THE PERFECT FIT

HOW TO MEASURE

SKIRT/SLACKS: With arms at your sides, measure around your upper body, under your armpits and over the fullest part of your chest and shoulder blades.

WAIST: Measure around your waist. The waist measurement should be taken from the Natural Waist point to the point where your feet are to the floor. Measure at this point, keeping the tape comfortably loose around your waist.

LEGS: Stand with your feet together and measure around the fullest part of your legs. Approximately 17" below your knee.

WOMEN'S MEASURING GUIDE

MEN'S MEASURING GUIDE

MODERN FIT vs CLASSIC FIT

Compared to the Classic Fit, Modern Fit is:

- Slimmer in the body
- Tailored in the shoulders
- Made of a softer, stretchier fabric
- Slightly shorter in length

SIZE AND CONVERSION CHARTS

Women's Size	XS	X	S	M	L	XL	2XL	3XL	4XL
Waist	28-29	29-30	30-31	31-32	32-33	33-34	34-35	35-36	36-37
Waist	28-29	29-30	30-31	31-32	32-33	33-34	34-35	35-36	36-37
Waist	28-29	29-30	30-31	31-32	32-33	33-34	34-35	35-36	36-37
Waist	28-29	29-30	30-31	31-32	32-33	33-34	34-35	35-36	36-37

All illustrations and specifications contained herein are for illustrative purposes only and are based on the best product information available at the time of printing. We reserve the right to make changes in color, price, materials, finishes, brands of fabric and quantities of any time. Styles may be discontinued without notice. Size and color representation is shown as close as possible to the actual color of the product.

(800) 676-4847 | www.FashionSealHealthcare.com 41



REUSABLE PROTECTIVE APPAREL

With our interest in being more environmentally responsible, we now offer a large selection of **PFAS-Free Reusable Protective Apparel**.



Fashion Seal Healthcare® offers a complete assortment of sizes, fits and features to help you conquer your day in comfort and style. See the Style Guide Page 38-39 for a complete list of our offerings.

Style: **6422**
Page: **31**
Wearing
Size: **S**



Style: **6420**
Page: **30**
Wearing
Size: **M**



Stylish and comfortable cover garments designed for use in compliance programs mandated under OSHA's Rule 29 CFR, Part 1910.1030, "Occupational Exposure to Bloodborne Pathogens-Final Rule."

All RPA garments feature a long lasting grid for process cycle control.

TEXTURE SHIELD®

Constructed from 100% high density continuous filament texturized Polyester yarns, offering a combination of fluid-resistance and comfort.

FASHION SHIELD®

A high count, densely woven fabric employing 100% continuous filament man-made Polyester yarns, offering excellent fluid resistance properties.

D-STAT® PLUS

Constructed from 99% high density continuous filament texturized Polyester yarns and 1% Conductive Carbon yarn, offering a combination of higher fluid resistance, comfort and static control.

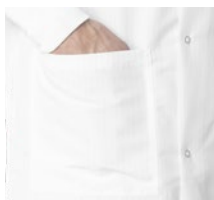
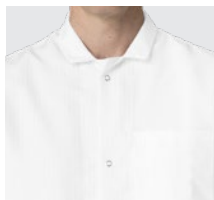
TEXTURE SHIELD D-STAT®

Constructed from 99% high density continuous filament texturized Polyester yarns and 1% Conductive Carbon yarn, offering a combination of fluid resistance, comfort and static control.

FASHION SHIELD D-STAT®

Constructed from 99% high density continuous filament Polyester yarns and 1% Conductive Carbon yarn, offering a combination of fluid resistance, comfort and static control.

STYLE 6428



STYLE 6428

ALL BARRIER PROTECTIVE COATS

MODEL HEIGHT: 6'1"
WEARING SIZE: L

- Entire coat constructed of single-ply fluid-resistant barrier fabric
- Snap closure
- Left chest pocket
- Two lower pockets
- Side slits for pocket access
- Knit cuffs
- Style 6428 is PFAS-Free

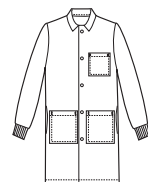
6405 White
D-Stat® PLUS

6410 White
D-Stat® PLUS with lighter weight Comfort Back

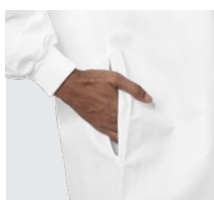
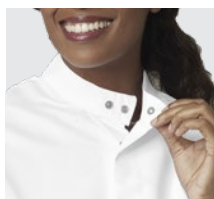
6428 White
PFAS-Free Texture Shield D-Stat®

Colors: WHITE

Sizes: XS-XL
(2XL, 3XL extra charge)



STYLE 6432



PROTECTIVE COATS WITH SNAP CLOSURE AT NECK

MODEL HEIGHT: 5'10"
WEARING SIZE: XS

- Front and sleeves constructed of single-ply fluid-resistant barrier fabric
- Back constructed of Polyester / Cotton blend
- Concealed placket front with snap closure
- Throat-Guard collar with adjustable snap closure for improved neck protection
- Left chest pocket
- Two lower pockets
- Side slits for pocket access
- Back vent
- Knit cuffs
- PFAS-Free Fabric
- Style 6432 has no pockets

6420 Ciel Blue, 6419 Navy, 6418* White
PFAS-Free Texture Shield® (Front) Polyester / Cotton Blend (Back)

6426 Ciel Blue, 6425 Navy, 6427 White
PFAS-Free Texture Shield D-Stat® (Front) Polyester / Cotton Blend (Back)

6432 White
PFAS-Free Texture Shield® (Front) Polyester / Cotton Blend (Back)

Colors: CIEL BLUE NAVY WHITE

Sizes: XS-XL
(2XL, 3XL extra charge)

*Style 6418 available up to 6XL (2XL-6XL extra charge)



**PROTECTIVE COATS
WITH "HOOK & LOOP" CLOSURE AT NECK**

MODEL HEIGHT: 5'10"
WEARING SIZE: M

- Front and sleeves constructed of single-ply fluid-resistant barrier fabric
- Back constructed of Polyester / Cotton blend
- Concealed placket front with snap closure
- Throat-Guard collar with "hook and loop" closure for improved neck protection
- Two lower pockets
- Back vent
- Knit cuffs
- PFAS-Free Fabric

6431 Ciel Blue, 6430 White

PFAS-Free Fashion Shield® (Front) Polyester / Cotton Blend (Back)

6429 White

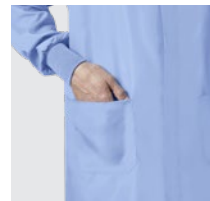
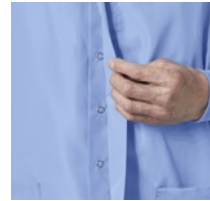
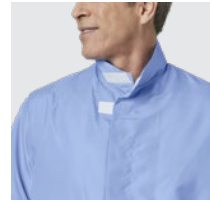
PFAS-Free Texture Shield D-Stat® (Entire Garment)

Colors:

CIEL BLUE

WHITE

Sizes: XS-XL
(2XL, 3XL extra charge)



STYLE
6431

**PROTECTIVE COAT
WITH "HOOK & LOOP" CLOSURE AT NECK**

MODEL HEIGHT: 5'9"
WEARING SIZE: S

- Front and sleeves constructed of single-ply fluid-resistant barrier fabric
- Back constructed of Polyester / Cotton blend
- Concealed placket front with snap closure
- Throat-Guard collar with "hook and loop" closure for improved neck protection
- Left chest pocket
- Two lower pockets
- Back vent
- Knit cuffs
- Chest pocket
- PFAS-Free Fabric

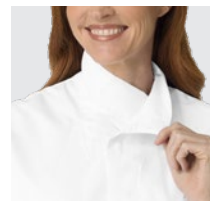
6422 White

PFAS-Free Texture Shield® (Front) Polyester / Cotton Blend (Back)

Colors:

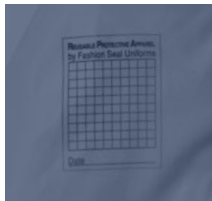
WHITE

Sizes: XS-XL
(2XL, 3XL extra charge)



STYLE
6422

STYLE
535



MODEL HEIGHT: 5'9"

WEARING SIZE: L

BARRIER-FRONT PRECAUTION GOWNS

- Front and sleeves constructed of single-ply fluid-resistant barrier fabric
- Back constructed of yellow Polyester / Cotton blend fabric
- Two sets of tie closures (one at back of neck, one at waist)
- Style 535 is PFAS-Free

- 535 Yellow**
PFAS-Free Fashion Shield®
- 42½" length
 - 55½" sweep
 - White knit cuffs

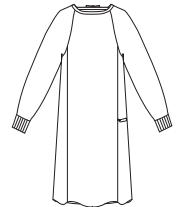
- 504 Blue Mist**
Texture Shield®
- 48½" length
 - 60½" sweep
 - Coordinating color knit cuffs

Colors:

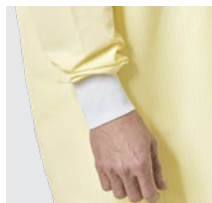
BLUE MIST

YELLOW

Sizes: L



STYLE
512



MODEL HEIGHT: 5'10"

WEARING SIZE: L

ALL-BARRIER PRECAUTION GOWNS

- Entire garment constructed of single-ply fluid-resistant barrier fabric
- Two sets of tie closures (one at back of neck, one at waist)
- White knit cuffs
- PFAS-Free Fabric

- 511* Yellow**
PFAS-Free Fashion Shield®
- 44" length
 - 57" sweep

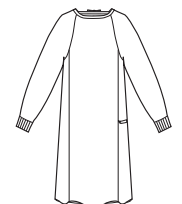
- 512* Yellow**
PFAS-Free Fashion Shield D-Stat®
- 44" length
 - 57" sweep

Colors:

YELLOW

Sizes: One Size Fits Most

* Also available in size 3XL at extra charge



PROTECTIVE APRON GOWNS

MODEL HEIGHT: 6'1"
WEARING SIZE: L

- Entire garment constructed of single-ply fluid-resistant barrier fabric
- Backless design adds to the comfort in non-climate controlled areas (i.e. soiled linen and decontamination)
- Two sets of tie closures (one at the back of the neck and one at waist)
- Styles 529 and 526 are PFAS-Free

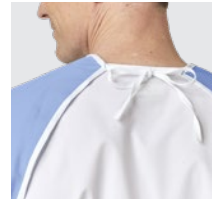
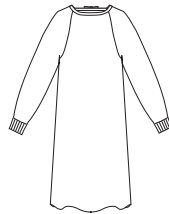
529 Ciel Blue (white knit cuffs)
PFAS-Free Fashion Shield®

584 Blue Mist (elasticized wrists)
Texture Shield®

526 Ciel Blue (ciel blue knit cuffs)
PFAS-Free Texture Shield D-Stat®

Colors: BLUE MIST CIEL BLUE

Sizes: L-XL



PROTECTIVE SHORT COATS

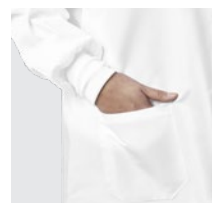
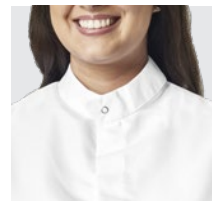
MODEL HEIGHT: 5'9"
WEARING SIZE: L

- Front and sleeves constructed of single-ply fluid-resistant barrier fabric
- Back constructed of Polyester / Cotton blend fabric
- Concealed placket front with snap closure
- Throat-Guard collar with adjustable snap closure for improved neck protection
- Two lower pockets
- Knit cuffs
- PFAS-Free Fabric

6424 Ciel Blue, 6423 White
PFAS-Free Texture Shield® (Front) Polyester / Cotton Blend (Back)

Colors: CIEL BLUE WHITE

Sizes: XS-XL
(2XL, 3XL extra charge)



PG. 5



41" Lab Coats

- Length based on size medium
- Button front
- Left chest pocket
- Two lower oversized outside pockets
- Side slits for pocket access

2XS-XL (2XL, 3XL extra charge)
 100% Sanforized Cotton Heavyweight Twill
 White.....**415**
 65% Polyester / 35% Cotton Poplin
 White.....**3495**
 80% Polyester / 20% Cotton Poplin
 White.....**3492**

PG. 6

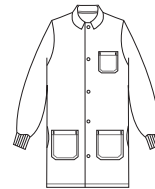


41" Consultation Lab Coat

- Length based on size medium
- Button front
- Two chest pockets, within left pocket is a separate double pencil pocket
- Two lower oversized double outside pockets; outer pockets large enough to accommodate a tablet
- Two oversized lower inside pockets
- Side slits for pocket access

XS-XL (2XL, 3XL extra charge)
 65% Polyester / 35% Cotton Fine Line Twill
 White.....**1475**

PG. 6

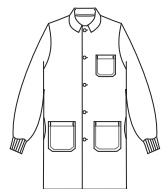


41" Snap Front Lab Coat

- Length based on size medium
- Left chest pocket
- Two lower outside pockets
- White Polyester knit cuffs
- Convertible collar
- Side slits for pocket access

2XS-XL (2XL, 3XL extra charge)
 80% Polyester / 20% Cotton Poplin
 White.....**439**

PG. 7



41" Lab Coats

- Length based on size medium
- Button front
- Left chest pocket
- Two lower outside pockets
- White Polyester knit cuffs
- Convertible collar
- Side slits for pocket access

2XS-XL (2XL, 3XL extra charge)
 80% Polyester / 20% Cotton Poplin
 White.....**3420**

PG. 7

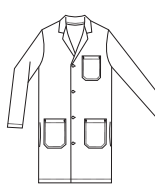


41" Snap Front Lab Coat

- Length based on size medium
- Snap front
- No pockets
- White Polyester knit cuffs
- Convertible collar
- No side slits

2XS-XL (2XL, 3XL extra charge)
 80% Polyester / 20% Cotton Poplin
 White.....**3419**

PG. 8

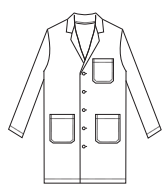


41" Lab Coats - Colors

- Length based on size medium
- Button front
- Left chest pocket
- Two lower outside pockets
- Side slits for pocket access

2XS-XL (2XL, 3XL extra charge)
 65% Polyester / 35% Cotton Poplin
 Azure.....**430**
 Navy.....**431**

PG. 8



41" Knot Button Lab Coat

- Length based on size medium
- Left chest pocket
- Two lower outside pockets
- Two piece attached back belt with two cloth knot buttons for adjustable closure

2XS-XL (2XL, 3XL extra charge)
 100% Sanforized Cotton Heavyweight Twill
 White.....**437**

PG. 9

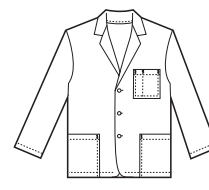


34" Short Sleeve Lab Coat

- Length based on size medium
- Button front
- Left chest pocket
- Two lower outside pockets

2XS-XL (2XL, 3XL extra charge)
 65% Polyester / 35% Cotton Poplin
 White.....**3409**

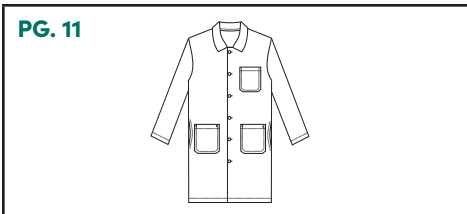
PG. 9



30" Consultation Lab Jacket

- Length based on size medium
- Button front
- Oversized left chest pocket with pencil division
- Four lower outside pockets; two outer oversized; large enough to accommodate a tablet
- Two oversized lower inside pockets; large enough to accommodate a tablet

2XS-XL (2XL, 3XL extra charge)
 65% Polyester / 35% Cotton Fine Line Twill
 White.....**419**



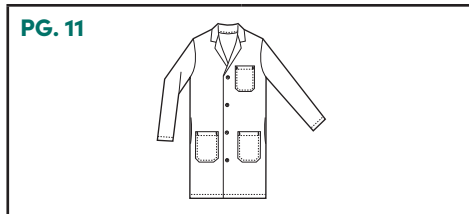
PG. 11

45" Extra Long Lab Coat

- Length based on size 40
- Sleeves are 1/2" longer
- Button front
- Left chest pocket
- Two lower outside pockets
- Side slits for pocket access

38-50 (52-56 extra charge)
65% Polyester / 35% Cotton Heavyweight Twill
White.....**6480**

• Stitched down back belt
65% Polyester / 35% Cotton Fine Line Twill
White.....**6499**



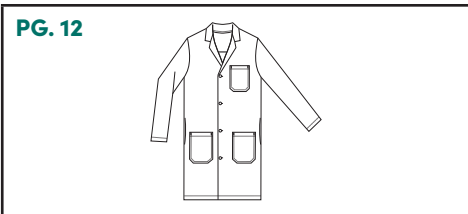
PG. 11

41" Knee Length Lab Coats

- Length based on size 40
- Cloth knot buttons
- Left chest pocket
- Two lower outside pockets
- Two piece attached back belt
- Side slits for pocket access

32-50 (52-56 extra charge)
100% Sanforized Cotton Heavyweight Twill
White.....**423**

• Length based on size medium
• Button front
• Stitched down back belt
XS-XL (2XL, 3XL extra charge)
80% Polyester / 20% Cotton Poplin
White.....**433**



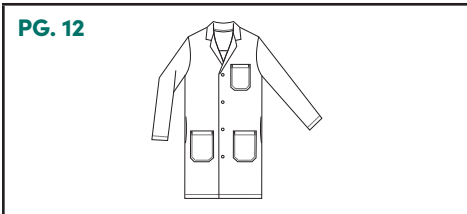
PG. 12

41" Knee Length Lab Coats

- Length based on size 40
- Button front
- Left chest pocket
- Two lower outside pockets
- Side slits for pocket access

32-50 (52-56 extra charge)
100% Sanforized Cotton Heavyweight Twill
White.....**420**

65% Polyester / 35% Cotton Heavyweight Twill
White.....**482**
65% Polyester / 35% Cotton Poplin
White.....**485**

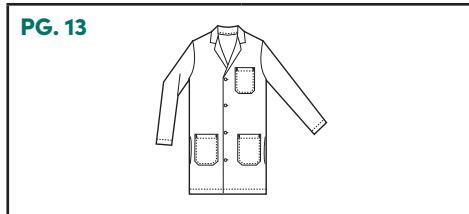


PG. 12

41" Snap Front Knee Length Lab Coat

- Length based on size medium
- Left chest pocket
- Two lower outside pockets
- Side slits for pocket access

XS-XL (2XL, 3XL extra charge)
65% Polyester / 35% Cotton Heavyweight Twill
White.....**471**



PG. 13

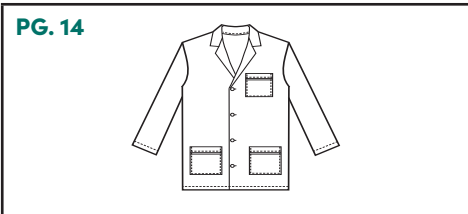
39" Staff Length Lab Coats

- Length based on size 40
- Button front
- Left chest pocket
- Two lower outside pockets
- Stitched down back belt
- Side slits for pocket access

32-50 (52-56 extra charge)
65% Polyester / 35% Cotton Fine Line Twill
White.....**499**

• Length based on size M • Left chest pocket
XS-XL (2XL, 3XL extra charge)
65% Polyester / 35% Cotton Fashion Fab Poplin
White.....**432**

• Left chest pocket with pencil stitch • Side slits for pocket access
XS-XL (2XL, 3XL extra charge)
80% Polyester / 20% Cotton Poplin
White.....**412**

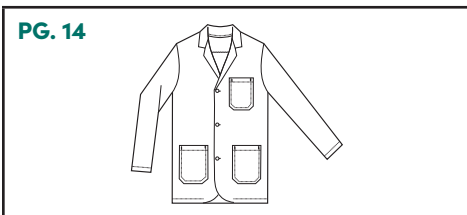


PG. 14

34" Short Lab Coat

- Length based on size 40
- Button front
- Left chest pocket with piping
- Two lower outside pockets with piping

32-50 (52-56 extra charge)
65% Polyester / 35% Cotton Fine Line Twill
White.....**447**

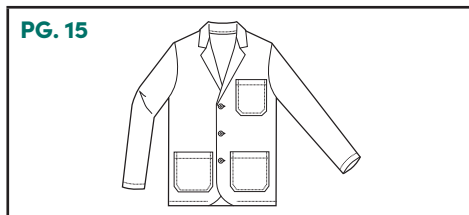


PG. 14

32" Extra Long Consultation Lab Jacket

- Length based on size medium
- Button front
- Left chest pocket
- Two lower outside pockets
- Two lower inside pockets
- Center back vent

M-XL (2XL, 3XL extra charge)
65% Polyester / 35% Cotton Heavyweight Twill
White.....**6284**

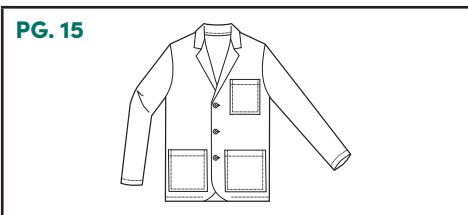


PG. 15

30" Consultation Lab Jacket

- Length based on size medium
- Button front
- Left chest pocket
- Two lower outside pockets
- Two lower inside pockets
- Center back vent

XS-XL (2XL, 3XL extra charge)
65% Polyester / 35% Cotton Poplin
White.....**175**

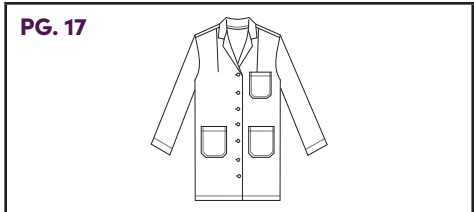


PG. 15

30" Consultation Lab Jacket

- Length based on size medium
- Button front
- Left chest outside pocket
- Left chest inside pocket
- Two lower oversized outside pockets
- Two lower oversized inside pockets
- Center back vent

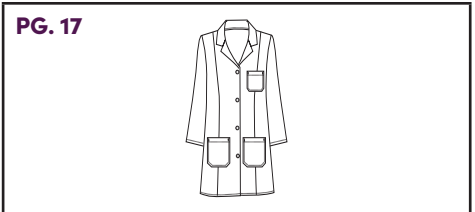
XS-XL (2XL, 3XL extra charge)
65% Polyester / 35% Cotton Heavyweight Twill
White.....**180**



41" Full Length Lab Coat

- Length based on size medium
- Button front
- Left chest pocket
- Two lower outside pockets
- Fitted back
- Two piece attached back belt with button closure

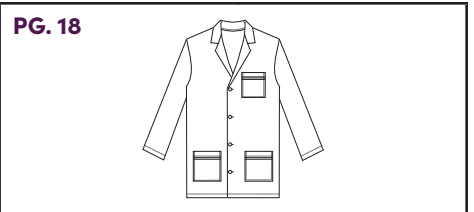
2XS-XL (2XL, 3XL extra charge)
65% Polyester / 35% Cotton Poplin
White.....**438**



39" Knot Button Traditional Lab Coat

- Length based on size medium
- Left chest pocket
- Two lower outside pockets
- Front and back princess seams
- Two piece attached back belt

XS-XL (2XL, 3XL extra charge)
100% Sanforized Cotton Heavyweight Twill
White.....**3301**



39" Traditional Length Lab Coats

- Length based on size 8
- Button front
- Left chest pocket
- Two lower outside pockets
- Two piece attached back belt with button closure

6-20, 42-46 (48-50 extra charge)
65% Polyester / 35% Cotton Poplin
White.....**477**
65% Polyester / 35% Cotton Heavyweight Twill
White.....**486**

2XS-XL (2XL, 3XL extra charge)
• Length based on size medium
• Stitched down back belt
80% Polyester / 20% Cotton Poplin
White.....**400**



35" Fashion Lab Coat

- Length based on size medium
- Button front
- Left chest pocket
- Two lower outside pockets
- Half-back belt
- Front and back princess seams

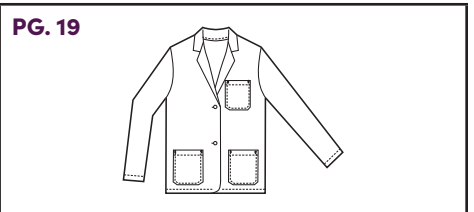
2XS-XL (2XL, 3XL extra charge)
65% Polyester / 35% Cotton Poplin
White.....**444**



34" Skimmer Length Lab Coat

- Length based on size medium
- Button front
- Left chest pocket
- Two lower outside pockets
- Stitched down back belt

2XS-XL (2XL, 3XL extra charge)
65% Polyester / 35% Cotton Fine Line Twill
White.....**436**



28" Consultation Lab Jacket

- Length based on size medium
- Button front
- Left chest pocket
- Two lower outside pockets
- Two inside pockets
- Fuller sleeves
- Center back vent

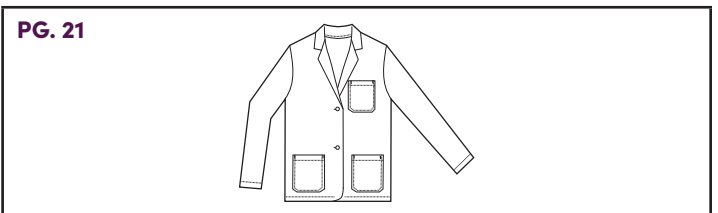
2XS-XL (2XL, 3XL extra charge)
65% Polyester / 35% Cotton Fine Line Twill
White.....**128**



30" Short Sleeve Lab Jacket

- Length based on size medium
- Button front
- Left chest pocket
- Two lower angled pockets
- Front darts
- Back darts with stitched down back belt

2XS-XL (2XL, 3XL extra charge)
65% Polyester / 35% Cotton Fine Line Twill
White.....**105**



28" Traditional Lab Jacket

- Length based on size medium
- Button front
- Left chest pocket
- Two lower outside pockets
- Fuller sleeves

2XS-XL (2XL, 3XL extra charge)
65% Polyester / 35% Cotton Fine Line Twill
White.....**125**

PG. 23



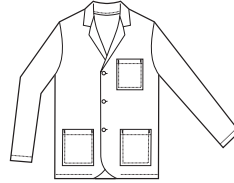
Women's Traditional Smocks

- Back yoke with box pleat
- 3/4 length sleeves
- Two lower pockets

XS-XL (2XL-4XL extra charge)
65% Polyester / 35% Cotton Poplin

Burgundy.....	61160
Royal.....	61010
White.....	61150

PG. 23



Unisex Counter Coats

- Button front
- Left chest pocket
- Two lower patch pockets

S-XL (2XL, 3XL extra charge)
65% Polyester / 35% Cotton Poplin

Navy.....	169
Royal.....	165

PG. 24



Unisex Zip Front Lab Shirts

- Left chest pocket
- Side vents
- Back yoke
- Stitched down back belt
- Two lower angled pants

S-XL (2XL, 3XL extra charge)
65% Polyester / 35% Cotton Poplin

Azure.....	193
White.....	190

PG. 25



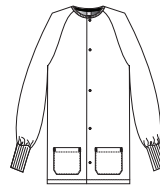
Unisex Zip Front Casual Shirts

- Two lower patch pockets

S-XL (2XL, 3XL extra charge)
65% Polyester / 35% Cotton Poplin

Burgundy.....	189
Navy.....	186
Royal.....	195

PG. 25



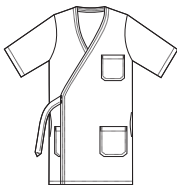
Unisex Warm-Ups

- Raglan sleeves
- Two lower pockets
- Scissor holder in right pocket
- Snap front closure
- Coordinating knit cuffs

XS-XL (2XL-5XL extra charge)
65% Polyester / 35% Cotton Poplin

Ciel Blue.....	7690
Navy.....	7696
White.....	7699

PG. 26



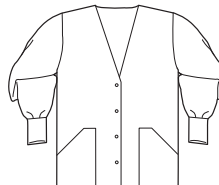
37" Unisex Reversible Closure Wrap

- Length based on size medium
- Three large patch pockets
- Bartacked belt
- Side slits for pocket access
- Three quarter length sleeves

S-XL (2XL, 3XL extra charge)
65% Polyester / 35% Cotton Poplin

Royal.....	3255
------------	-------------

PG. 27



Women's Cardigan

- Set-in sleeves
- Two lower pockets
- Scissor holder in right pocket
- Snap front closure
- Coordinating knit cuffs
- Center back half belt

XS-XL (2XL-4XL extra charge)
65% Polyester / 35% Cotton Poplin

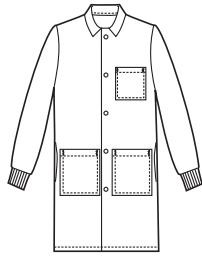
White.....	7364
------------	-------------



Style: **61010**
Page: **23**

Wearing
Size: **XS**

PG. 30



All Barrier Protective Coats

- Entire coat constructed of single-ply fluid-resistant barrier fabric
- Snap closure
- Left chest pocket
- Two lower pockets
- Side slits for pocket access
- Knit cuffs
- Style 6428 is PFAS-Free

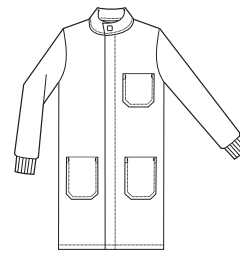
XS-XL (2XL, 3XL extra charge)

D-Stat® PLUS
White..... **6405**

D-Stat® PLUS with lighter weight Comfort Back
White..... **6410**

PFAS-Free Texture Shield D-Stat®
White..... **6428**

PG. 30



Protective Coats with Snap Closure at Neck

- Front and sleeves constructed of single-ply fluid-resistant barrier fabric
- Back constructed of Polyester / Cotton blend
- Concealed placket front with snap closure
- Throat-Guard collar with adjustable snap closure for improved neck protection
- Left chest pocket
- Two lower pockets
- Side slits for pocket access
- Back vent
- Knit cuffs
- PFAS-Free fabric
- Style 6432 has no pockets

XS-XL (2XL, 3XL extra charge)

PFAS-Free Texture Shield® (Front) - Polyester / Cotton Blend (Back)

Ciel Blue..... **6420**

Navy..... **6419**

White..... **6418***

*Style 6418 available up to 6XL (2XL-6XL extra charge)

PFAS-Free Texture Shield D-Stat® (Front) - Polyester / Cotton Blend (Back)

Ciel Blue..... **6426**

Navy..... **6425**

White..... **6427**

PFAS-Free Texture Shield® (Front) - Polyester / Cotton Blend (Back)

White..... **6432**

PG. 31



Protective Coats with "Hook & Loop" Closure at Neck

- Front and sleeves constructed of single-ply fluid-resistant barrier fabric
- Back constructed of Polyester / Cotton blend
- Concealed placket front with snap closure
- Throat-Guard collar with "hook and loop" closure for improved neck protection
- Two lower pockets
- Back vent
- Knit cuffs
- PFAS-Free fabric

XS-XL (2XL, 3XL extra charge)

PFAS-Free Fashion Shield® (Front) - Polyester / Cotton Blend (Back)

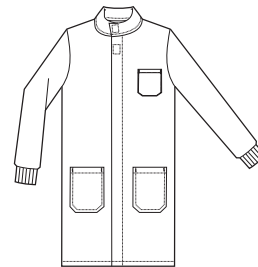
Ciel Blue..... **6431**

White..... **6430**

PFAS-Free Texture Shield D-Stat® (Entire Garment)

White..... **6429**

PG. 31



Protective Coats with "Hook & Loop" Closure at Neck

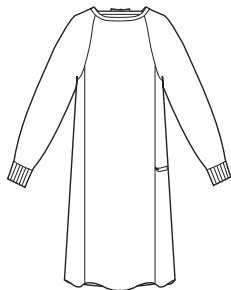
- Front and sleeves constructed of single-ply fluid-resistant barrier fabric
- Back constructed of Polyester / Cotton blend
- Concealed placket front with snap closure
- Throat-Guard collar with "hook and loop" closure for improved neck protection
- Left chest pocket
- Two lower pockets
- Back vent
- Knit cuffs
- Chest pocket
- PFAS-Free fabric

XS-XL (2XL, 3XL extra charge)

PFAS-Free Texture Shield® (Front) - Polyester / Cotton Blend (Back)

White..... **6422**

PG. 32



Barrier-Front Precaution Gowns

- Front and sleeves constructed of single-ply fluid-resistant barrier fabric
- Back constructed of yellow Polyester / Cotton blend fabric
- Two sets of tie closures (one at back of neck, one at waist)
- Style 535 is PFAS-Free

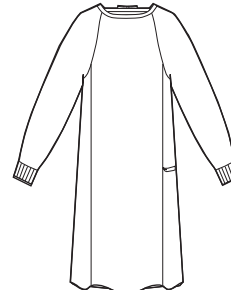
L
PFAS-Free Fashion Shield®
 • 42 ½" length
 • 55 ½" sweep
 • White knit cuffs

Yellow..... **535**

L
Texture Shield®
 • 48 ½" length
 • 60 ½" sweep
 • Coordinating color knit cuffs

Blue Mist..... **504**

PG. 32



All-Barrier Precaution Gowns

- Entire garment constructed of single-ply fluid-resistant barrier fabric
- Two sets of tie closures (one at back of neck, one at waist)
- White knit cuffs
- PFAS-Free Fabric

One Size Fits Most
PFAS-Free Fashion Shield®
 • 44" length
 • 57" sweep

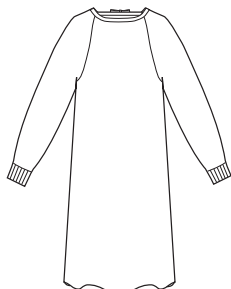
Yellow..... **511***

PFAS-Free Fashion Shield D-Stat®
 • 44" length
 • 57" sweep

Yellow..... **512***

* Also available size 3XL (extra charge)

PG. 33



Protective Apron Gowns

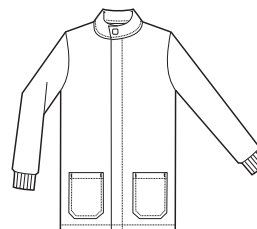
- Entire garment constructed of single-ply fluid-resistant barrier fabric
- Backless design adds to the comfort in non-climate controlled areas (i.e. soiled linen and decontamination)
- Two sets of tie closures (one at the back of the neck and one at waist)
- Styles 529 and 526 are PFAS-Free

L-XL
PFAS-Free Fashion Shield®
 Ciel Blue (white knit cuffs)..... **529**

Texture Shield®
 Blue Mist (elasticized wrists)..... **584**

PFAS-Free Texture Shield D-Stat®
 Ciel Blue (ciel blue knit cuffs)..... **526**

PG. 33



Protective Short Coats

- Front and sleeves constructed of single-ply fluid-resistant barrier fabric
- Back constructed of Polyester / Cotton blend fabric
- Concealed placket front with snap closure
- Throat-Guard collar with adjustable snap closure for improved neck protection
- Two lower pockets
- Knit cuffs
- PFAS-Free Fabric

XS-XL (2XL, 3XL extra charge)
PFAS-Free Texture Shield® (Front) - Polyester / Cotton Blend (Back)
 Ciel Blue..... **6424**
 White..... **6423**

EMBROIDERY

MONOGRAMMING, EMBLEMS & SCREEN PRINTING

SIZE

Pricing varies with size and character style	BLOCK	Script
3/8" or 1/2" per line (Max 20 characters)	8229887	8229884
5/8", 3/4" or 1" per letter	8229892	8229891
1 1/2" or 2" per letter	8229894	
2 1/2" or 3" per letter	8229896	

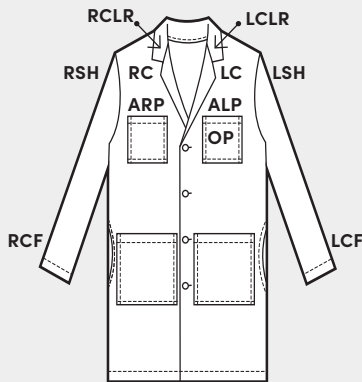
CHARACTER STYLE

ALL CAPS, CAPS AND LOWER CASE OR ALL LOWER CASE:

BCAP BLOCK, all CAPS	SCAP <i>SCRIPT</i> , all CAPS
BMIX Block, CAP and lower case	SMIX <i>Script</i> , CAP and lower case
BLC block, lower case	SLC <i>script</i> , lower case

PLACEMENT

LC Left Chest	RSH Right Sleeve High
RC Right Chest	RCF Right Cuff
OP On Pocket	RSC Right Sleeve Cuff
ARP Above Right Pocket	LSH Left Sleeve High
ALP Above Left Pocket	LCF Left Cuff
LCLR Left Collar	LSC Left Sleeve Cuff
RCLR Right Collar	



50081 White	50382 Harvest Gold	50086 Medium Brown	50745 Deep Orange	50562 Wildfire	50536 Pearl Violet	50548 Purple Twist	50556 Teal	50684 Cypress #2
50563 Natural	50019 Royal Gold	50633 Light Brown	50527 Flamingo	50477 Raspberry	50470 Silver Frost	50539 True Royal	50553 Dark Teal	50552 Ginger
50632 Meringue	50542 Yellow/Orange	50579 Date	50167 Melonade	50637 Country Red	50445 Cloud	50036 Blueberry	50628 Aqua Velva	50336 Spring Garden
50575 White Wash	50360 Nectar	50394 Terra Cotta	50128 Memphis Bell	50147 Carolina Red	50543 Smoke	50227 Empire Blue	50541 Bahama Green	50683 Olive
50625 Buttercream	50027 Marigold	50520 Pecan	50636 Fleshtone	50578 Sangria	50572 Light Carbon	50032 Blue Bird	50693 Mallard Blue #2	50324 Holly
50537 Warm Sand	50501 Mango Gold	50577 Burly Brown	50112 Dusky Rose	50546 Dark Strawberry	50631 Silver	50033 Chow Blue	50270 M.D. Green	50528 Dark Fir
50571 Oyster Shell	50521 Butter	50681 Coffee Bean #2	50529 Shrimp	50620 Red Wine	50448 Silvery Grey	50058 Bright Blue	50567 Turquoise Green	50308 Grass Green
50678 Beige	50533 Sunburst	50557 Toasted Almond	50549 Hot Pink	50465 Maroon	50435 Grayrod	50638 Alexis Blue	50278 Fern Green	50300 Emerald #2
50570 New Gold	50532 Yellow	50635 Nutmeg	50137 Cherry Blossom	50627 Intense Maroon	50436 Pewter	50186 Pacific Blue	50623 Sea Frost	50561 Emerald
50386 Penny	50565 Orange Poppy	50634 Harvest	50020 Spanish Red	50624 Brush Burgundy	50544 Chrome	50530 California Blue	50554 Spearmint	50513 Irish Green
50050 Pale Yellow	50695 Copper #2	50621 Spice	50547 Ruby Glint	50626 Eggplant	50457 Charcoal	50184 Aquamarine	50551 Isle Green	50534 Evergreen
50362 Canary	50076 Old Gold	50377 Rust	50133 Crimson	50583 Purple	50456 Aged Charcoal	50034 Indian Sky	50317 Tamarack	50576 Meadow Green
50087 Daffodil	50555 Gold	50079 Orange	50599 Holly Red	50654 Easter Purple	50064 Black	50220 Oriental Blue	50568 Apple Green	50545 Holly Green
50607 Yellow Bird	50378 Copper	50370 Paprika	50059 Maraschino	50246 Port Wine	50068 Yale Blue	50569 Blue Dawn	50320 Sage	50694 M.D. Green #2
50351 Star Gold	50558 Carmel Cream	50682 Tangerine	50070 Red	50540 Plum	50535 Light Midnight	50519 Soft Blue	50013 Mint Tint	50629 Neon Green
50566 Visor Gold	50550 Tan	50559 Orange Sun	50538 Persimmon	50560 Sugar Plum	50507 Classic Navy	50210 Pastel Blue	50615 Tranquil Green	51001 Metallic Silver
50061 Sunflower Gold	50518 Dark Tan	50564 Saffron	50141 Foxy Red	50048 Cachet	50085 Dark Navy	50531 Turquoise	50639 Lime	51000 Metallic Gold

Specify thread color from the color chart above for basic letter embroidery. For custom embroidery including special fonts and/or artwork elements, please refer to the guidelines below.

ARTWORK: Preferred artwork format is vector .eps. We also accept high-resolution .jpg or .pdf. To preserve the integrity of your logo, low-resolution .jpg or .pdf are not recommended.

COLORS: Provide Pantone® colors and we will closely match them to one of our 153 in-stock thread colors. Include up to nine colors of thread!

REQUIREMENTS: Lettering must be 1/4" or greater to be legible. Maximum logo design should not exceed 10" x 10". Any changes to an approved logo may incur additional charges. Digitizing fees are based on stitch count and colors.

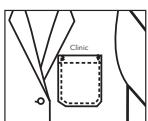
EMBLEMS: We supply woven, rubber and vinyl emblems. Please provide camera-ready art work with information detailing the emblem design, quantity, colors, and emblem placement.

SCREEN PRINTING: Screen printing can be produced in one to six colors. We work with camera-ready artwork, or produce custom designs at minimal charge.

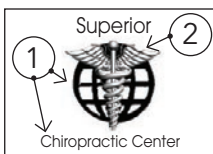
KAUMOGRAPHs: Are a heat transfer application. Minimums required, please contact your Customer Care Representative for more information.

SAMPLE ORDER

Letter Size	Type	Style	Placement	Thread Color
3/8"	8229887	BMIX	ALP	* Black



3/8" letter size block type capital & lower case letters placed over the left chest pocket in black thread



SCREEN PRINTING EXAMPLE



KAUMOGRAPH EXAMPLE

THE PERFECT FIT

HOW TO MEASURE

BUST/CHEST: With arms at your sides, measure around your upper body, under your armpits and over the fullest part of your chest and shoulder blades.

WAIST: Measure around your waist. The waist measurement should be taken from the Natural Waist which is the point where you bend side to side. Measure at this point, keeping the tape comfortably loose around your waist.

HIPS: Stand with your heels together and measure around the fullest part of your hips. Approximately 8" below your waist.

WOMEN'S MEASURING GUIDE



BUST/CHEST

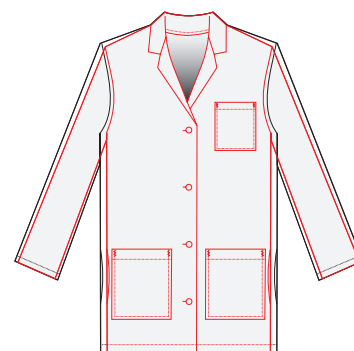
WAIST

HIPS

MEN'S MEASURING GUIDE



MODERN FIT vs CLASSIC FIT



MODERN FIT
CLASSIC FIT

Compared to the Classic Fit, Modern Fit is:

- Slimmer in the body
- Narrower in the shoulders
- More of a natural shoulder slope
- Slightly smaller armholes

SIZE AND CONVERSION CHARTS

The following charts may be used as a guide for determining the correct size to order for styles shown throughout this catalog. Locate the correct size chart and order the size listed, based on your equivalent numeric size. Men's numeric sizes are chest measurements, and Women's are dress sizes.

Unisex & Men's Fit	2XS	XS	S	M	L	XL	2XL	3XL	4XL	5XL
Women's Jacket Size	2-4	6-8	10-12	14-16	18-20	22-24	26-28	30-32	34-36	38-40
Men's Jacket Size	26-28	30-32	34-36	38-40	42-44	46-48	50-52	54-56	58-60	62-64

Women's Fit	2XS	XS	S	M	L	XL	2XL	3XL	4XL
Jacket or Dress Size	0	2 4	6 8	10 12	14 16	18 20	22/42 24/44	26/46 28/48	30/50 32/52
Bust Size	30-31	31-32 32-33	33-34 34-35	35-36 36-37	38-39 39-40	40-42 42-44	44-46 46-48	48-50 50-52	52-54 54-56
Waist Size	21-22	22-23 23-24	24-25 25-26	26-27 27-28	29-30 30-31	32-33 34-35	36-37 38-39	40-41 42-43	44-45 46-47
Hip Size	32-33	33-34 34-35	35-36 36-37	37-38 38-39	41-42 42-44	44-46 46-48	48-50 50-52	52-54 54-56	56-58

Embroidery shown on garments throughout the catalog are for illustration only.

All illustrations and specifications contained herein are for illustrative purposes only and are based on the latest product information available at the time of printing. We reserve the right to make changes in color, prints, materials, blends of fabrics and specifications at any time. Styles may be discontinued without notice. Your local Sales Representative is always available to you for updates on all product offerings.

STYLE CHART



Style: **477**
Page: **18**

Wearing
Size: **S**

LENGTH	DESCRIPTION	100% SANFORIZED COTTON HEAVYWEIGHT TWILL			65/35% COTTON HEAVYWEIGHT TWILL			65/35% COTTON FINE LINE TWILL		
		UNISEX	M	W	UNISEX	M	W	UNISEX	M	W
45"	Men's Extra Long Lab Coat					•				
	Men's Extra Long Lab Coat								•	
41"	Unisex Consultation Lab Coat							•		
	Unisex Lab Coat									
	Unisex Lab Coat									
	Unisex Lab Coat	•								
	Unisex Lab Coat									
	Unisex Snap Front Lab Coat									
	Unisex Knot Button Lab Coat	•								
	Unisex Snap Front Lab Coat									
	Unisex Azure Lab Coat									
	Unisex Navy Lab Coat									
	Men's Knee Length Lab Coat									
	Men's Knee Length Lab Coat						•			
	Men's Snap Front Knee Length Lab Coat						•			
	Men's Knee Length Lab Coat									
	Men's Knee Length Lab Coat		•							
Men's Knee Length Lab Coat		•								
Women's Full Length Lab Coat										
39"	Men's Staff Length Lab Coat									
	Men's Staff Length Lab Coat								•	
	Men's Staff Length Lab Coat									
	Women's Traditional Length Lab Coat									
	Women's Traditional Length Lab Coat							•		
	Women's Traditional Length Lab Coat									
	Women's Knot Button Traditional Length Lab Coat			•						
35"	Women's Fashion Lab Coat									
34"	Unisex Short Sleeve Lab Coat									
	Men's Short Lab Coat								•	
32"	Women's Skimmer Length Lab Coat									•
	Men's Extra Long Consultation Lab Jacket						•			
30"	Unisex Consultation Lab Jacket							•		
	Men's Consultation Lab Jacket						•			
	Men's Consultation Lab Jacket									
	Women's Short Sleeve Lab Jacket									•
28"	Women's Consultation Lab Jacket									•
	Women's Traditional Lab Jacket									•

65/35% COTTON POPLIN			80/20% COTTON POPLIN			CLOSURE			POCKETS			KNIT CUFFS	FEATURES			PAGE	STYLE #
UNISEX	M	W	UNISEX	M	W	SNAP	BUTTON	KNOT	CHEST	LOWER	INSIDE		BACK	SIDE SLITS	SPECIAL FEATURE		
							•		1	2	0			•	1½" Longer Sleeves	11	6480
							•		1	2	0		Stitched Down	•	1½" Longer Sleeves	11	6499
							•		2	4	2			•	Oversized Double Pockets	6	1475
•							•		1	2	0			•	Oversized Pockets	5	3495
			•				•		1	2	0			•	Oversized Pockets	5	3492
							•		1	2	0			•	Oversized Pockets	5	415
			•				•		1	2	0	•		•	Convertible Collar	7	3420
			•				•		1	2	0	•		•	Convertible Collar	6	439
								•	1	2	0		2 Piece Attached			8	437
			•				•		0	0	0	•			Convertible Collar	7	3419
•							•		1	2	0			•	Azure	8	430
•							•		1	2	0			•	Navy	8	431
	•						•		1	2	0			•		12	485
							•		1	2	0			•		12	482
							•		1	2	0			•		12	471
				•			•		1	2	0		Stitched Down	•		11	433
							•		1	2	0			•		12	420
								•	1	2	0		2 Piece Attached	•		11	423
		•					•		1	2	0		2 Piece Attached		Fitted Back	17	438
	•						•		1	2	0					13	432
							•		1	2	0		Stitched Down	•		13	499
				•			•		1	2	0			•	Pencil Stitch Pocket	13	412
		•					•		1	2	0		2 Piece Attached			18	477
							•		1	2	0		2 Piece Attached			18	486
					•		•		1	2	0		Stitched Down			18	400
								•	1	2	0		2 Piece Attached		Modern Fit-Front & Back Princess Seams	17	3301
		•					•		1	2	0		1/2 Back Belt		Front & Back Princess Seams	18	444
•							•		1	2	0				Short Sleeve	9	3409
							•		1	2	0				Pockets Have Piping	14	447
							•		1	2	0		Stitched Down			19	436
							•		1	2	2		Center Vent			14	6284
							•		1	4	2				Oversized Pockets - Pencil Stitch	9	419
							•		1	2	3				Oversized Pockets	15	180
	•						•		1	2	2		Center Vent			15	175
							•		1	2	0		Stitched Down		Front & Back Darts	20	105
							•		1	2	2		Center Vent		Fuller Sleeves	19	128
							•		1	2	0				Fuller Sleeves	21	125

WHERE WILL IT FALL?

Our labcoats are designed with form and function in mind. Choosing the right coat for your body-type will ensure a proper fit and maximum comfort. We offer our coats in lengths 28" to 45", which should be measured from the back of the collar seam to the desired hem length. Please refer to the Quick Guide below to select the length that best matches your desired style.

FEMALE HEIGHT: 5'10"
STYLE: 444
SIZE: XS

MALE HEIGHT: 6'1"
STYLE: 6480
SIZE: L





How to Order

Our Customer Care representatives are eager to assist you Monday through Friday from 8:00am to 8:00pm Eastern Standard Time. Placing an order by phone is quick and easy. Our representatives can help you place an order, check the status of an order, customize apparel or answer any questions you may have concerning any of our products.

Phone: 1-888-491-5818
(800) 727-8643

Fax: (727) 397-9667

Mail: 10055 Seminole Blvd.
Seminole, FL 33772-2539

Email: info@FashionSealHealthcare.com

Direct to OE: ocorrespondence@superioruniformgroup.com

Return Policy

If you are not fully satisfied, notify us of your desire to return any stock items within 30 days of receipt of merchandise. A "Return Goods Authorization" (RGA) will be sent to you promptly. After our receipt of the returned merchandise, a credit of the purchase price will be made for styles returned in accordance with the RGA instructions unless such styles have been worn, laundered, dry cleaned, altered, abused, embroidered, emblem added, marked or specially made per buyer's instructions. Returns will not be accepted by our distribution center without an RGA.

Please follow all instructions as outlined in the RGA. Make sure all packages are marked with the RGA number and returned to the proper distribution warehouse. We recommend that you ship via a method that ensures your return can be tracked and keep a record of your RGA.

INDEX

UNISEX COATS 5 - 9

415	41" LAB COAT 100% Sanforized Cotton Heavyweight Twill	5
3495	41" LAB COAT 65% Polyester / 35% Cotton Poplin	5
3492	41" LAB COAT 80% Polyester / 20% Cotton Poplin	5
1475	41" CONSULTATION LAB COAT 65% Polyester / 35% Cotton Fine Line Twill	6
439	41" SNAP FRONT LAB COAT 80% Polyester / 20% Cotton Poplin	6
3420	41" LAB COAT 80% Polyester / 20% Cotton Poplin	7
3419	41" SNAP FRONT LAB COAT 80% Polyester / 20% Cotton Poplin	7
430	41" UNISEX LAB COAT 65% Polyester / 35% Cotton Poplin	AZURE 8
431	41" UNISEX LAB COAT 65% Polyester / 35% Cotton Poplin	NAVY 8
437	41" KNOT BUTTON LAB COAT 100% Sanforized Cotton Heavyweight Twill	8
3409	34" SHORT SLEEVE LAB COAT 65% Polyester / 35% Cotton Poplin	9
419	30" CONSULTATION LAB JACKET 65% Polyester / 35% Cotton Fine Line Twill	9

MEN'S COATS 11 - 15

6480	45" EXTRA LONG LAB COAT 65% Polyester / 35% Cotton Heavyweight Twill	11
6499	45" EXTRA LONG LAB COAT 65% Polyester / 35% Cotton Fine Line Twill	11
423	41" KNEE LENGTH LAB COAT 100% Sanforized Cotton Heavyweight Twill	11
433	41" KNEE LENGTH LAB COAT 80% Polyester / 20% Cotton Poplin	11
420	41" KNEE LENGTH LAB COAT 100% Sanforized Cotton Heavyweight Twill	12
482	41" KNEE LENGTH LAB COAT 65% Polyester / 35% Cotton Heavyweight Twill	12
485	41" KNEE LENGTH LAB COAT 65% Polyester / 35% Cotton Poplin	12
471	41" SNAP FRONT KNEE LENGTH LAB COAT 65% Polyester / 35% Cotton Heavyweight Twill	12

499	39" STAFF LENGTH LAB COAT 65% Polyester / 35% Cotton Fine Line Twill	13
432	39" STAFF LENGTH LAB COAT 65% Polyester / 35% Cotton Fashion Fab Poplin	13
412	39" STAFF LENGTH LAB COAT 80% Polyester / 20% Cotton Poplin	13
447	34" SHORT LAB COAT 65% Polyester / 35% Cotton Fine Line Twill	14
6284	32" EXTRA LONG CONSULTATION LAB JACKET 65% Polyester / 35% Cotton Heavyweight Twill	14
175	30" CONSULTATION LAB JACKET 65% Polyester / 35% Cotton Poplin	15
180	30" CONSULTATION LAB JACKET 65% Polyester / 35% Cotton Heavyweight Twill	15

WOMEN'S COATS 17 - 21

438	41" FULL LENGTH LAB COAT 65% Polyester / 35% Cotton Poplin	17
3301	39" KNOT BUTTON TRADITIONAL LENGTH LAB COAT 100% Sanforized Cotton Heavyweight Twill	17
477	39" TRADITIONAL LENGTH LAB COAT 65% Polyester / 35% Cotton Poplin	18
486	39" TRADITIONAL LENGTH LAB COAT 65% Polyester / 35% Cotton Heavyweight Twill	18
400	39" TRADITIONAL LENGTH LAB COAT 80% Polyester / 20% Cotton Poplin	18
444	35" FASHION LAB COAT 65% Polyester / 35% Cotton Poplin	18
436	34" SKIMMER LENGTH LAB COAT 65% Polyester / 35% Cotton Fine Line Twill	19
128	28" CONSULTATION LAB JACKET 65% Polyester / 35% Cotton Fine Line Twill	19
105	30" SHORT SLEEVE LAB JACKET 65% Polyester / 35% Cotton Fine Line Twill	20
125	28" TRADITIONAL LAB JACKET 65% Polyester / 35% Cotton Fine Line Twill	21

COATS, SMOCKS, WARM-UPS, SHIRTS & WRAPS 23 - 27

61160	WOMEN'S TRADITIONAL SMOCK 65% Polyester / 35% Cotton Poplin	BURGUNDY 23
61010	WOMEN'S TRADITIONAL SMOCK 65% Polyester / 35% Cotton Poplin	ROYAL 23

61150	WOMEN'S TRADITIONAL SMOCK 65% Polyester / 35% Cotton Poplin	WHITE	23	6418	UNISEX PROTECTIVE COATS WITH SNAP CLOSURE AT NECK PFAS-Free Texture Shield® (Front) Polyester / Cotton Blend (Back)	WHITE	30
169	UNISEX COUNTER COAT 65% Polyester / 35% Cotton Poplin	NAVY	23	6426	UNISEX PROTECTIVE COATS WITH SNAP CLOSURE AT NECK PFAS-Free Texture Shield D-Stat® (Front) Polyester / Cotton Blend (Back)	CIEL BLUE	30
165	UNISEX COUNTER COAT 65% Polyester / 35% Cotton Poplin	ROYAL	23	6425	UNISEX PROTECTIVE COATS WITH SNAP CLOSURE AT NECK PFAS-Free Texture Shield D-Stat® (Front) Polyester / Cotton Blend (Back)	NAVY	30
193	UNISEX ZIP FRONT LAB SHIRT 65% Polyester / 35% Cotton Poplin	AZURE	24	6427	UNISEX PROTECTIVE COATS WITH SNAP CLOSURE AT NECK PFAS-Free Texture Shield D-Stat® (Front) Polyester / Cotton Blend (Back)	WHITE	30
190	UNISEX ZIP FRONT LAB SHIRT 65% Polyester / 35% Cotton Poplin	WHITE	24	6432	UNISEX PROTECTIVE COATS WITH SNAP CLOSURE AT NECK PFAS-Free Texture Shield® (Front) Polyester / Cotton Blend (Back)	WHITE	30
189	UNISEX ZIP FRONT CASUAL SHIRT 65% Polyester / 35% Cotton Poplin	BURGUNDY	25	6431	UNISEX PROTECTIVE COATS WITH "HOOK & LOOP" CLOSURE AT NECK PFAS-Free Fashion Shield® (Front) Polyester / Cotton Blend (Back)	CIEL BLUE	31
186	UNISEX ZIP FRONT CASUAL SHIRT 65% Polyester / 35% Cotton Poplin	NAVY	25	6430	UNISEX PROTECTIVE COATS WITH "HOOK & LOOP" CLOSURE AT NECK PFAS-Free Fashion Shield® (Front) Polyester / Cotton Blend (Back)	WHITE	31
195	UNISEX ZIP FRONT CASUAL SHIRT 65% Polyester / 35% Cotton Poplin	ROYAL	25	6429	UNISEX PROTECTIVE COATS WITH "HOOK & LOOP" CLOSURE AT NECK PFAS-Free Texture Shield D-Stat® (Entire Garment)	WHITE	31
7690	UNISEX WARM-UP 65% Polyester / 35% Cotton Poplin	CIEL BLUE	25	6422	UNISEX PROTECTIVE COATS WITH "HOOK & LOOP" CLOSURE AT NECK PFAS-Free Texture Shield® (Front) Polyester / Cotton Blend (Back)	WHITE	31
7696	UNISEX WARM-UP 65% Polyester / 35% Cotton Poplin	NAVY	25	535	BARRIER-FRONT PRECAUTION GOWN PFAS-Free Fashion Shield®	YELLOW	32
7699	UNISEX WARM-UP 65% Polyester / 35% Cotton Poplin	WHITE	25	504	BARRIER-FRONT PRECAUTION GOWN Texture Shield®	BLUE MIST	32
3255	37" UNISEX REVERSIBLE CLOSURE WRAP 65% Polyester / 35% Cotton Fine Line Twill	ROYAL	26	511	ALL-BARRIER PRECAUTION GOWN PFAS-Free Fashion Shield®	YELLOW	32
7364	WOMEN'S CARDIGAN 65% Polyester / 35% Cotton Poplin	WHITE	27	512	ALL-BARRIER PRECAUTION GOWN PFAS-Free Fashion Shield D-Stat®	YELLOW	32
REUSABLE PROTECTIVE APPAREL 30 - 33				529	UNISEX PROTECTIVE APRON GOWN PFAS-Free Fashion Shield® (white knit cuffs)	CIEL BLUE	33
6405	UNISEX ALL BARRIER PROTECTIVE COAT D-Stat® PLUS	WHITE	30	584	UNISEX PROTECTIVE APRON GOWN Texture Shield® (elasticized wrists)	BLUE MIST	33
6428	UNISEX ALL BARRIER PROTECTIVE COAT PFAS-Free Texture Shield D-Stat®	WHITE	30	526	UNISEX PROTECTIVE APRON GOWN PFAS-Free Texture Shield D-Stat® (ciel blue knit cuffs)	CIEL BLUE	33
6410	UNISEX ALL BARRIER PROTECTIVE COAT D-Stat® PLUS with lighter weight Comfort Back	WHITE	30	6424	UNISEX PROTECTIVE SHORT COAT PFAS-Free Texture Shield® (Front) Polyester / Cotton Blend (Back)	CIEL BLUE	33
6420	UNISEX PROTECTIVE COATS WITH SNAP CLOSURE AT NECK PFAS-Free Texture Shield® (Front) Polyester / Cotton Blend (Back)	CIEL BLUE	30	6423	UNISEX PROTECTIVE SHORT COAT PFAS-Free Texture Shield® (Front) Polyester / Cotton Blend (Back)	WHITE	33
6419	UNISEX PROTECTIVE COATS WITH SNAP CLOSURE AT NECK PFAS-Free Texture Shield® (Front) Polyester / Cotton Blend (Back)	NAVY	30				



Catalog 410

10055 Seminole Blvd.
Seminole, FL 33772
888-491-5818

www.fashionsealhealthcare.com

www.linkedin.com/showcase/fashion-seal-healthcare

SAP# 600174