



CONTENTS

VISIBILITY APPAREL CATALOG

ONLINE AT

REDKAP.COM

Whether running heavy equipment on a construction site or repairing a pot hole on a federal highway, thousands of workers are exposed to potentially harmful working conditions every day. It is essential that these workers can always be seen to avoid serious or fatal injuries on the job. Red Kap® offers a variety of visibility apparel products, which meet American National Standards Institute (ANSI) standards, making workers not only safe, but compliant.





TABLE OF
CONTENTS

- 4** Icon Guide
- 5** Glossary
- 6** ANSI Standard
- 8** ANSI Classifications
- 10** ANSI Product Guide
- 12** Hi-Visibility Apparel
- 28** Enhanced
Visibility Apparel
- 36** Customization
- 42** Size Charts
- 43** Index





ICON GUIDE

Use the icon legend below as a guide to help quickly identify unique features and benefits for Red Kap® garments shown above most product names.



TOUCHTEX™ TECHNOLOGY

Superior color retention, soil release and wickability.



TOUCHTEX PRO™

Same features as Touchtex™ but with an even softer hand. Available on bottoms only.



DURABLE PRESS

Minimum pressing or ironing required. Fabric contains a wrinkle-resistant finish.



RIPSTOP FABRIC

Lightweight yet extra durable ripstop fabric keeps rips and repairs to a minimum.



MIMIX™

Thanks to a patented, science-based MIMIX™ design, Red Kap® products with MIMIX™ offer increased mobility and breathability for all-day comfort.



OILBLOK TECHNOLOGY

Repels oil and oil-based fluids keeping garments looking new, longer – and it's only available from Red Kap®.



DURABLE WATER REPELLENT (DWR) FINISH

Repels water and water-based liquids while decreasing dry time nearly 30% compared to other non-treated twill workwear fabric.



ZEROSKRATCH™ APPAREL

Paint jobs and surfaces stay scratch free thanks to strategically-designed garment features that keep buttons and snaps under wraps.



SAFE-CINCH™

Drawstrings are tucked away in front pockets, eliminating safety hazards and offering a neater appearance and easier laundering.



RELAXED FIT

Our relaxed fit jeans feature a traditional rise that sits at the natural waist. Relaxed seat and thigh offer more room for mobility, and the slightly tapered leg fits over work boots.

HI-VISIBILITY CLASS DESCRIPTIONS



HI-VISIBILITY - TYPE O, CLASS 1

Intended for use in environments where there are struck-by hazards from moving vehicles, equipment and machinery not operating on public access rights of way or temporary traffic control zones.



HI-VISIBILITY TYPE R CLASS 2

Intended for use by personnel exposed to vehicular traffic from public access rights of way or roadway temporary traffic control zones. Class 2 garments require the use of greater amounts of high-visibility materials which help distinguish between a human and an inanimate object.



HI-VISIBILITY TYPE R CLASS 3

Intended for use by personnel exposed to vehicular traffic from public access rights of way or roadway temporary traffic control zones. Class 3 garments mandate an even higher standard of visibility for workers in moving, complex backgrounds.



HI-VISIBILITY SUPPLEMENTAL CLASS E

Pants, bib overalls, shorts and gaiters meeting minimum area requirements for background material and retroreflective trim. Class E apparel, however, cannot be worn alone to provide adequate visibility of workers. When Class E items are worn with Performance Class 2 or 3 apparel, the overall classification of the ensemble is Performance Class 3.



UPF 40 RATING

Ultraviolet Protection Factor – A rating designed for fabric and clothing that specifically measures the level of sun protection. UPF measures both UVA and UVB rays.

GLOSSARY OF TERMS AND DEFINITIONS



HIGH VISIBILITY SAFETY APPAREL (HVSA) – Personal protective safety clothing intended to provide visibility during daytime, nighttime and other low-light conditions and meets the requirements of Performance Class 1, 2 or 3 as defined by ANSI/ISEA 107 (High Visibility Safety Apparel and Accessories).

ENHANCED VISIBILITY APPAREL – Garments designed to improve wearer’s visibility but do not meet the requirements specified in ANSI/ISEA 107 because they are made of materials that do not meet the performance requirements or they do not have retro-reflective striping for nighttime visibility.

PERFORMANCE CLASS – A category of performance defined by the minimum area of background fabric and retro-reflective striping. Design specifications for each performance class correspond with the needs of the user in the expected risk environment.

BACKGROUND MATERIAL* – Colored fluorescent material intended to be highly conspicuous, but not intended to comply with the requirements of ANSI 107 standard for retro-reflective material.

RETRO-REFLECTIVE MATERIAL* – Material that reflects and returns a relatively high proportion of light in a direction close to the direction from which it came.

COMPLIANCE – Garments and materials (background fabric, combined performance material and retro-reflective trim) shown to meet the requirements of ANSI/ISEA 107.

CERTIFICATION (FINISHED ITEM) – Documentation from either a 3rd party certifier or the garment manufacturer demonstrating compliance with performance requirements set forth in ANSI/ISEA 107. Manufacturers choosing self-certification must use the Declaration of Conformity provided in the standard.

INTRODUCTION TO THE ANSI/ISEA 107 HI-VISIBILITY STANDARD

The American National Standard for High-Visibility Safety Apparel and Accessories (ANSI/ISEA 107) is a standard established by the American National Standards Institute. Construction, maintenance, utility, emergency responders, airport ramp personnel and many categories of off-road workers are routinely exposed to potential injury hazards from low visibility while on the job.

This standard provides guidelines for the selection and use of high-visibility safety apparel and other high-visibility accessories to improve worker visibility during the day, in low-light conditions, and at night.

Private companies, as well as various federal, state, and local authorities have embraced ANSI/

ISEA 107-compliant garments and accessories as useful PPE (Personal Protective Equipment) for workers exposed to struck-by hazards.

ANSI/ISEA 107 SPECIFIES THE FOLLOWING CRITERIA MUST BE MET:

- Performance requirements for background material, combined-performance, and retro-reflective materials
- Photometric and physical performance requirements for retro-reflective and combined-performance materials
- Garment design
- Proper labeling

FINAL RULE

The Final Rule, 23 CFR Part 634 Worker Visibility, was passed on November 18, 2006, and took effect on November 24, 2008.

The Rule states that all workers within a right-of-way of a Federal-aid highway who are exposed to traffic or to construction equipment within the work area shall wear High-Visibility apparel that must meet Performance Class 2 or Class 3 requirements of ANSI/ISEA 107.

The Federal Register Final Rule and revised document of the 2009 Manual on Uniform Traffic Control Devices (MUTCD) was released on December 16, 2009.

The Rule states that mandatory use areas are expanded beyond Federal-aid highways and will require all workers on or near the roadway right-of-way to wear high visibility safety apparel that meets Performance Class 2 or 3 of ANSI 107-2004 or equivalent revisions. The Federal Highway Administration has issued a formal interpretation recognizing the 2015 edition and equivalent revisions of ANSI/ISEA 107 as meeting the requirements of 2009 MUTCD.

ULTRAVIOLET PROTECTION FACTOR (UPF) RATING

A relatively new rating designation for sun protective textiles and clothing is UPF (Ultraviolet Protection Factor). Unlike SPF (Sun Protection Factor) that measures only UVB, UPF measures both UVA and UVB.

Sun protective clothing is clothing specifically designed for sun protection and is produced from a fabric rated for its level of ultraviolet (UV) protection. Sun protective clothing may be pre-treated with UV inhibiting ingredients during manufacture to enhance UV blocking capacity.

UPF 40

BE SURE TO LOOK FOR THE UPF 40 ICON TO SEE WHICH RED KAP® PRODUCTS ARE MADE FROM FABRIC THAT CAN HELP PROTECT YOU FROM HARMFUL UV RAYS.

UPF Rating based upon testing performed on dry fabric, prelaundered. Test data available upon request.

CHANGES TO THE ANSI STANDARD

ANSI/ISEA 107 AND ANSI/ISEA 207 WERE COMBINED INTO ANSI/ISEA 107-2015

ANSI/ISEA 107 and ANSI/ISEA 207, American National Standard for High-Visibility Public Safety Vests, were merged to form a single document, ANSI/ISEA 107-2015. This consolidated standard covers the needs of workers in all industries for high visibility garments as well as synchronizes the revision schedules for these two previously separate documents. The standard is reviewed and revised every five years

ALLOWANCE FOR SMALL SIZED GARMENTS

Garment performance classes are defined by minimum area requirements for both background material and retroreflective striping. Prior minimum requirements for background fabric prevented manufacturers from offering a true small-sized garment. The 2015 edition of ANSI/ISEA 107 includes a reduction in the minimum requirement for background fabric in only the smallest size garment offered by a manufacturer. This change, which is still valid in the current 2020 edition, made small sized garments available to workers who previously were forced to wear garments that were too large for them in order to be compliant with the standard.



Background Fabric:
Class 2, Level 2
ANSI/ISEA 107-2010
775 Sq. In.



Background Fabric:
Type R, Class 2
ANSI/ISEA 107-2015
540 Sq. In.

LABELING REQUIREMENTS

In addition to garment brand, size and care instructions, labels must carry these elements:

- A** Must state that garment meets ANSI 107 and the year/addition of the standard the garment is certified to.
 - Must contain pictogram showing:
- B** Garment Type (O, R or P)
- C** Garment Performance Class
- D** If the garment is not FR, must state “This garment is not flame resistant as defined by ANSI/ISEA 107-2020 Section 10.5”

**ANSI-ISEA 107-2020
THIS GARMENT IS NOT
FLAME RESISTANT AS
DEFINED BY ANSI-ISEA
107-2020 SECTION 10.5**



TYPE R

CLASS 2

NOT FR

A

D

B

C

D

In 2015, there was an addition of garment types (O, R, and P) which address a wider range of occupations that should be in high visibility safety apparel.

ANSI 107 CLASSIFICATIONS

ANSI/ISEA 107

Compliant Safety Garments
are classified as follows:

HV 0 1

TYPE 0, CLASS 1

Intended for use in environments where there are struck-by hazards from moving vehicles, equipment & machinery not operating on public access rights of way or temporary traffic control zones.

- Parking/Service location workers
- Warehousing
- Oil & Gas extraction workers
- Refinery workers
- Mining

HV R 2

TYPE R, CLASS 2

Intended for use by personnel exposed to vehicular traffic from public access rights of way or roadway temporary traffic control zones. Class 2 garments require the use of greater amounts of high-visibility materials which help distinguish between a human and an inanimate object.

- Forestry operations
- Ship cargo loading operations
- Roadway construction
- Utility & railway workers
- School crossing guards
- Delivery vehicle drivers
- High volume parking and toll gate personnel
- Airport baggage & handlers/ground crew
- Trash collection & recycling operations

HV R 3

TYPE R, CLASS 3

Intended for use by personnel exposed to vehicular traffic from public access rights of way or roadway temporary traffic control zones. Class 3 garments mandate an even higher standard of visibility for workers in moving, complex backgrounds.

- Roadway construction personnel & flaggers
- Utility workers
- Survey crews

HV S E

SUPPLEMENTAL, CLASS E

Pants, bibs, overalls, shorts and gaiters meeting minimum area requirements for background material and retroreflective trim. Class E apparel, however, cannot be worn alone to provide adequate visibility of workers. When Class E items are worn with Performance Class 2 or 3 apparel, the overall classification of the ensemble is Performance Class 3.



HV P 2

TYPE P, CLASS 2

HV P 3

TYPE P, CLASS 3

Intended for emergency responders and law enforcement personnel in environments with struck-by hazards from traffic operating on public access rights of way or temporary traffic control zones.

- Police officers - Sheriff
- Fire responders - EMS



A CLASS ACT

HI-VISIBILITY
WORKWEAR FOR
ALL ANSI/ISEA 107
CLASSIFICATIONS



TYPE O, CLASS 1



**HI-VISIBILITY RIPSTOP
COLOR BLOCK WORK SHIRT**
Short & Long Sleeve, Pg. 14

TYPE R, CLASS 2



**HI-VISIBILITY RIPSTOP
COLOR BLOCK WORK SHIRT**
Short & Long Sleeve, Pg. 15



**HI-VISIBILITY RIPSTOP WORK
SHIRT WITH MIMIX & OILBLOK**
Short & Long Sleeve, Pgs. 16-17



**HI-VISIBILITY RIPSTOP
WORK SHIRT**
Short & Long Sleeve, Pg. 18



**HI-VISIBILITY WORK SHIRT –
100% POLYESTER**
Short & Long Sleeve, Pg. 19



**HI-VISIBILITY
SAFETY VEST**
Pg. 23



**HI-VISIBILITY
BOMBER** Pg. 24



**HI-VISIBILITY
JACKET** Pg. 24



**HI-VISIBILITY
PERFORMANCE
WORK HOODIE**
Pg. 26

TYPE R, CLASS 3



HI-VISIBILITY RIPSTOP WORK SHIRT WITH MIMIX & OILBLOK
Short & Long Sleeve, Pgs. 20-21



HI-VISIBILITY RIPSTOP WORK SHIRT
Short & Long Sleeve, Pg. 22



HI-VISIBILITY WORK SHIRT – 100% POLYESTER
Short & Long Sleeve, Pg. 22



HI-VISIBILITY PERFORMANCE T-SHIRT
Short & Long Sleeve, Pg. 23



HI-VISIBILITY JACKET Pg. 25



DELUXE HI-VISIBILITY COLOR BLOCK SOFT SHELL JACKET
Pg. 25



HI-VISIBILITY ZIP-FRONT COVERALL Pg. 27

SUPPLEMENTAL, CLASS E



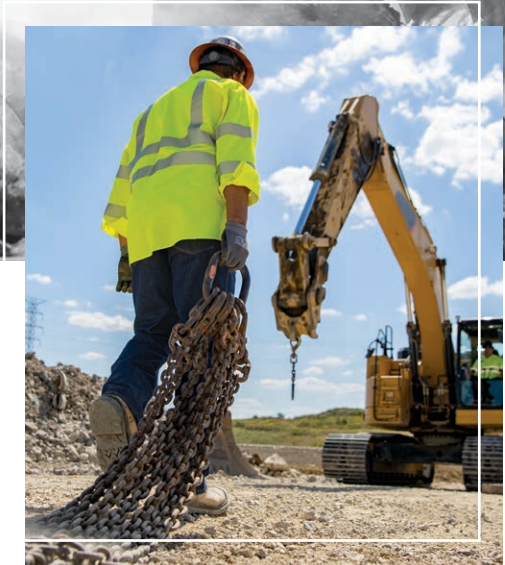
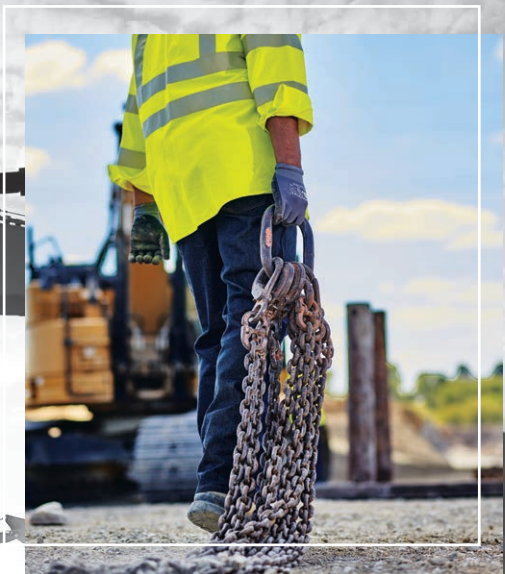
HI-VISIBILITY UTILITY POCKET PANT Pg. 27



HI-VISIBILITY



JERRY
NASHVILLE CONSTRUCTION



WORK DONE RIGHT IS
HARD TO MISS

Hi-Visibility Ripstop Work Shirt – Type R, Class 3
on pages 20-21



SY70YC

TT DP RIP UPF 40 HV 0 1

HI-VISIBILITY RIPSTOP COLOR BLOCK WORK SHIRT – TYPE O, CLASS 1

- Color blocking hides stains • 360° visibility
- 2.5" yellow/silver reflective striping
- 1.5" silver reflective striping • UPF 40 • Color retention
- Soil release • Superior wicking • Resists wrinkles
- Extra durable, lightweight ripstop fabric
- Button-close chest pockets • Pencil stall
- Fit chart MFC-46 • Industrial laundry friendly
- Meets Type O, Class 1 requirements of ANSI / ISEA 107

4.25 OZ. RIPSTOP, 65% POLYESTER / 35% COTTON
COUNTRY OF ORIGIN: IMPORTED

SY80 SHORT SLEEVE (Reg) S-4XL, (Long) L-2XL

SY70 LONG SLEEVE (Reg) S-4XL, (Long) L-2XL





SY14YC, SY24YC



SY24YG

TT DP RIP UPF 40 HV R 2

HI-VISIBILITY RIPSTOP COLOR BLOCK WORK SHIRT – TYPE R, CLASS 2

- Color blocking hides stains • 360° visibility
- 2" reflective striping • UPF 40 • Color retention • Soil release
- Superior wicking • Resists wrinkles
- Extra durable, lightweight ripstop fabric
- Button-close chest pockets • Pencil stall
- Fit chart MFC-46 • **Industrial laundry friendly**
- **Meets Type R Class 2 requirements of ANSI / ISEA 107**

4.25 OZ. RIPSTOP, 65% POLYESTER / 35% COTTON
COUNTRY OF ORIGIN: IMPORTED

SY24 SHORT SLEEVE (Reg) S-4XL, (Long) L-2XL

SY14 LONG SLEEVE (Reg) S-4XL, (Long) L-2XL



Fluorescent Yellow/Green and Charcoal Ripstop YC



Fluorescent Yellow/Green and Grey Ripstop YG



Fluorescent Yellow/Green and Navy Ripstop YN

TT DP RIP OB MX UPF 40 HV R 2

SX24HV

HI-VISIBILITY RIPSTOP WORK SHIRT WITH MIMIX & OILBLOK – TYPE R, CLASS 2

- Flex mesh panel improves mobility
- OilBlok repels the toughest fluids
- Extra durable, lightweight ripstop fabric
- Button-close chest pockets • Pencil stall
- Color retention • Soil release • Superior wickability
- 2" reflective striping • 360° visibility
- UPF 40 • Fit chart MFC-46 • Industrial laundry friendly
- Meets Type R Class 2 requirements of ANSI / ISEA 107

BODY: 4.25 OZ. RIPSTOP, 65% POLYESTER / 35% COTTON
FLEX PANEL: 4.2 OZ. PERFORMANCE MESH, 100% POLYESTER
COUNTRY OF ORIGIN: IMPORTED

SX24HV SHORT SLEEVE (Reg) S-4XL, (Long) L-2XL

SX14HV LONG SLEEVE (Reg) S-4XL, (Long) L-2XL



BUILT FOR THE WAY YOU MOVE



US PAT. NO.
10,085,490

Thanks to a patented, science-based MIMIX™ design, Red Kap® products with MIMIX™ offer increased mobility and breathability for all-day comfort. A lightweight stretch panel is located on the back of the Hi-Visibility Work Shirt with MIMIX™ & OilBlok.





SX14HV

OIL BLOK
TECHNOLOGY

OilBlok technology repels oil and oil-based fluids, keeping work shirts looking new longer - and it's only available from Red Kap®



SY14HV

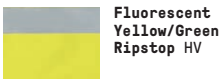
TT DP RIP UPF 40 HV R 2

HI-VISIBILITY RIPSTOP WORK SHIRT – TYPE R, CLASS 2

- 360° visibility • 2" reflective striping
- UPF 40 • Color retention • Soil release
- Superior wicking • Resists wrinkles
- Extra durable, lightweight ripstop fabric
- Button-close chest pockets • Pencil stall
- Fit chart MFC-46 • Industrial laundry friendly
- Meets Type R Class 2 requirements of ANSI/ISEA 107

4.25 OZ. RIPSTOP, 65% POLYESTER / 35% COTTON
COUNTRY OF ORIGIN: IMPORTED

SY24HV SHORT SLEEVE (Reg) S-4XL, (Long) L-2XL
SY14HV LONG SLEEVE (Reg) S-4XL, (Long) L-2XL



SY24HV



TT DP UPF 40 HV R 2

HI-VISIBILITY WORK SHIRT – 100% POLYESTER – TYPE R, CLASS 2

- 360° visibility • 2" reflective striping • UPF 40
- Color retention • Soil release • Superior wicking
- Resists wrinkles • 100% Polyester
- Button-close chest pockets
- Pencil stall • Fit chart MFC-46
- Industrial laundry friendly
- Meets Type R Class 2 requirements of ANSI/ISEA 107

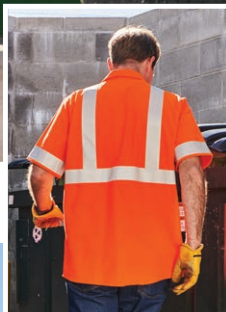
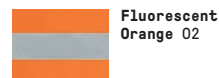
5 OZ. POPLIN, 100% POLYESTER
COUNTRY OF ORIGIN: IMPORTED

SS24HV SHORT SLEEVE (Reg) S-4XL, (Long) L-2XL

SS14HV LONG SLEEVE (Reg) S-4XL, (Long) L-2XL

SS2402 SHORT SLEEVE (Reg) S-4XL, (Long) L-2XL

SS1402 LONG SLEEVE (Reg) S-4XL, (Long) L-2XL



SS2402



SS24AB, SS1402

FLEX MESH PANEL IMPROVES
MOBILITY & BREATHABILITY
FOR ACTIVE WORKERS



SX14AB, SX24AB



US PAT. NO.
10,085,490

Thanks to a patented, science-based MIMIX[™] design, Red Kap[®] products with MIMIX[™] offer increased mobility and breathability for all-day comfort. A lightweight stretch panel is located on the back of the Hi-Visibility Work Shirt with MIMIX[™] & OilBlok.





SX24AB

TT DP RIP OB MX UPF 40 HV R 3

HI-VISIBILITY RIPSTOP WORK SHIRT WITH MIMIX & OILBLOK – TYPE R, CLASS 3

- Flex mesh panel improves mobility
- OilBlok repels the toughest fluids
- Extra durable, lightweight ripstop fabric
- Button-close chest pockets
- Pencil stall
- Color retention
- Soil release
- Superior wickability
- 2" reflective striping
- 360° visibility
- UPF 40
- Fit chart MFC-46
- Industrial laundry friendly
- Meets Type R Class 3 requirements of ANSI / ISEA 107

BODY: 4.25 OZ. RIPSTOP, 65% POLYESTER / 35% COTTON

FLEX PANEL: 4.2 OZ. PERFORMANCE MESH, 100% POLYESTER


COUNTRY OF ORIGIN: IMPORTED


SX24AB SHORT SLEEVE (Reg) S-4XL, (Long) L-2XL

SX14AB LONG SLEEVE (Reg) S-4XL, (Long) L-2XL

Fluorescent
Yellow/Green
Ripstop AB







OIL BLOK
TECHNOLOGY

OilBlok technology repels oil and oil-based fluids, keeping work shirts looking new longer - and it's only available from Red Kap®



SY14AB

TT DP RIP UPF 40 HV R 3

HI-VISIBILITY RIPSTOP WORK SHIRT – TYPE R, CLASS 3

- 360° visibility • 2" reflective striping
- UPF 40 • Color retention • Soil release
- Superior wicking • Resists wrinkles
- Extra durable, lightweight ripstop fabric
- Button-close chest pockets • Pencil stall
- Fit chart MFC-46 • **Industrial laundry friendly**
- **Meets Type R Class 3 requirements of ANSI/ISEA 107**

4.25 OZ. RIPSTOP, 65% POLYESTER / 35% COTTON
COUNTRY OF ORIGIN: IMPORTED

SY24AB SHORT SLEEVE (Reg) S-4XL, (Long) L-2XL

SY14AB LONG SLEEVE (Reg) S-4XL, (Long) L-2XL



TT DP UPF 40 HV R 3

HI-VISIBILITY WORK SHIRT – 100% POLYESTER – TYPE R, CLASS 3

- 360° visibility • 2" reflective striping
- UPF 40 • Color retention • Soil release
- Superior wicking • Resists wrinkles
- 100% Polyester • Button-close chest pockets
- Pencil stall • Fit chart MFC-46
- **Industrial laundry friendly**
- **Meets Type R Class 3 requirements of ANSI/ISEA 107**

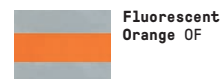
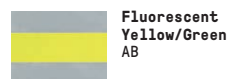
5 OZ. POPLIN, 100% POLYESTER
COUNTRY OF ORIGIN: IMPORTED

SS24AB SHORT SLEEVE (Reg) S-4XL, (Long) L-2XL

SS14AB LONG SLEEVE (Reg) S-4XL, (Long) L-2XL

SS240F SHORT SLEEVE (Reg) S-4XL, (Long) L-2XL

SS140F LONG SLEEVE (Reg) S-4XL, (Long) L-2XL





HV R 3

HI-VISIBILITY PERFORMANCE T-SHIRT – TYPE R, CLASS 3

- Extra breathable mesh fabric
- Chest pocket
- 2" reflective striping
- 360° visibility
- UPF 40 • Fit chart MFC-03
- Meets Type R Class 3 requirements of ANSI/ISEA 107

4 OZ. BIRDSEYE MESH, 100% POLYESTER
COUNTRY OF ORIGIN: IMPORTED

SVY4AB SHORT SLEEVE (Reg) S-6XL, (Long) L-6XL

SVY3AB LONG SLEEVE (Reg) S-6XL



Fluorescent
Yellow/Green
AB



HV R 2

SAFETY VEST TYPE R, CLASS 2

- 360° visibility
- 2" silver reflective striping
- Dual sizing
- Adjustable sides
- Velcro front
- Fit chart MFC-18
- Meets Type R Class 2 requirements of ANSI/ISEA 107

4.7 OZ. 100% POLYESTER
COUNTRY OF ORIGIN: IMPORTED

VYV6YE S/M, L/XL, 2XL/3XL, 4XL/5XL



Fluorescent
Yellow/Green
YE

JY38HVB



BACK

UPF 40 HV R 2

HI-VISIBILITY BOMBER TYPE R, CLASS 2

- 360° visibility
- 2" silver reflective striping
- UPF 40
- Storm-flap covered zipper
- Stand-up collar
- Lined snap-close cuffs
- Oversized hand-warmer pockets
- Inside chest pocket
- Action back
- Fit chart MFC-17
- **Industrial laundry friendly**
- Allow additional time for delivery
- **Meets Type R Class 2 requirements of ANSI/ISEA 107**

7.5 OZ. TWILL, 100% POLYESTER
COUNTRY OF ORIGIN: IMPORTED

JY38HVB (Reg) M-4XL, (Long) M-3XL



JY32HV

UPF 40 HV R 2

HI-VISIBILITY JACKET TYPE R, CLASS 2

- 360° visibility
- 2" silver reflective striping
- UPF 40
- Button-close chest pockets
- Adjustable cuffs and waist
- Unlined
- Fit chart MFC-12
- **Industrial laundry friendly**
- Compatible with Zip-in/Zip-out Liner on page 65
- **Meets Type R Class 2 requirements of ANSI/ISEA 107**

7.5 OZ. TWILL, 100% POLYESTER
COUNTRY OF ORIGIN: IMPORTED

JY32HV (Reg) 38-54, (Long) 42-50





JY32AB

UPF 40 HV R 3

HI-VISIBILITY JACKET TYPE R, CLASS 3

- 360° visibility
- 2" silver reflective striping
- UPF 40
- Button-close chest pockets
- Adjustable cuffs and waist
- Unlined
- Fit chart MFC-12
- **Industrial laundry friendly**
- Compatible with Zip-in/Zip-out Liner on page 63
- **Meets Type R Class 3 requirements of ANSI / ISEA 107**

7.5 OZ. TWILL, 100% POLYESTER
COUNTRY OF ORIGIN: IMPORTED

JY32AB (Reg) 38-54, (Long) 42-50



Fluorescent
Yellow/Green
AB



JY34YB

DWR HV R 3

DELUXE HI-VISIBILITY COLOR BLOCK SOFT SHELL JACKET – TYPE R, CLASS 3

- 360° visibility • 2" stretch silver reflective striping
- Wind and water-resistant • Stretch fabric
- Fleece lining • Modern fit and styling
- Stand-up collar • Front zipper pockets
- Zippered chest pocket • Headphone storage
- Adjustable drawstring waist • Fit chart MFC-25
- **Industrial laundry friendly**
- **Meets Type R Class 3 requirements of ANSI / ISEA 107**

9 OZ. SOFT SHELL, 95% POLYESTER / 5% SPANDEX
COUNTRY OF ORIGIN: IMPORTED

JY34YB (Reg) S-4XL



Fluorescent
Yellow/Green
and Black YB

DWR



Durable Water Repellent (DWR)
finish repels water and
water-based liquids.

NEW



HJ10YB



HJ10YB

ZS DWR SAFE-C HV R 2

HI-VISIBILITY PERFORMANCE WORK HOODIE WITH SAFECINCH™ TYPE R, CLASS 2

- Wind and water resistant
- Modern fit and styling
- 2" stretch silver reflective striping
- ZeroScratch™ front zipper with zipper garage
- Hidden drawstring and neck cinches
- Versatile lay flat or zip-up collar
- Front pouch pockets
- Sleeve utility pocket
- Cell phone security pocket
- Rib knit cuffs and waistband
- Add embroidery, heat seals or emblems for unique garment personalization
- Fit chart MFC-105
- Industrial laundry friendly
- Meets Type R Class 2 requirements of ANSI/ISEA 107

9.3 OZ. FLEECE, 100% POLYESTER
COUNTRY OF ORIGIN: IMPORTED

HJ10YB UNISEX (Reg) XS-4XL, (Long) L-XL

Vis Yellow/
Black YB

US PAT. NO.
8,875,313

SafeCinch™

Drawstrings are tucked away in front pockets, eliminating loose strings and safety hazards. Plus, this innovative functionality offers a neater appearance and easier laundering.

DWR

Durable Water Repellent (DWR) finish repels water and water-based liquids.



CT10HVB



CT100VB



PT18HVB

UPF 40 HV R 3

HI-VISIBILITY ZIP-FRONT COVERALL TYPE R, CLASS 3

- 360° visibility • 2" silver reflective striping • UPF 40
- Wear over clothes • Front & back pockets • Chest pockets
- Rule leg pocket • Side vent opening • Fit chart MFC-24
- **Industrial laundry friendly** • Allow additional time for delivery
- **Meets Type R Class 3 requirements of ANSI/ISEA 107**

7.5 OZ. TWILL, 100% POLYESTER
COUNTRY OF ORIGIN: IMPORTED

CT10HVB (Short) 38-56, (Reg) 32-70, (Long) 32-70, (X-Long) 46-50

CT100VB (Short) 38-56, (Reg) 32-70, (Long) 32-70, (X-Long) 46-50



Fluorescent
Yellow/Green
HV



Fluorescent
Orange OR

UPF 40 HV S E

UTILITY POCKET PANT SUPPLEMENTAL, CLASS E

- 360° visibility • 2" silver reflective striping
- UPF 40 • Front & back pockets
- Cargo pockets with hidden snaps
- **Industrial laundry friendly**
- Allow additional time for delivery
- **Meets Supplemental Class E requirements of ANSI/ISEA 107**

7.5 OZ. TWILL, 100% POLYESTER
COUNTRY OF ORIGIN: IMPORTED

PT18HVB 28-54



Fluorescent
Yellow/Green
HV



Isaac

AJAX TURNER

ENHANCED VISIBILITY



ISAAC
AJAX TURNER



WORK HARD AND
BE SEEN WORKING HARD

Enhanced Visibility Industrial Work Shirt & Cargo Pant on pages 30 & 33

SP24EN



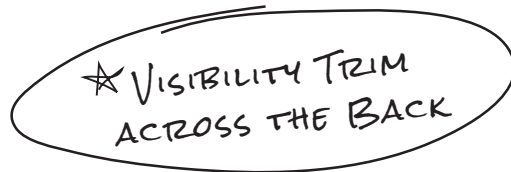
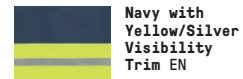
ENHANCED VISIBILITY INDUSTRIAL WORK SHIRT

- 2.5" Yellow/Silver enhanced visibility trim
- Button-close chest pockets • Pencil stall
- Fit chart MFC-46 • **Industrial laundry friendly**
- **Does not meet ANSI/ISEA 107 requirements**

4.25 OZ. POPLIN, 65% POLYESTER / 35% COTTON
COUNTRY OF ORIGIN: IMPORTED

SP24EG SHORT SLEEVE (Reg) S-4XL, (Long) L-2XL
SP14EG LONG SLEEVE (Reg) S-4XL, (Long) L-2XL

SP24EN SHORT SLEEVE (Reg) S-4XL, (Long) L-2XL
SP14EN LONG SLEEVE (Reg) S-4XL, (Long) L-2XL



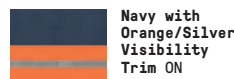
ENHANCED VISIBILITY SHIRT

- 2.5" Orange/Silver enhanced visibility trim
- Color retention • Soil release • Superior wicking
- Button-close chest pockets • Pencil stall
- Fit chart MFC-46 • **Industrial laundry friendly**
- **Does not meet ANSI/ISEA 107 requirements**

4.25 OZ. POPLIN, 65% POLYESTER / 35% COTTON
COUNTRY OF ORIGIN: IMPORTED

SP24ON SHORT SLEEVE (Reg) S-4XL, (Long) L-2XL
SP14ON LONG SLEEVE (Reg) S-4XL, (Long) L-3XL

SP24WM SHORT SLEEVE (Reg) S-4XL, (Long) M-2XL
SP14WM LONG SLEEVE (Reg) S-4XL, (Long) M-3XL



SP14ON



SC40EG

ENHANCED VISIBILITY COTTON WORK SHIRT

- 2.5" Yellow/Silver enhanced visibility trim
- Easy care finish • 100% Cotton
- Button-close chest pockets • Pencil stall
- Fit chart MFC-46 • **Industrial laundry friendly**
- **Does not meet ANSI/ISEA 107 requirements**

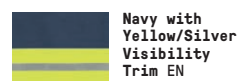
6 OZ. TWILL, 100% COTTON
COUNTRY OF ORIGIN: IMPORTED

SC40EG SHORT SLEEVE (Reg) S-4XL, (Long) L-2XL

SC30EG LONG SLEEVE (Reg) S-4XL, (Long) L-2XL

SC40EN SHORT SLEEVE (Reg) S-4XL, (Long) L-2XL

SC30EN LONG SLEEVE (Reg) S-4XL, (Long) L-2XL



SY24YE

TT DP RIP UPF 40

ENHANCED VISIBILITY RIPSTOP WORK SHIRT

- Extra durable, lightweight ripstop fabric
- UPF 40 • Button-close chest pockets • Pencil stall
- Fit chart MFC-46 • **Industrial laundry friendly**
- **Does not meet ANSI/ISEA 107 requirements**

4.25 OZ. RIPSTOP, 65% POLYESTER / 35% COTTON
COUNTRY OF ORIGIN: IMPORTED

SY24YE SHORT SLEEVE (Reg) S-4XL, (Long) L-2XL

SY14YE LONG SLEEVE (Reg) S-4XL, (Long) L-2XL





UPF 40

ENHANCED VISIBILITY WORK SHIRT

- UPF 40 • Pencil stall • Button-close chest pockets
- Fit chart MFC-46 • **Industrial laundry friendly**
- **Does not meet ANSI/ISEA 107 requirements**

5 OZ. POPLIN, 100% POLYESTER
COUNTRY OF ORIGIN: IMPORTED

SS24OR SHORT SLEEVE (Reg) S-3XL, (Long) L-2XL

SS14OR LONG SLEEVE (Reg) S-3XL, (Long) L-2XL

SS24YE SHORT SLEEVE (Reg) S-3XL, (Long) L-2XL

SS14YE LONG SLEEVE (Reg) S-3XL, (Long) L-2XL



Fluorescent
Orange OR



Fluorescent
Yellow/Green YE

SS24OR

SS14YE

R FIT

ENHANCED VISIBILITY RELAXED FIT JEAN

- 2.5" Yellow/Silver enhanced visibility trim
- Relaxed fit • Fits over boots
- **Industrial laundry friendly**
- **Does not meet ANSI/ISEA 107 requirements**

13.75 OZ. HEAVYWEIGHT DENIM,
100% COTTON
COUNTRY OF ORIGIN: IMPORTED

PD60ED 30-48



Prewashed Denim
with Yellow/Silver
Visibility Trim ED

PD60ED





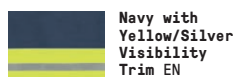
TT PRO DP

ENHANCED VISIBILITY CARGO PANT

- 2.5" Yellow/Silver enhanced visibility trim
- Color retention
- Soft hand
- Soil release
- Resists wrinkles
- Traditional easy fit
- Cargo pockets with snap-close flaps
- Front & back pockets
- **Industrial laundry friendly**
- **Does not meet ANSI/ISEA 107 requirements**

7.5 OZ. TWILL,
65% POLYESTER / 35% COTTON
COUNTRY OF ORIGIN: IMPORTED

PT88EN 30-48



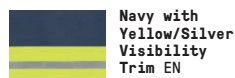
TT PRO DP

ENHANCED VISIBILITY DURA-KAP® INDUSTRIAL PANT

- 2.5" Yellow/Silver enhanced visibility trim
- Color retention
- Soft hand
- Soil release
- Resists wrinkles
- Traditional easy fit
- Front & back pockets
- **Industrial laundry friendly**
- **Does not meet ANSI/ISEA 107 requirements**

7.5 OZ. TWILL,
65% POLYESTER / 35% COTTON
COUNTRY OF ORIGIN: IMPORTED

PT20EN 30-48



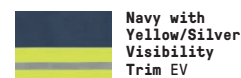
DP

ENHANCED VISIBILITY COTTON WORK PANT

- 2.5" Yellow/Silver enhanced visibility trim
- Color retention
- Soft hand
- Soil release
- Resists wrinkles
- Easy fit
- Front & back pockets
- **Industrial laundry friendly**
- **Does not meet ANSI/ISEA 107 requirements**

8.5 OZ. TWILL,
100% WRINKLE-RESISTANT COTTON
COUNTRY OF ORIGIN: IMPORTED

PC20EV 30-56





HJ10YE



HJ10YE

ZS DWR SAFE-C

ENHANCED VISIBILITY PERFORMANCE WORK HOODIE WITH SAFECINCH™

- Wind and water resistant
- Modern fit and styling
- ZeroScratch™ front zipper with zipper garage
- Hidden drawstring and neck cinches
- Versatile lay flat or zip-up collar
- Front pouch pockets
- Sleeve utility pocket
- Cell phone security pocket
- Rib knit cuffs and waistband
- Add embroidery, heat seals or emblems for unique garment personalization
- Fit chart MFC-105
- **Industrial laundry friendly**
- **Does not meet ANSI/ISEA 107 requirements**

9.3 OZ. FLEECE, 100% POLYESTER

HJ10YE UNISEX (Reg) XS-4XL, (Long) L-XL

Vis Yellow
YE

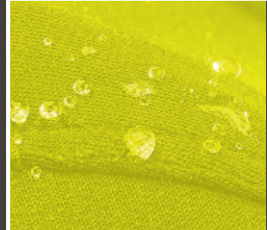
US PAT. NO.
8,875,313




SafeCinch™



Drawstrings are tucked away in front pockets, eliminating loose strings and safety hazards. Plus, this innovative functionality offers a neater appearance and easier laundering.



DWR



Durable Water Repellent (DWR) finish repels water and water-based liquids.



JT50EN

ENHANCED VISIBILITY PERMA-LINED JACKET

- 2.5" Yellow/Silver enhanced visibility trim
- Black quilt lining • Hip length
- Fit chart MFC-12 • Industrial laundry friendly
- Does not meet ANSI/ISEA 107 requirements

7.25 OZ. TWILL, 65% POLYESTER / 35% COTTON
COUNTRY OF ORIGIN: IMPORTED

JT50EC (Reg) S-3XL, (Long) L-2XL

JT50EN (Reg) S-3XL, (Long) L-2XL



Charcoal with
Yellow/Silver
Visibility
Trim EC



Navy with
Yellow/Silver
Visibility
Trim EN



JT50EC

CT10EN



ENHANCED VISIBILITY TWILL ACTION-BACK COVERALL

- 2.5" Yellow/Silver enhanced visibility trim
- Chest pockets • Oversized back pockets
- Rule pocket • Fit chart MFC-24
- Industrial laundry friendly
- Does not meet ANSI/ISEA 107 requirements

7.25 OZ. TWILL, 65% POLYESTER / 35% COTTON
COUNTRY OF ORIGIN: IMPORTED

CT10EN (Reg) 38-54, (Long) 44-48



Navy with
Yellow/Silver
Visibility
Trim EN



CUSTOMIZATION



BLAKE
NASHVILLE READY MIX



STRIPING OPTIONS THAT
REALLY STAND OUT

VISIBILITY APPAREL CUSTOMIZATION

REFLECTIVE TRIM

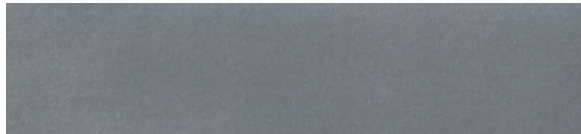
There are several options and widths of reflective trim that can be selected for attachment to your garments. A few examples of how a work shirt, pant, or coverall can be transformed into an enhanced-visibility garment are provided on the next several pages. For additional placement information, contact a Workwear Outfitters Customer Service Representative at: 1.800.733.5271.

HW - HOME WASH

(NOT SHOWN ACTUAL SIZE)



Description: 1" Silver, EH5226 Activity: GV



Description: 2" Silver, EH5225 Activity: 10



Description: 1 1/2" Yellow/1/2" Silver/Yellow, EH5281 Activity: YV

IL - INDUSTRIAL LAUNDRY

(NOT SHOWN ACTUAL SIZE)



Description: 1 1/2" Yellow/1/2" Silver/Yellow, EH5430 Activity: 1K



Description: 2" Yellow/3/4" Silver/Yellow, EH5221 Activity: 3N



Description: 2 1/2" Yellow/1/2" Silver/Yellow, EH5282 Activity: 1E

IL - INDUSTRIAL LAUNDRY

(NOT SHOWN ACTUAL SIZE)



Description: 1/2" Silver, EH5279



Description: 1" Silver, EH5277



Description: 2" Silver, EH5276

IL - INDUSTRIAL LAUNDRY

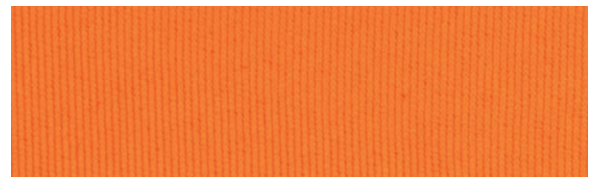
(NOT SHOWN ACTUAL SIZE)



Description: 1 1/2" Orange/1/2" Silver/Orange, EH5280



Description: 2 1/2" Orange/1/2" Silver/Orange, EH5278



Description: 2 1/2" Orange, EH5336

2.5" ORANGE/SILVER/ORANGE PACKAGED STRIPE OPTIONS



ACTUAL SIZE SHOWN:
2½" Orange/½" Silver/Orange

SHOWN ON LOT# ST52CH
PACKAGE CODE: DM6



SHOWN ON LOT# PT62CH
PACKAGE CODE: DM7



SHOWN ON LOT# CT10CH
PACKAGE CODE: DT1

2" YELLOW/SILVER/YELLOW PACKAGED STRIPE OPTIONS



ACTUAL SIZE SHOWN:
2" Yellow/ 3/4" Silver/Yellow

SHOWN ON LOT# SP14NV
PACKAGE CODE: FXO

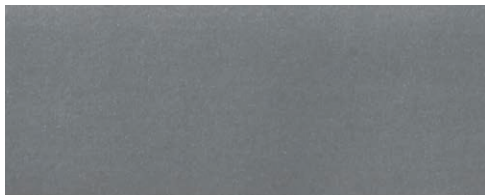


SHOWN ON LOT# PT20NV
PACKAGE CODE: DP3

SHOWN ON
LOT# JT22NV
PACKAGE
CODE: D71



1" SILVER PACKAGED STRIPE OPTIONS



ACTUAL SIZE SHOWN: 1" Silver



SHOWN ON LOT# PT66NV
PACKAGE CODE: 1W4



SHOWN ON LOT# PD60PW
PACKAGE CODE: DLK



SHOWN ON
LOT# SY60LB
PACKAGE
CODE: 1V7



SHOWN ON
LOT# JP66NV
PACKAGE
CODE: 4P1



MEN'S MEASURING CHARTS

MFC-03 MEN'S KNIT SHIRTS

Size	XXS	XS	S	M	L	XL	XXL	3XL	4XL	5XL	6XL	7XL	8XL
Chest	29-32	32-35	35-38	38-41	41-45	45-49½	49½-54	54-58½	58½-63	63-67½	67½-72	72-76½	76½-81

Height Regular: up to 5'11" Tall: over 5'11"

MFC-12 MEN'S JACKETS

Alpha Size	XS		S		M		L		XL		XXL		3XL		4XL		5XL		6XL		7XL		8XL	
Chest Size	32	34	36	38	40	42	44	46	48	50	52	54	56	58	60	62	64	66	68	70	72	74	76	78
Chest Max.	32"	34"	36"	38"	40"	42"	44"	46"	48"	50"	52"	54"	56"	58"	60"	62"	64"	66"	68"	70"	72"	74"	76"	78"

NOTE: If waist size is larger than chest size, use waist measurement as size. HEIGHT: Short: 5'3" - 5'7" Regular: 5'7" - 5'11" Long: 5'11" - 6'3" XLong: 6'3" - 6'7"

MFC-17 MEN'S PARKAS

Alpha Size	XS	S	M	L	XL	XXL	3XL	4XL	5XL
Chest Max.	34	36	40	44	48	50	52	54	56

NOTE: If waist size is larger than chest size, use waist measurement as size.

MFC-18 MEN'S VEST

Alpha Size	M	XL	3XL	5XL	7XL
Chest Max.	40	48	52	56	60

MFC-24 MEN'S UNLINED COVERALLS AND OVERALLS

Alpha Size	XS		S		M		L		XL		XXL		3XL		4XL		5XL	
Numeric Size	32	34	36	38	40	42	44	46	48	50	52	54	56	58	60	62	64	66
Chest Size	30½-32	32½-34	34½-36	36½-38	38½-40	40½-42	42½-44	44½-46	46½-48	48½-50	50½-52	52½-54	54½-56	56½-58	58½-60	60½-62	62½-64	64½-66
Waist Max.	30½	32½	34½	36½	38½	40½	42½	44½	46½	48½	50½	52½	54½	56½	58½	60½	62½	64½

Short: 5'3" - 5'7" Regular: 5'7" - 5'11" Long: 5'11" - 6'3" XLong: 6'3" - 6'7"

MFC-25 MEN'S JACKET

Alpha Size	XS	S	M	L	XL	XXL	3XL	4XL	5XL
Chest Max.	36	39	42	45	48	52	55	58	63

NOTE: If waist size is larger than chest size, use waist measurement as size.

MFC-46 MEN'S ALPHA DRESS SHIRT FIT CHART

Size	S	M	L	XL	2XL	3XL	4XL	5XL	
Neck	13½-14½	14½-15½	15½-16½	16½-17½	17½-18½	18½-19½	19½-20½	20½-21½	
Chest	34½-38	38½-42	42½-46	46½-50	50½-53	53½-56	56½-59	59½-62	
Max. Waist	36	40	44	48	51½	55	58½	62	
Sleeve Length	RG	34¼	34¼	35¼	35¼	36¼	36¼	37¼	37¼
	LN	35¼	36¼	36¼	37¼	37¼	38¼	38¼	39¼
	XLN	37¼	37¼	38¼	38¼	39¼	39¼	40¼	40¼
Back Length	RG	Regular Back Length							
	LN	Regular Back Length plus 1½"							
	XLN	Regular Back Length plus 4"							
	SS	Regular Back Length							
	SSL	Regular Back Length plus 4"							

MFC-105 MEN'S JACKETS

Alpha Size	XS	S	M	L	XL	XXL	3XL	4XL	5XL
Chest Max.	36	39	42	45	49	53	57	61	65

NOTE: If waist size is larger than chest, size, use waist measurement as size.

INDEX / QUICK REFERENCE GUIDE

LOT #	PAGE	SIZE CHART	LOT #	PAGE	SIZE CHART	LOT #	PAGE	SIZE CHART
CT10EN	35	MFC-24	SP24WM	30	MFC-46	SY14YG	15	MFC-46
CT10HVB	27	MFC-24	SS14AB	22	MFC-46	SY14YN	15	MFC-46
CT100VB	27	MFC-24	SS14HV	19	MFC-46	SY24AB	22	MFC-46
HJ10YB	26	MFC-105	SS14OF	22	MFC-46	SY24HV	18	MFC-46
HJ10YE	34	MFC-105	SS14OR	32	MFC-46	SY24YC	15	MFC-46
JT50EC	35	MFC-12	SS14O2	19	MFC-46	SY24YE	31	MFC-46
JT50EN	35	MFC-12	SS14YE	32	MFC-46	SY24YG	15	MFC-46
JY32AB	25	MFC-12	SS24AB	22	MFC-46	SY24YN	15	MFC-46
JY32HV	24	MFC-12	SS24HV	19	MFC-46	SY70YC	14	MFC-46
JY34YB	25	MFC-25	SS24OF	22	MFC-46	SY70YN	14	MFC-46
JY38HVB	24	MFC-17	SS24OR	32	MFC-46	SY80YC	14	MFC-46
PC20EV	33		SS24O2	19	MFC-46	SY80YN	14	MFC-46
PD60ED	32		SS24YE	32	MFC-46	VYV6YE	23	MFC-18
PT18HVB	27		SVY3AB	23	MFC-03			
PT20EN	33		SVY4AB	23	MFC-03			
PT88EN	33		SX14AB	20-21	MFC-46			
SP14EG	30	MFC-46	SX14HV	16-17	MFC-46			
SP14EN	30	MFC-46	SX24AB	20-21	MFC-46			
SP14ON	30	MFC-46	SX24HV	16-17	MFC-46			
SP14WM	30	MFC-46	SY14AB	22	MFC-46			
SP24EG	30	MFC-46	SY14HV	18	MFC-46			
SP24EN	30	MFC-46	SY14YC	15	MFC-46			
SP24ON	30	MFC-46	SY14YE	31	MFC-46			



CAUTION: Garments contained in this catalog meet government flammability Class 1 requirements but do not provide protection from ignition sources, molten substances or chemical exposure. Special flame-resistant garments are available if required.

Product images and fabric swatches shown here are photomechanically reproduced. As a result, colors may vary from actual fabric samples.

© 2022 Workwear Outfitters, LLC Red Kap®, a brand of Workwear Outfitters, LLC