

BARCO®

Spring | Summer 2023



BARCO®
Made to Matter

TABLE OF CONTENTS

06	BARCO® UNIFY
16	GREY'S ANATOMY™ Spandex-Stretch
36	GREY'S ANATOMY™ Impact
42	GREY'S ANATOMY™ Signature
46	GREY'S ANATOMY™ Classic
54	BARCO® ONE
70	SKECHERS™ BY BARCO®
80	LABCOATS
88	BARCO® DETAILS



ON THE COVER

BUW884 Team Warm-Up	BUW881 Rally Warm-Up
BUT156 Gratitude Top	BUT153 Rally Top
BUP606 Mission Jogger	BUP602 Rally Jogger

BarcoUniforms.com

Dear Valued Partners,

Like you, we serve people who spend most of their days in scrubs. These healthcare professionals deserve nothing but the best: the best fit, fabric, and function to make them look and feel like the heroes they are. That was our philosophy when we designed the first fashion-forward uniform, pioneering healthcare apparel almost a century ago, and it remains our mission today.

Every Barco garment is held to the same standard that our founder, Kenneth Donner, set back then — with craftsmanship, style, and durability that's more custom than cookie-cutter. Our in-house designers fit every garment on live models multiple times until each one is perfected. That attention to detail brings a difference your customers can see and feel in every stitch, pocket, snap, zipper, and waist band. The unexpected details are the heart behind our designs.

Our purpose has always been to enhance the lives of healthcare professionals by offering best-in-class medical apparel while running our business in a way that generates lasting value for our retail partners.

From fan-favorite styles and on-trend seasonal colors to our unique prints and much-anticipated BARCO UNIFY collection, it is my pleasure to share our new Spring/Summer 2023 catalog with you!

With heartfelt gratitude,

Ron Wagenseil

President / Chief Executive Officer

BARCO®

BARCO[®] BRANDS

GREY'S ANATOMY™

**GAME
CHANGER**



**Spandex
Stretch**



**Soil
Release**



**Extreme
Comfort**



**Moisture
Wicking**

**TAILORED
SOPHISTICATION**



**360°
Spandex Stretch**



**Wrinkle
Release**



**Super-Soft
Touch**



**Luxurious
Appeal**

**IMPACTFUL
DETAILS**



**Spandex
Stretch**



**Soil
Release**



**Extreme
Comfort**



**Moisture
Wicking**

**AUTHENTIC
STYLE**



**Moisture
Wicking**



**Easy
Care**



**Super-Soft
Touch**



**All-Day
Freshness**

BARCO[®]

**SUSTAINABLE
PERFORMANCE**



**5 Recycled Bottles
Per Garment**



**4-Way
Stretch**



**Moisture
Wicking**



**Anti
Static**

**MADE TO
UNITE**



**Wrinkle
Release**



**360°
Spandex Stretch**



**Moisture
Wicking**



**Super-Soft
Touch**

SKECHERS™

**SUSTAINABLE
VALUE**



**Eco-Friendly
Fabric**



**4-Way
Stretch**



**Moisture
Wicking**



**Comfort
Included**

New Fashion Colors

Spring 2023

DECEMBER - APRIL

Summer 2023

APRIL - JULY



512 Brilliance

2183 Lemon Glow

2253 Tropical Tide

2188 Pink Lemonade



2144 Rosy Coral

2255 Mint Cream



2185 Dark Jade

2096 Lavender Winds



2238 Fresco Blue



2189 Lime Juice

NEW Summer Color

2238 Fresco Blue



BARCO
UNIFY

PRIMARY FABRIC CONTENT

71% Polyester | 24% Rayon | 5% Spandex

New Summer Color

10 White



Wrinkle Release



360° Spandex-Stretch



Moisture-Wicking



Super-Soft Touch

BARCO®
Made to Matter

BARCO UNIFY

❖ NOT SOLD ON AMAZON

All Styles Main Fabric

71% Polyester
24% Rayon
5% Spandex twill

Spring
Delivery
12/1/22



BUT156 Gratitude Top

4-pocket Sweetheart neckline, princess seams, dyed-to-match front zip pocket, PDA, curved back hem top
 Sizes: XXS-5XL, CB: 26"
 Color shown: 65 Wine

BUT163 Mission Top

1-pocket, Henley style neckline, dyed-to-match button placket, welt chest pocket, straight hem, tuck in style top
 Sizes: XXS-5XL, CB: 26.5"
 Color shown: 65 Wine
 Pant shown: BUP606-65

BUP606 Mission Jogger

6-pocket, high rise jogger, elastic waistband with drawcord, front welt pockets, PDA welt, double single cargo pockets, elastic hem jogger
 Sizes: XS-5XL, I: 29"
 XSP-XLP, I: 27"
 ST-XLT, I: 31"
 Color shown: 65 Wine

NEW COLORS

SPRING

Wine

Bahama

See page 14-15 for additional colors



BUT167 Purpose Top

4-pocket, V-neckline, shoulder contrast badge loop, zip pocket PDA, tool strip detail at front pockets

Sizes: XXS-5XL, CB: 25.5"

Color shown: 328 Bahama

BUP601 Purpose Pant

5-pocket, high-rise slim pant, flat front waistband with interior drawcord, dyed-to-match zip front pockets, double cargo PDA pocket, back pocket pant

Sizes: XXS-5XL, I: 30.5"

XXSP-XLP, I: 28.5"

ST-XLT, I: 32.5"

Color shown: 328 Bahama

NEW COLORS

SPRING

Wine

Bahama

See page 14-15 for additional colors



All Styles Main Fabric

71% Polyester

24% Rayon

5% Spandex twill

All Styles Main Fabric

71% Polyester

24% Rayon

5% Spandex twill

Summer
Delivery

4/1/23

BUT156 Gratitude Top

4-pocket Sweetheart neckline, princess seams, dyed-to-match front zip pocket, PDA, curved back hem top

Sizes: XXS-5XL, CB: 26"

Color shown: 2238 Fresco Blue

BUT163 Mission Top

1-pocket, Henley style neckline, dyed-to-match button placket, welt chest pocket, straight hem, tuck in style top

Sizes: XXS-5XL,

CB: 26.5"

Color shown: 2238 Fresco Blue

Pant shown: BUP606-2238

BUP606 Mission Jogger

6-pocket, high rise jogger, elastic waistband with drawcord, front welt pockets, PDA welt, double single cargo pockets, elastic hem jogger

Sizes: XS-5XL, I: 29"

XSP-XLP, I: 27"

ST-XLT, I: 31"

Color shown:

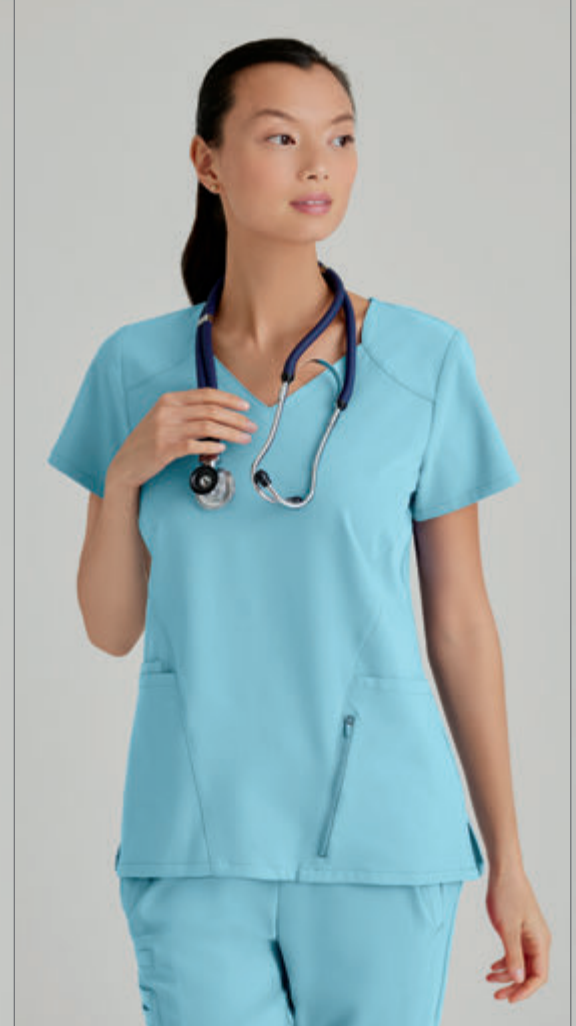
2238 Fresco Blue

NEW COLORS

SUMMER

White	Ciel	Fresco Blue
-------	------	-------------

See page 14-15 for additional colors



❖ NOT SOLD ON AMAZON

All Styles Main Fabric

71% Polyester

24% Rayon

5% Spandex twill



BUW884 Team Warm-Up

3-pocket Low funnel neckline, princess seams, dyed-to-match zip front pockets, shoulder contrast badge loop, front pockets, welt sleeve PDA, back waist detail, rib cuff sleeves jacket

Sizes: XS-5XL, CB: 26"

Color shown: 10 White

BUT167 Purpose Top

4-pocket, V-neckline, shoulder contrast badge loop, zip pocket PDA, tool strip detail at front pockets

Sizes: XXS-5XL, CB: 25.5"

Color shown: 10 White

BUP601 Purpose Pant

5-pocket, high-rise slim pant, flat front waistband with interior drawcord, dyed-to-match zip front pockets, double cargo PDA pocket, back pocket pant

Sizes: XXS-5XL, I: 30.5"

XXSP-XLP, I: 28.5"

ST-XLT, I: 32.5"

Color shown: 10 White

NEW COLORS

SUMMER

White

Ciel

Fresco
Blue

See page 14-15 for additional colors

All Styles Main Fabric

71% Polyester

24% Rayon

5% Spandex twill



BUT153 Rally Top

3-pocket, banded V-neck, shoulder contrast badge loop, dyed-to-match zip chest pocket and patch pocket with pen slots, sleeve pocket, straight hem top

Sizes: XS-5XL, CB: 29"

Color shown: 40 Ciel

Pant shown: BUP602-40

BUP602 Rally Jogger

6-pocket elastic waistband with drawcord, front zip fly, L shaped welt pocket, double single cargo pocket with dyed-to-match zip pocket, back pocket, rib cuff jogger

Sizes: XS-5XL, I: 29"

SS-XLS, I: 27"

ST-XLT, I: 31"

Color shown: 40 Ciel

NEW COLORS

SPRING

Wine	Bahama
------	--------

SUMMER

White	Ciel
-------	------

See page 14-15 for additional colors

All Styles Main Fabric

71% Polyester

24% Rayon

5% Spandex twill

BUW881

Rally Warm-Up

4-pocket, rib trimmed mock neck, dyed-to-match zip placket, hidden zip chest pockets, kanga-style front pockets, cuff sleeve jacket

XS-5XL, CB: 29"

Color shown: 10 White

NEW COLORS

SPRING

Wine

Bahama

SUMMER

White

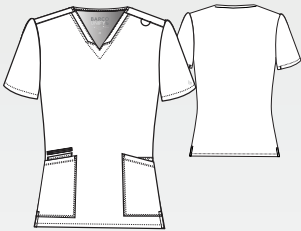
Ciel

See page 14-15 for additional colors



BUT167 Purpose Top

4-pocket, V-neckline, shoulder contrast badge loop, zip pocket PDA, tool strip detail at front pockets
Sizes: XXS-5XL, CB: 25.5"
Color shown: 23 Indigo



01 Black
08 New Royal
10 White •NEW SU
23 Indigo
40 Ciel •NEW SU
65 Wine •NEW SP
328 Bahama •NEW SP
905 Steel
1803 Dusty Red
2238 Fresco Blue •NEW SU

BUT163 Mission Top

1-pocket, Henley style neckline, dyed-to-match button placket, welt chest pocket, straight hem, tuck in style top
Sizes: XXS-5XL, CB: 26.5"
Color shown: 905 Steel



01 Black
08 New Royal
10 White •NEW SU
23 Indigo
40 Ciel •NEW SU
65 Wine •NEW SP
328 Bahama •NEW SP
905 Steel
1803 Dusty Red
2238 Fresco Blue •NEW SU

BUT156 Gratitude Top

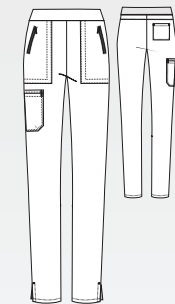
4-pocket Sweetheart neckline, princess seams, dyed-to-match front zip pocket, PDA, curved back hem top
Sizes: XXS-5XL, CB: 26"
Color shown: 1803 Dusty Red



01 Black
08 New Royal
10 White •NEW SU
23 Indigo
40 Ciel •NEW SU
65 Wine •NEW SP
328 Bahama •NEW SP
905 Steel
1803 Dusty Red
2238 Fresco Blue •NEW SU

BUP601 Purpose Pant

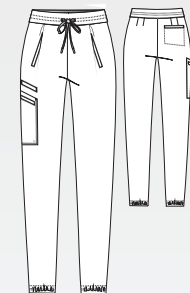
5-pocket, high-rise slim pant, flat front waistband with interior drawcord, dyed-to-match zip front pockets, double cargo PDA pocket, back pocket pant
Sizes: XXS-5XL, I: 30.5"
XXSP-XLP, I: 28.5"
ST-XLT, I: 32.5"
Color shown: 23 Indigo



01 Black
08 New Royal
10 White •NEW SU
23 Indigo
40 Ciel •NEW SU
65 Wine •NEW SP
328 Bahama •NEW SP
905 Steel
1803 Dusty Red
2238 Fresco Blue •NEW SU

BUP606 Mission Jogger

6-pocket, high rise jogger, elastic waistband with drawcord, front welt pockets, PDA welt, double single cargo pockets, elastic hem jogger
Sizes: XS-5XL, I: 29"
XSP-XLP, I: 27"
ST-XLT, I: 31"
Color shown: 1803 Dusty Red



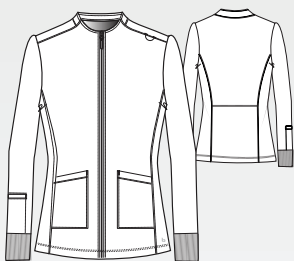
01 Black
08 New Royal
10 White •NEW SU
23 Indigo
40 Ciel •NEW SU
65 Wine •NEW SP
328 Bahama •NEW SP
905 Steel
1803 Dusty Red
2238 Fresco Blue •NEW SU

All Styles Main Fabric
71% Polyester/24% Rayon/5% Spandex twill



BUW884 Team Warm-Up

3-pocket low funnel neckline, princess seams, dyed-to-match zip placket, shoulder contrast badge loop, front pockets, welt sleeve PDA, back waist detail, rib cuff sleeves jacket
 Sizes: XS-5XL, CB: 26"
 Color shown: 905 Steel

**BUT153 Rally Top**

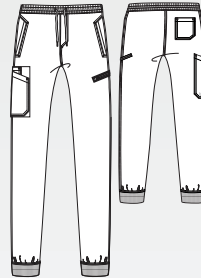
3-pocket, banded V-neck, shoulder contrast badge loop, dyed-to-match zip chest pocket and patch pocket with pen slots, sleeve pocket, straight hem top
 Sizes: XS-5XL, CB: 29"
 Color shown: 905 Steel

**BUW881 Rally Warm-Up**

4-pocket, rib trimmed mock neck, dyed-to-match zip placket, hidden zip chest pockets, kanga-style front pockets, cuff sleeve jacket
 Sizes: XS-5XL, CB: 29"
 Color shown: 905 Steel

**BUP602 Rally Jogger**

6-pocket elastic waistband with drawcord, front zip fly, L shaped welt pocket, double single cargo pocket with dyed-to-match zip pocket, back pocket, rib cuff jogger
 Sizes: XS-5XL, I: 29"
 SS-XLS, I: 27"
 ST-XLT, I: 31"
 Color shown: 23 Indigo

**01 Black****08 New Royal****10 White** •NEW SU**23 Indigo****40 Ciel** •NEW SU**65 Wine** •NEW SP**328 Bahama** •NEW SP**905 Steel****1803 Dusty Red****2238 Fresco Blue** •NEW SU**01 Black****08 New Royal****10 White** •NEW SU**23 Indigo****40 Ciel** •NEW SU**65 Wine** •NEW SP**328 Bahama** •NEW SP**905 Steel****01 Black****08 New Royal****10 White** •NEW SU**23 Indigo****40 Ciel** •NEW SU**65 Wine** •NEW SP**328 Bahama** •NEW SP**905 Steel****01 Black****08 New Royal****10 White** •NEW SU**23 Indigo****40 Ciel** •NEW SU**65 Wine** •NEW SP**328 Bahama** •NEW SP**905 Steel****All Styles Main Fabric**

71% Polyester / 24% Rayon / 5% Spandex twill



New Spring Colors

512 Brilliance

2253 Tropical Tide



GREY'S ANATOMY™

abc signature

© ABC Signature

PROFESSIONAL WEAR
BY BARCO

+ SPANDEX STRETCH

PRIMARY FABRIC CONTENT

74% Polyester | 23% Rayon | 3% Spandex Twill

New Summer Colors

2183 Lemon Glow

2188 Pink Lemonade

GREY'S ANATOMY™
SPANDEX STRETCH



Spandex-Stretch



Soil Release



Extreme Comfort



Moisture-Wicking

BARCO
Made to Matter

GREY'S ANATOMY™

abc signature
© ABC Signature

PROFESSIONAL WEAR
BY BARCO

+ SPANDEXSTRETCH

❖ NOT SOLD ON AMAZON

All Styles Main Fabric

74% Polyester

23% Rayon

3% Spandex twill

Spring
Delivery
12/1/22

GRST124 Carly Top

3-pocket, sport neck, rib knit front and back panels, exposed zipper pocket, shirt tail hem

Sizes: XXS - 3XL, CB: 25.5"

Color shown: 512 Brilliance

Pant shown: GRSP527-512

GRSP527 Carly Jogger

7-pocket, rib trim waistband, mid-rise, front slant pockets, double cargo pocket, zipper PDA, rib knit cuff jogger

Sizes: XXS - 3XL, I: 29"

XSP - XLP, I: 27"

XST - XLT, I: 31"

Color shown: 512 Brilliance

NEW COLORS

SPRING

Hunter

Brilliance

See page 32-35 for additional colors

GRST136 Capri Tuck-In Top

2-pocket, hourglass V-neck, front and back princess seams, chest and sleeve welt pockets, rib knit center back panel, high-low hem tuck-in top

Sizes: XXS - 3XL, CB: 25.5"

Color shown: 512 Brilliance

Knit Accent Content:

94% Polyester / 6% Spandex

NEW COLORS

SPRING

Wine

Bahama

Brilliance

SUMMER

White

Ciel

See page 32-35 for additional colors



GRST045 Serena Top

3-pocket, ribbed V-neck, PDA pocket, logo tape side slit detail, rib knit back insets with princess seam, straight hem

Sizes: XXS - 3XL, CB: 25.5"

Color shown: 512 Brilliance

Pant shown: GRSP526-512

GRSP526 Serena Pant

7-pocket, duchess knit waistband with drawcord, mid-rise, patch pockets, double cargo, slit hem, logo tape detail tapered leg

Sizes: XXS - 3XL, I: 30"

XSP - XLP, I: 28"

XST - XLT, I: 32"

Color shown: 512 Brilliance

NEW COLORS

SPRING

Hunter

Brilliance

See page 32-35 for additional colors

All Styles Main Fabric

74% Polyester

23% Rayon

3% Spandex twill



Anti-Microbial
Fabric Properties

GREY'S ANATOMY™

abc signature

© ABC Signature

PROFESSIONAL WEAR
BY BARCO

+ SPANDEXSTRETCH

❖ NOT SOLD ON AMAZON

All Styles Main Fabric

74% Polyester

23% Rayon

3% Spandex twill

Spring
Delivery
1/15/2023

GRST011 Emma Top

4-pocket, V-neck
with angled seams

Sizes: XXS - 5XL, CB: 26"

Color shown:

2253 Tropical Tide

GVST028

Bree Tuck-In Top

1-pocket, knit V-neck
with light grey badge loop
and shaped high-low hem

Sizes: XS - 3XL,

CB: 25.5"

Color shown:

2253 Tropical Tide

Knit Accent Content:

88% Polyester

12% Spandex

GRSP500 Kim Pant

3-pocket, logo plush
elasticback waistband,
zip cargo pocket

Sizes: XXS - 5XL, I: 31"

XXSP - 2XLP, I: 29"

XXST - XLT, I: 33.5"

Color shown:

2253 Tropical Tide

NEW COLOR

SPRING

Tropical Tide

See page 32-35 for additional colors



41435S Scuba Top

3-pocket, short sleeve V-neck
color block, with detail back
Sizes: XXS - 3XL, CB: 25.5"
Color shown: TTBM Tropical Tide/
Black/Moonstruck
Pant shown: GRSP537-2253

GRSP537 Eden Jogger

5-pocket, knit rib drawcord
waistband, zipper front pockets,
double single cargo,
ribbed cuff jogger
Sizes: XXS - 3XL, I: 29"
XXSP - XLP, I: 27"
XST - XLT, I: 31"
Color shown: 2253 Tropical Tide

NEW COLOR

SPRING

Tropical Tide

See page 32-35 for additional colors

All Styles Main Fabric

74% Polyester

23% Rayon

3% Spandex twill



GREY'S ANATOMY™

abc signature

© ABC Signature

PROFESSIONAL WEAR
BY BARCO

+ SPANDEX **STRETCH**

❖ NOT SOLD ON AMAZON

Fabric Content

50% Polyester

43% recycled

7% spandex

Spring
Delivery

12/1/22*

1/15/23**



GRST154-CHDE Cheetah Delight **NEW****

4-pocket, shaped V-neck with angled pockets and shoulder seams

Sizes: XS - 5XL, CB: 26"

Pant shown: GRSP527-01

Coordinating colors:



Black

White

Fabric Content

50% Polyester

43% recycled

7% spandex



GRST154-SPGR Spring Garden NEW*

4-pocket, shaped V-neck with angled pockets and shoulder seams

Sizes: XS - 5XL, CB: 26"

Pant shown: GRSP526-512

Coordinating colors:



Black White Brilliance Scarlet



GRST154-MOBL Morning Blossom NEW**

4-pocket, shaped V-neck with angled pockets and shoulder seams

Sizes: XS - 5XL, CB: 26"

Pant shown: GRSP537-2253

Coordinating colors:



Black White Steel Tropical Tide

GREY'S ANATOMY™

abc signature
© ABC Signature

PROFESSIONAL WEAR
BY BARCO

+ SPANDEXSTRETCH

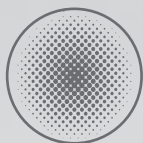
❖ NOT SOLD ON AMAZON

Fabric Content

74% Polyester
23% Rayon
3% Spandex twill

Knit Accents Content

94% Polyester
6% Spandex



**Anti-Microbial
Fabric Properties**



GRSW873 Gianna Warm-Up

5-pocket, round neck, zip front,
PDA and zipper pocket, rib back
panel, rib cuff warm-up
Sizes: XXS - 3XL, CB: 25.5"
Color shown: 37 Hunter
Pant shown: GRSP526-37

NEW COLORS

SPRING

Hunter

SUMMER

Olive

Moonstruck

Scarlet

See page 32-35 for additional colors

GRSW871 React Warm-Up

5-pocket knit stand collar
with zipper front, chest patch,
zipper welt pocket, chin guard,
and knit cuff warm-up
Sizes: XS - 5XL, CB: 29"
Color shown: 37 Hunter
Pant shown: GRSP550-37

NEW COLORS

SPRING

Hunter

SUMMER

Olive

See page 32-35 for additional colors





GREY'S ANATOMY™

abc signature
© ABC Signature

PROFESSIONAL WEAR
BY BARCO

+ SPANDEXSTRETCH

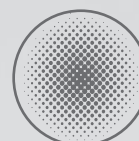
❖ NOT SOLD ON AMAZON

Fabric Content

74% Polyester
23% Rayon
3% Spandex twill

Knit Accents Content

94% Polyester
6% Spandex



Anti-Microbial
Fabric Properties

GRST079 Murphy Top

2-pocket, V-neck shaped chest pocket, zipper sleeve pocket top
Sizes: XS - 5XL, CB: 29"
Color shown: 37 Hunter
Pant shown: GRSP550-37

GRSP550 Murphy Jogger

5-pocket, rib knit with plush elastic embedded waistband, two-tone drawcord, front zipper fly, zipper front pockets, angled single double cargo pocket, single back pocket, rib knit cuff jogger
Sizes: XS - 5XL, I: 29"
XSS - 2XLS, I: 27"
XST - XLT, I: 31"
Color shown: 37 Hunter

NEW COLORS

SPRING

Hunter

SUMMER

Olive

Moonstruck

See page 32-35 for additional colors

GREY'S ANATOMY™

abc signature
© ABC Signature

PROFESSIONAL WEAR
BY BARCO

+ SPANDEXSTRETCH

❖ NOT SOLD ON AMAZON

All Styles Main Fabric

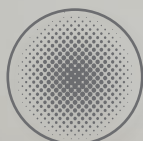
74% Polyester

23% Rayon

3% Spandex twill

Summer
Delivery

4/1/23



Anti-Microbial
Fabric Properties

GRST045 Serena Top

3-pocket, ribbed V-neck, PDA pocket,
logo tape side slit

detail, rib knit back insets with
princess seam, straight hem

Sizes: XXS - 3XL, CB: 25.5"

Color shown: 2188 Pink Lemonade

GRSP526 Serena Pant

7-pocket, duchess knit waistband with
drawcord, mid-rise, patch pockets,
double cargo, slit hem, logo tape detail
tapered leg

Sizes: XXS - 3XL, I: 30"

XSP - XLP, I: 28"

XST - XLT, I: 32"

Color shown: 2188 Pink Lemonade

NEW COLORS

SUMMER

Olive

Moonstruck

Scarlet

Pink
Lemonade

See page 32-35 for additional colors



GREY'S ANATOMY™

abc signature
© ABC Signature

PROFESSIONAL WEAR
BY BARCO

+ SPANDEX STRETCH

❖ NOT SOLD ON AMAZON

All Styles Main Fabric

74% Polyester

23% Rayon

3% Spandex twill

GRST124 Carly Top

3-pocket, sport neck, rib knit front and back panels, exposed zipper pocket, shirt tail hem

Sizes: XXS - 3XL, CB: 25.5"

Color shown: 2188 Pink Lemonade

GRSP527 Carly Jogger

7-pocket, rib trim waistband, mid-rise, front slant pockets, double cargo pocket, zipper PDA, rib knit cuff jogger

Sizes: XXS - 3XL, I: 29"

XSP - XLP, I: 27"

XST - XLT, I: 31"

Color shown: 2188 Pink Lemonade

NEW COLORS

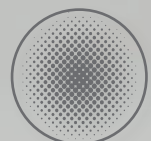
SUMMER

Olive

Scarlet

Pink
Lemonade

See page 32-35 for additional colors



Anti-Microbial
Fabric Properties



GREY'S ANATOMY™

abc signature

© ABC Signature

PROFESSIONAL WEAR

BY BARCO

+ SPANDEX **STRETCH**

❖ NOT SOLD ON AMAZON

All Styles Main Fabric

74% Polyester

23% Rayon

3% Spandex twill

Summer
Delivery

4/1/23



GRST011 Emma Top

4-pocket, V-neck with
angled seams

Sizes: XXS - 5XL, CB: 26"

Color shown: 2183 Lemon Glow

GRSP537 Eden Jogger

5-pocket, knit rib drawcord
waistband, zipper front pockets,
double single cargo, ribbed
cuff jogger

Sizes: XXS - 3XL, I: 29"

XXSP - XLP, I: 27"

XST - XLT, I: 31"

Color shown: 2183 Lemon Glow

NEW COLOR

SUMMER

Lemon Glow

See page 32-35 for additional colors

All Styles Main Fabric

74% Polyester

23% Rayon

3% Spandex twill

41435S Scuba Top

3-pocket, short sleeve V-neck
color block, with detail back

Sizes: XXS - 3XL, CB: 25.5"

Color shown: LGMW

Lemon Glow/Moonstruck/White

Pant shown: GRSP537-2183

NEW COLOR

SUMMER

Lemon Glow

See page 32-35 for additional colors



Fabric Content

50% Polyester

43% Recycled Polyester

7% Spandex

Summer
Delivery

4/1/23



GRST154-ZBTM Zebra Time **NEW**

4-pocket, shaped V-neck with angled pockets and shoulder seams

Sizes: XS - 5XL, CB: 26"

Pant shown: GRSP526-2188

Coordinating colors:



Black

New Royal

White

Lemon Glow

Pink
Lemonade



GRST154-CMGC Caribbean Magic **NEW**

4-pocket, shaped V-neck with angled pockets and shoulder seams

Sizes: XS - 5XL, CB: 26"

Pant shown: GRSP526-01

Coordinating colors:



Black

New Royal

White

Steel

Lemon Glow

Pink
Lemonade

GREY'S ANATOMY™

abc signature
© ABC Signature

PROFESSIONAL WEAR
BY BARCO

+ SPANDEX STRETCH

❖ NOT SOLD ON AMAZON

Fabric Content

50% Polyester

43% Recycled Polyester

7% Spandex



GRST154-CHPO Cheetah Pop **NEW**

4-pocket, shaped V-neck with angled pockets and shoulder seams

Sizes: XS - 5XL, CB: 26"

Pant shown: GRSP526-471

Coordinating colors:



Black

White

Moonstruck

GRST136 Capri Tuck-In Top
2-pocket, hourglass V-neck, front and back princess seams, chest and sleeve welt pockets, rib knit center back panel, high-low hem tuck-in top
Sizes: XXS - 3XL, CB: 25.5"
Color shown: 23 Indigo

Knit Accent Content:
94% Polyester / 6% Spandex



ANTIMICROBIAL

01 Black	
08 New Royal	
10 White	•NEW SU
23 Indigo	
40 Ciel	•NEW SU
65 Wine	•NEW SP
328 Bahama	•NEW SP
905 Steel	
512 Brilliance	•NEW SP

GVST028 Bree Tuck-In Top
1-pocket, knit V-neck with light grey badge loop and shaped high-low hem
Sizes: XS - 3XL, CB: 25.5"
Color shown: 39 Teal

Knit Accent Content:
88% Polyester / 12% Spandex



ANTIMICROBIAL

01 Black	
08 New Royal	
23 Indigo	
39 Teal	
40 Ciel	
65 Wine	
312 Olive	
328 Bahama	
471 Moonstruck	
905 Steel	
2253 Tropical Tide	•NEW 1/15

GRST124 Carly Top
3-pocket, sport neck, rib knit front and back panels, exposed zipper pocket, shirt tail hem
Sizes: XXS - 3XL, CB: 25.5"
Color shown: 40 Ciel

Knit Accent Content:
94% Polyester / 6% Spandex



ANTIMICROBIAL

01 Black	
08 New Royal	
10 White	
23 Indigo	
37 Hunter	•NEW SP
39 Teal	
40 Ciel	
65 Wine	
312 Olive	•NEW SU
328 Bahama	
600 Scarlet	•NEW SU
905 Steel	
512 Brilliance	•NEW SP
2188 Pink Lemonade	•NEW SU

GRST001 Kim Top
3-pocket, V-neck surplice with front and back princess seams, zip front pocket
Sizes: XXS - 5XL, CB: 26"
Color shown: 600 Scarlet



ANTIMICROBIAL

01 Black	G
08 New Royal	G
10 White	G
23 Indigo	G
39 Teal	G
40 Ciel	G
65 Wine	G
312 Olive	G
328 Bahama	G
471 Moonstruck	
600 Scarlet	G
905 Steel	

GRST045 Serena Top
3-pocket, ribbed V-neck, PDA pocket, logo tape side slit detail, rib knit back insets with princess seam, straight hem
Sizes: XXS - 3XL, CB: 25.5"
Color shown: 08 New Royal

Knit Accent Content:
94% Polyester / 6% Spandex



ANTIMICROBIAL

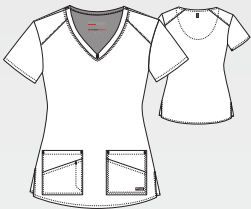
01 Black	
08 New Royal	
10 White	
23 Indigo	
37 Hunter	•NEW SP
39 Teal	
40 Ciel	
65 Wine	
312 Olive	•NEW SU
328 Bahama	
471 Moonstruck	•NEW SU
600 Scarlet	•NEW SU
905 Steel	
512 Brilliance	•NEW SP
2188 Pink Lemonade	•NEW SU

All Styles Main Fabric
74% Polyester / 23% Rayon / 3% Spandex twill

G denotes colors supported for Groups



GRST011 Emma Top
4-pocket, V-neck with angled seams
Sizes: *XXS - 5XL, CB: 26"*
Color shown: *39 Teal*



01 Black	G
08 New Royal	G
10 White	G
23 Indigo	G
37 Hunter	G
39 Teal	G
40 Ciel	G
65 Wine	G
312 Olive	G
328 Bahama	G
471 Moonstruck	
600 Scarlet	
905 Steel	
1277 Eggplant	G
2183 Lemon Glow	•NEW SU
2253 Tropical Tide	•NEW 1/15

GRSP526 Serena Pant
7-pocket, duchess knit waistband with drawcord, mid-rise, patch pockets, double cargo, slit hem, logo tape detail tapered leg
Sizes: *XXS - 3XL, I: 30"*
XSP - XLP, I: 28"
XST - XLT, I: 32"
Color shown: *905 Steel*

Knit Accents Content:
88% Polyester / 12% Spandex

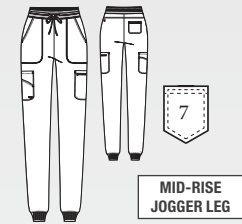


ANTIMICROBIAL

01 Black	
08 New Royal	
10 White	
23 Indigo	
37 Hunter	•NEW SP
39 Teal	
40 Ciel	
65 Wine	
312 Olive	•NEW SU
328 Bahama	
471 Moonstruck	•NEW SU
600 Scarlet	•NEW SU
905 Steel	
512 Brilliance	•NEW SP
2188 Pink Lemonade	•NEW SU

GRSP527 Carly Jogger
7-pocket, rib trim waistband, mid-rise, front slant pockets, double cargo pocket, zipper PDA, rib knit cuff jogger
Sizes: *XXS - 3XL, I: 29"*
XSP - XLP, I: 27"
XST - XLT, I: 31"
Color shown: *40 Ciel*

Knit Accents Content:
94% Polyester / 6% Spandex

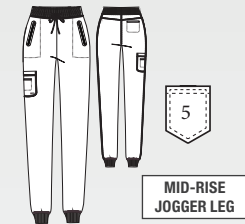


ANTIMICROBIAL

01 Black	
08 New Royal	
10 White	
23 Indigo	
37 Hunter	•NEW SP
39 Teal	
40 Ciel	
65 Wine	
312 Olive	•NEW SU
328 Bahama	
600 Scarlet	•NEW SU
905 Steel	
512 Brilliance	•NEW SP
2188 Pink Lemonade	•NEW SU

GRSP537 Eden Jogger
5-pocket, knit rib drawcord waistband, zipper front pockets, double single cargo, ribbed cuff jogger
Sizes: *XXS - 3XL, I: 29"*
XXSP - XLP, I: 27"
XST - XLT, I: 31"
Color shown: *312 Olive*

Knit Accents Content:
94% Polyester / 6% Spandex



01 Black	G
08 New Royal	G
10 White	G
23 Indigo	G
39 Teal	G
40 Ciel	G
65 Wine	G
312 Olive	G
328 Bahama	G
471 Moonstruck	
905 Steel	G
2183 Lemon Glow	•NEW SU
2253 Tropical Tide	•NEW 1/15

G denotes colors supported for Groups

All Styles Main Fabric
74% Polyester / 23% Rayon / 3% Spandex twill



GRSP500 Kim Pant

3-pocket, logo plush elastic back waistband, zip cargo pocket
 Sizes: *XXS - 5XL, I: 31"*
XXSP - 2XLP, I: 29"
XXST - XLT, I: 33.5"
 Color shown: 600 Scarlet

Knit Accents Content:
 88% Polyester / 12% Spandex



01 Black	G
08 New Royal	G
10 White	G
23 Indigo	G
37 Hunter	G
39 Teal	G
40 Ciel	G
65 Wine	G
312 Olive	G
328 Bahama	G
471 Moonstruck	
600 Scarlet	
905 Steel	G
1277 Eggplant	
2253 Tropical Tide	•NEW 1/15

GVSP509 Harper Pant

3-pocket, mid-rise cargo with knit elastic waist and heather drawcord
 Sizes: *XXS - 5XL, I: 30"*
XXSP - XLP, I: 28"
XXST - XLT, I: 33.5"
 Color shown: 08 New Royal

Knit Accents Content:
 88% Polyester / 12% Spandex



01 Black	
08 New Royal	
10 White	
23 Indigo	
39 Teal	
40 Ciel	
65 Wine	
312 Olive	
328 Bahama	
471 Moonstruck	
905 Steel	

GRSW017 Millie Jacket

3-pocket, rib neck, zip front placket, PDA and zip pocket, princess seamed front, back seams and ribbed cuff
 Sizes: *XS - 3XL, CB: 26"*
 Color shown: 65 Wine

Knit Accent Content:
 94% Polyester / 6% Spandex



01 Black	G
08 New Royal	G
10 White	G
23 Indigo	G
39 Teal	G
40 Ciel	G
65 Wine	G
312 Olive	G
328 Bahama	G
905 Steel	G

❖ NOT SOLD ON AMAZON

GRSW873 Gianna Warm-Up

5-pocket, round neck, zip front, PDA and zipper pocket, rib back panel, rib cuff warm-up
 Sizes: *XXS - 3XL, CB: 25.5"*
 Color shown: 23 Indigo

Knit Accent Content:
 94% Polyester / 6% Spandex

**ANTIMICROBIAL**

01 Black	
08 New Royal	
10 White	
23 Indigo	
37 Hunter	•NEW 1/15
39 Teal	
40 Ciel	
65 Wine	
312 Olive	•NEW SU
328 Bahama	
471 Moonstruck	•NEW SU
600 Scarlet	•NEW SU
905 Steel	

All Styles Main Fabric

74% Polyester / 23% Rayon / 3% Spandex twill

G denotes colors supported for Groups

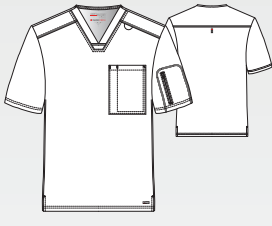


❖ NOT SOLD ON AMAZON

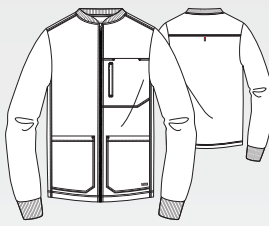
GRST009 Wesley Top
3-welt pocket, sport V-neck
with angled back yoke
Sizes: XS - 5XL, CB: 29"
Color shown: 37 Hunter



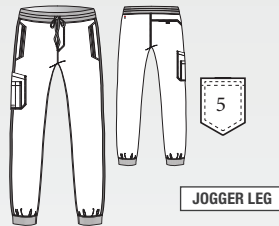
GRST079 Murphy Top
2-pocket, V-neck shaped chest
pocket, zipper sleeve pocket top
Sizes: XS - 5XL, CB: 29"
Color shown: 23 Indigo



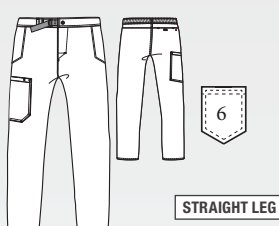
GRSW871 React Warm-Up
5-pocket knit stand collar with
zipper front, chest patch, zipper
welt pocket, chin guard, and knit
cuff warm-up
Sizes: XS - 5XL, CB: 29"
Color shown: 905 Steel
Knit Accents Content:
94% Polyester / 6% Spandex



GRSP550 Murphy Jogger
5-pocket, rib knit with plush elastic
embedded waistband, two-tone
drawcord, front zipper fly, zipper
front pockets, angled single double
cargo pocket, single back pocket,
rib knit cuff jogger
Sizes: XS - 5XL, I: 29"
XSS - 2XLS, I: 27"
XST - XLT, I: 31"
Color shown: 40 Ciel
Knit Accents Content:
94% Polyester / 6% Spandex



GRSP507 Wesley Pant
4-pocket, belt closure waist
with zip fly cargo
Sizes: XS - 5XL, I: 32"
Color shown: 328 Bahama



ANTIMICROBIAL

ANTIMICROBIAL

ANTIMICROBIAL

01 Black	G
08 New Royal	G
10 White	G
23 Indigo	G
37 Hunter	G
40 Ciel	G
65 Wine	G
328 Bahama	G
905 Steel	G

01 Black	
08 New Royal	
10 White	
23 Indigo	
37 Hunter	•NEW 1/15
39 Teal	
40 Ciel	
65 Wine	
312 Olive	•NEW SU
328 Bahama	
471 Moonstruck	•NEW SU
905 Steel	

01 Black	G
08 New Royal	G
10 White	G
23 Indigo	G
37 Hunter	•NEW 1/15
39 Teal	
40 Ciel	G
65 Wine	G
312 Olive	•NEW SU
328 Bahama	G
905 Steel	

01 Black	G
08 New Royal	
10 White	
23 Indigo	
37 Hunter	•NEW 1/15
39 Teal	
40 Ciel	
65 Wine	
312 Olive	•NEW SU
328 Bahama	
471 Moonstruck	•NEW SU
905 Steel	

01 Black	G
08 New Royal	G
10 White	G
23 Indigo	G
37 Hunter	G
40 Ciel	G
65 Wine	G
328 Bahama	G
905 Steel	G

G denotes colors supported for Groups

All Styles Main Fabric
74% Polyester / 23% Rayon / 3% Spandex twill



New Spring Color

2144 Rosy Coral

GREY'S ANATOMY™

abc signature

© ABC Signature

PROFESSIONAL WEAR
BY BARCO

iMPACT

PRIMARY FABRIC CONTENT

74% Polyester | 23% Rayon | 3% Spandex

New Summer Color

2255 Mint Cream



GREY'S ANATOMY™
IMPACT



Spandex-Stretch



Soil Release



Extreme Comfort



Moisture-Wicking

BARCO
Made to Matter

GREY'S ANATOMY™

abc signature
© ABC Signature

PROFESSIONAL WEAR
BY BARCO

iMPACT

Fabric Content

74% Polyester
23% Rayon
3% Spandex

Spring
Delivery

12/1/22



7188 Elevate Top

3-pocket, crossover V-neck with Barco Tape detailing at front and back seaming, including 2 patch pockets with utility pocket

Sizes: XXS - 3XL, CB: 25.5"

Color shown: 2144 Rosy Coral

7228 Elevate Pant

6-pocket, mid-rise straight leg cargo with hidden welt pocket, knit comfort elastic waistband, grommet eyes with titanium colored tipped ties, back vents at hem and Barco Tape* detailing

Sizes: XXS - 3XL, I: 31.5"

XXSP - XLP, I: 29.5"

XXST - XLT, I: 33.5"

Color shown: 2144 Rosy Coral

NEW COLOR

SPRING

Rosy Coral

See page 41 for additional colors



GREY'S ANATOMY™

abc signature

© ABC Signature

PROFESSIONAL WEAR

BY BARCO

iMPACT

Fabric Content

74% Polyester

23% Rayon

3% Spandex

GIT033 Moto Top

3-pocket, shaped V-neck
moto inspired pintucks,
front and back princess
seams, Barco Tape details

Sizes: XXS - 3XL, CB: 25.5"

Color shown: 2144 Rosy Coral

GIP507 Moto Pant

6-pocket, flat front, drawcord elastic
back waistband, mid-rise, slant front
and back pockets, double cargo,
moto inspired pintuck with Barco
Tape details tapered leg pant

Sizes: XXS - 3XL, I: 30.5"

XSP - XLP, I: 28.5"

XST - XLT, I: 32.5"

Color shown: 2144 Rosy Coral

NEW COLOR

SPRING

Rosy Coral

See page 41 for additional colors



Fabric Content

74% Polyester

23% Rayon

3% Spandex

Summer
Delivery

4/1/23



7188 Elevate Top

3-pocket, crossover V-neck with Barco Tape detailing at front and back seaming, including 2 patch pockets with utility pocket

Sizes: XXS - 3XL, CB: 25.5"

Color shown: 2255 Mint Cream

7228 Elevate Pant

6-pocket, mid-rise straight leg cargo with hidden welt pocket, knit comfort elastic waistband, grommet eyes with titanium colored tipped ties, back vents at hem and Barco Tape* detailing

Sizes: XXS - 3XL, I: 31.5"

XXSP - XLP, I: 29.5"

XXST - XLT, I: 33.5"

Color shown: 2255 Mint Cream

NEW COLOR

SUMMER

Mint Cream

See page 41 for additional colors



GIP507 Moto Pant

6-pocket, flat front, drawcord elastic back waistband, mid-rise, slant front and back pockets, double cargo, moto inspired pintuck with Barco Tape details tapered leg pant
 Sizes: XXS - 3XL, I: 30.5"
 XSP - XLP, I: 28.5"
 XST - XLT, I: 32.5"
 Color shown: 01 Black

Knit Accent Content:
 88% Polyester / 12% Spandex

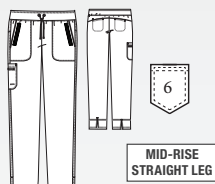


01 Black
08 New Royal
23 Indigo
65 Wine
312 Olive
905 Steel
2144 Rosy Coral •NEW SP

7228 Elevate Pant

6-pocket, mid-rise straight leg cargo with hidden welt pocket, knit comfort elastic waistband, grommet eyes with titanium colored tipped ties, back vents at hem and Barco Tape* detailing
 Sizes: XXS - 3XL, I: 31.5"
 XXSP - XLP, I: 29.5"
 XXST - XLT, I: 33.5"
 Color shown: 40 Ciel

Knit Accent Content:
 88% Polyester / 12% Spandex



01 Black
08 New Royal
23 Indigo
37 Hunter
40 Ciel
65 Wine
312 Olive
328 Bahama
905 Steel
2144 Rosy Coral •NEW SP
2255 Mint Cream •NEW SU

GIT033 Moto Top

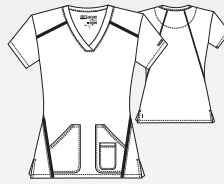
3-pocket, shaped V-neck moto inspired pintucks, front and back princess seams, Barco Tape details
 Sizes: XXS - 3XL, CB: 25.5"
 Color shown: 65 Wine



01 Black
08 New Royal
23 Indigo
65 Wine
312 Olive
905 Steel
2144 Rosy Coral •NEW SP

7188 Elevate Top

3-pocket, crossover V-neck with Barco Tape* detailing at front and back seaming, including 2 patch pockets with utility pocket
 Sizes: XXS - 3XL, CB: 25.5"
 Color shown: 328 Bahama



01 Black
08 New Royal
23 Indigo
37 Hunter
40 Ciel
65 Wine
312 Olive
328 Bahama
905 Steel
2144 Rosy Coral •NEW SP
2255 Mint Cream •NEW SU

7187 Harmony Top

3-pocket, V-neck with Barco Tape* detailing, aerodynamic shaped hem, titanium colored utility ring and t-back seaming
 Sizes: XXS - 3XL, CB: 26"
 Color shown: 23 Indigo

Inside Sleeve Space dye knit:
 49% Polyester/45% Nylon
 6% Spandex



01 Black
08 New Royal
23 Indigo
40 Ciel
65 Wine
328 Bahama
905 Steel

All Styles Main Fabric
 74% Polyester/23% Rayon/3% Spandex



GREY'S ANATOMY™

abc signature

©ABC Signature

PROFESSIONAL WEAR
BY BARCO

Signature



GREY'S ANATOMY™

abc signature

© ABC Signature

PROFESSIONAL WEAR
BY BARCO

Signature

TAILORED SOPHISTICATION



360° Spandex-Stretch



Wrinkle Release



Super-Soft Touch



Luxurious Appeal

PRIMARY FABRIC CONTENT

71% Polyester | 24% Rayon | 5% Spandex

BARCO®
Made to Matter

GNT086 London Top
 4-pocket, zipper V-neck,
 zipper PDA, pen slot pocket
 with shirt tail hem
Sizes: XXS - 3XL, CB: 25.5"
Color shown:
 1560 Shadow Shade



GNT019 Astra Top
 3-extra deep pockets, V-neck
 with laced sleeve detail,
 high-low hem rounded back
Sizes: XXS - 3XL, CB: 26"
Color shown: 65 Wine



2121 Callie Top
 2-pocket, notch neck with
 tab detail and pen slot,
 split needle, front and
 back yoke
Sizes: XXS - 5XL, CB: 26"
Color shown: 23 Indigo



2407 Bella Warm-Up
 2-pocket, jewel neck snap
 front with princess seams,
 banded sides, back detail,
 and knit sock cuffs
Sizes: XXS - 5XL, CB: 27"
Color shown: 08 New Royal
Knit sock cuff:
 100% Polyester



ANTIMICROBIAL

01 Black
08 New Royal
23 Indigo
1560 Shadow Shade
1561 Wine Shade

01 Black
08 New Royal
10 White
40 Ciel
65 Wine
142 Graphite
312 Olive
328 Bahama

01 Black
08 New Royal
23 Indigo
142 Graphite

01 Black
08 New Royal
23 Indigo
142 Graphite



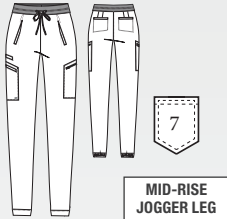
WHILE SUPPLIES LAST

All Styles Main Fabric
 71% Polyester/24% Rayon/5% Spandex



GNP553 London Jogger

7-pocket, shades contrast waistband, mid-rise, double cargo, trouser jogger pant
Sizes: XXS - 3XL, I: 28.5"
XSP - XLP, I: 26.5"
XST - XLT, I: 30.5"
Color shown: RSS New Royal/
Shadow Shade

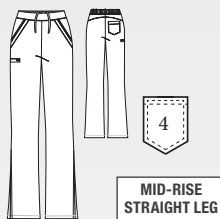


ANTIMICROBIAL

BHS Black
RSS New Royal
IDS Indigo
1560 Shadow Shade
1561 Wine Shade

GNP508 Astra Pant

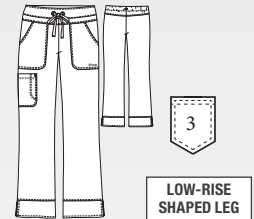
4-pocket, flat front with inside drawcord, elastic back, side entry and welt cargo pockets, with back spade pocket and straight leg
Sizes: XXS - 3XL, I: 31.5"
XSP - XLP, I: 29.5"
XST - XLT, I: 33.5"
Color shown: 312 Olive



01 Black
08 New Royal
10 White
40 Ciel
65 Wine
142 Graphite
312 Olive
328 Bahama

2207 Callie Pant

3-pocket, cargo, low-rise shaped leg, tie front and elastic back
Sizes: XXS - 5XL, I: 31.5"
XXSP - 2XLP, I: 29.5"
XXST - XLT, I: 33.5"
Color shown: 23 Indigo



01 Black
08 New Royal
23 Indigo
142 Graphite

WHILE SUPPLIES LAST

All Styles Main Fabric
71% Polyester / 24% Rayon / 5% Spandex



GREY'S ANATOMY™

abc signature

© ABC Signature

PROFESSIONAL WEAR
BY BARCO



GREY'S ANATOMY™

abc signature

©ABC Signature

PROFESSIONAL WEAR

BY BARCO

AUTHENTIC STYLE



Moisture-Wicking



Easy Care



Super-Soft Touch



All-Day Freshness

PRIMARY FABRIC CONTENT

77% Polyester | 23% Rayon

BARCO®
Made to Matter

Fabric Content

77% Polyester
 23% Rayon

Knit Accents Content

94% Polyester
 6% Spandex

Zipper

100% Nylon

**AVAILABLE
 COLORS**

01 Black

10 White

08 New Royal

23 Indigo

37 Hunter

39 Teal

40 Ciel

65 Wine

328 Bahama

471 Moonstruck

905 Steel



GRT049 Kira Top

4-pocket, knit V-neck, "love" zipper pocket, "love" inside neck tape, knit sleeve hem, front and back princess seams top

Sizes: XS - 3XL, CB: 25.5"

Color shown: 905 Steel

Pant shown: GRP534-905

GRP534 Kira Jogger

5-pocket, tunnel drawcord waistband, mid-rise, double cargo with zipper pocket, tailored side seam knit cuff jogger

Sizes: XS - 3XL, I: 28"

XSP - XLP, I: 26"

XST - XLT, I: 30"

Color shown: 905 Steel

Fabric Content
 77% Polyester
 23% Rayon

GRT091 Evan Top
 2-pocket, lapover V-neck,
 contrast badge loop at left
 shoulder, chest pocket with
 pen slot, single sleeve pocket
 with side vents
Sizes: XS - 5XL, CB: 29"
Color shown: 549 Purple Rain

GRP558 Evan Pant
 5-pocket, full elastic waistband
 with contrast drawcord, front
 zip fly, both side entry hand
 pockets, one right back patch
 pocket, and one single double
 left cargo pocket
Sizes: XS - 5XL, I: 32"
XST - XLT, I: 34"
XSS-XLS, I: 30"
Color shown: 549 Purple Rain



AVAILABLE
 COLORS

01 Black
10 White
08 New Royal
23 Indigo
37 Hunter
39 Teal
40 Ciel
65 Wine
328 Bahama
503 Galaxy
549 Purple Rain
905 Steel
910 Granite

GRT049 Kira Top

4-pocket, knit V-neck, love zipper pocket, love inside neck tape, knit sleeve hem, front and back princess seams top
Sizes: XS - 3XL, CB: 25.5"
Color shown: 65 Wine

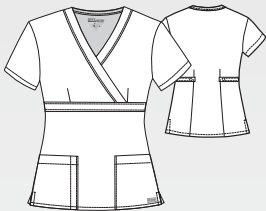
Zipper:
100% Nylon



01 Black
08 New Royal
10 White
23 Indigo
37 Hunter
39 Teal
40 Ciel
65 Wine
328 Bahama
471 Moonstruck
905 Steel

4153 Riley Top

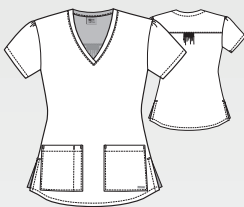
3-pocket, mock wrap with tab back
Sizes: XXS - 5XL, CB: 25"
Color shown: 23 Indigo



01 Black
08 New Royal
23 Indigo
37 Hunter
40 Ciel
905 Steel

71166 Aubrey Top

2-pocket, V-neck with pen slot and Shirred back yoke
Sizes: XS - 5XL, CB: 26"
Color shown: 37 Hunter



01 Black
08 New Royal
23 Indigo
37 Hunter
40 Ciel
65 Wine
600 Scarlet
905 Steel
910 Granite

41423 Cora Top

4-pocket, crossover V-neck with side panels, zipper pocket and tulip sleeve detail, fitted back
Sizes: XXS - 5XL, CB: 25.5"
Color shown: 39 Teal



01 Black	G
08 New Royal	G
10 White	G
23 Indigo	G
37 Hunter	G
39 Teal	G
40 Ciel	G
65 Wine	G
328 Bahama	G
471 Moonstruck	
503 Galaxy	
549 Purple Rain	G
600 Scarlet	
905 Steel	G
910 Granite	

All Styles Main Fabric
77% Polyester/23% Rayon

G denotes colors supported for Groups



4277 Mia Pant

6-pocket, flat front, knit elastic back waistband with drawcord, double cargo, back pockets mid-rise

Sizes: XXS - 5XL, I: 31.5"

XXSP - 2XLP, I: 29.5"

XXST - XLT, I: 33.5"

Color shown: 503 Galaxy

Knit Accents Content:

88% Polyester/12% Spandex

**GRP534 Kira Jogger**

5-pocket, tunnel drawcord waistband, mid-rise, double cargo with zipper pocket, tailored side seam knit cuff jogger

Sizes: XS - 3XL, I: 28"

XSP - XLP, I: 26"

XST - XLT, I: 30"

Color shown: 08 New Royal

Knit Accents Content:

94% Polyester / 6% Spandex

**4275 Aubrey Pant**

3-pocket, logo plush elastic waistband pant with drawcord

Sizes: XXS - 5XL, I: 31"

XXSP - XLP, I: 29"

XXST - XLT, I: 33"

Color shown: 65 Wine

**4232 Riley Pant**

5-pocket, tie front elastic back, mid-rise flare leg

Sizes: XXS - 5XL, I: 31.5"

XXSP - 2XLP, I: 29.5"

XXST - XLT, I: 33.5"

Color shown: 08 New Royal



01 Black	G
08 New Royal	G
10 White	G
23 Indigo	G
37 Hunter	G
39 Teal	G
40 Ciel	G
65 Wine	G
328 Bahama	G
471 Moonstruck	
503 Galaxy	
549 Purple Rain	G
600 Scarlet	
905 Steel	G
910 Granite	

01 Black	
08 New Royal	
10 White	
23 Indigo	
37 Hunter	
39 Teal	
40 Ciel	
65 Wine	
328 Bahama	
471 Moonstruck	
905 Steel	

01 Black	
08 New Royal	
23 Indigo	
37 Hunter	
40 Ciel	
65 Wine	
328 Bahama	
905 Steel	
910 Granite	

01 Black	
08 New Royal	
23 Indigo	
37 Hunter	
40 Ciel	
905 Steel	

G denotes colors supported for Groups

All Styles Main Fabric
77% Polyester/23% Rayon



GRP560 Lilah Maternity Pant

1-pocket, knit maternity waistband with single cargo pocket pant
Sizes: XS - 2XL, I: 31"
Color shown: 23 Indigo

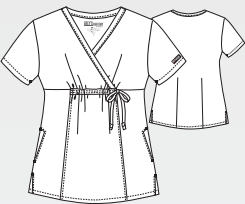
Knit Accents Content:
88% Polyester/12% Spandex



01 Black
08 New Royal
23 Indigo
905 Steel

GRT094 Lilah Maternity Top

2-pocket, mock wrap empire line top with tie and fitted back
Sizes: XS - 2XL, CB:27"
Color shown: 23 Indigo



01 Black
08 New Royal
23 Indigo
905 Steel

4450 Jamie Warm-Up

4-pocket, round neck warm-up with logo snaps and dyed-to-match knit cuffs with fitted back
Sizes: XS - 5XL, CB:28"
Color shown: 10 White

Knit Accents Content:
100% Polyester



01 Black
08 New Royal
10 White
23 Indigo
37 Hunter
39 Teal
40 Ciel
65 Wine
328 Bahama
503 Galaxy
549 Purple Rain
905 Steel
910 Granite

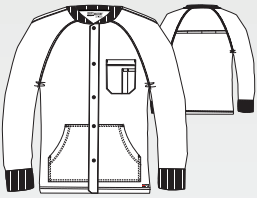
All Styles Main Fabric
77% Polyester/23% Rayon



0406 Cole Warm-Up

5-pocket, raglan warm-up
with rib cuff and collar,
kanga pockets, open back
yoke vent and snap front
Sizes: XS - 5XL, CB: 29"
Color shown: 23 Indigo

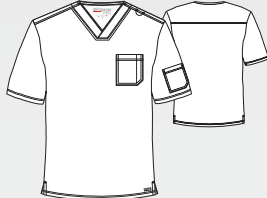
Knit Accents Content:
60% Polyester/40% Cotton



GRT091 Evan Top

2-pocket, lapover V-neck,
contrast badge loop at
left shoulder, chest pocket
with pen slot, single sleeve
pocket with side vents
Sizes: XS - 5XL, CB:29"

Color shown:
549 Purple Rain



GRP558 Evan Pant

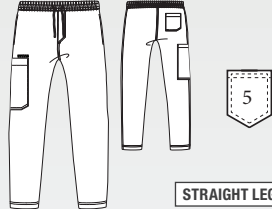
5-pocket, full elastic waistband with contrast drawcord, front zip fly, both side entry hand pockets, one right back patch pocket, and one single double left cargo pocket

Sizes: XS - 5XL, I: 32"

XST - XLT, l: 34"

XSS-XLS, 1: 30"

Color shown: 910 Granite

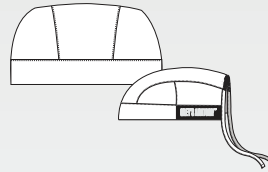


GRA831 Giving Scrub Cap

Unisex fitted cap with plush logo
elastic side and self tie back

One size

Color shown: 37 Hunter

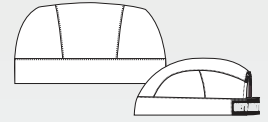


GRA830 Heart Scrub Cap

Unisex fitted cap with plush logo elastic back

One size

Color shown: 08 New Royal



WHILE SUPPLIES LAST

01 Black

23 Indigo

905 Steel

01 Black	G
08 New Royal	G
10 White	G
23 Indigo	G
37 Hunter	G
39 Teal	G
40 Ciel	G
65 Wine	G
328 Bahama	G
503 Galaxy	
549 Purple Rain	G
905 Steel	G
910 Granite	

01 Black	G
08 New Royal	G
10 White	G
23 Indigo	G
37 Hunter	G
39 Teal	G
40 Ciel	G
65 Wine	G
328 Bahama	G
503 Galaxy	
549 Purple Rain	G
905 Steel	G
910 Granite	

01 Black

08 New Royal

23 Indigo

37 Hunter

905 Steel

01 Black

08 New Royal

23 Indigo

37 Hunter

905 Steel

G denotes colors supported for Groups

All Styles Main Fabric
77% Polyester/23% Rayon



New
Spring
Color

2185 Dark Jade

BARCO
one
heart • purpose • life

PRIMARY FABRIC CONTENT

50% Polyester | 43% Recycled Polyester | 7% Spandex

New Summer Color

2096 Lavender Winds



5 Recycled Bottles
Per Garment



4-Way Stretch



Moisture-Wicking



Anti-Static

BARCO
Made to Matter

BARCO. ONE

Fabric Content

50% Polyester

43% Recycled Polyester

7% Spandex

Knit Accents Content

88% Polyester

12% Spandex

Spring
Delivery
12/1/22



BOT142 Uplift Top

2-pocket, scoop neck, perforated chest patch pocket, sleeve zipper pocket, perforated sleeves, knit and perforated body panels, curved seaming, high-low hem tuck-in top

Sizes: XXS - 5XL, CB: 26"

Color shown: 2185 Dark Jade

BOP597 Uplift Pant

5-pocket, knit waistband with drawcord, front and back welt pockets, single double cargo pocket, perforated hip and leg panels.

Sizes: XXS - 5XL, I: 30"

XXSP - XLP, I: 28"

XXST - XLT, I: 32"

Color shown: 2185 Dark Jade

NEW COLORS

SPRING

Wine	Bahama	Dark Jade
------	--------	-----------

See page 66-69 for additional colors

Fabric Content

50% Polyester
43% Recycled Polyester
7% Spandex

5105 Racer Top

4-pocket, V-neck with princess seaming and perforated panel details in front and back
Sizes: XXS - 5XL, CB: 25.5"
Color shown: 2185 Dark Jade

BOP513 Boost Jogger

3-pocket, double elastic waist with drawcord and perforated blocked detail leg
Sizes: XXS - 5XL, I: 30.5"
XXSP - XLP, I: 28.5"
XXST - XLT, I: 33.5"
Color shown: 2185 Dark Jade

NEW COLOR

SPRING

Dark Jade

See page 66-69 for additional colors



Fabric Content

50% Polyester

43% Recycled Polyester

7% Spandex

Spring
Delivery

12/1/22*

1/15/23**



5107-TRSC Tropical Scents NEW**

4-pocket, V-neck with front and back princess seams

Sizes: XXS - 5XL, CB: 25.5"

Pant shown: BOP513-23

Coordinating colors:



Black

New Royal

White

Indigo

Wine



5107-PTRA Petal Radiance NEW*

4-pocket, V-neck with front and back princess seams

Sizes: XXS - 5XL, CB: 25.5"

Pant shown: BOP513-2185

Coordinating colors:



Black

New Royal

Indigo

Ciel

Dark Jade

Fabric Content
 50% Polyester
 43% Recycled Polyester
 7% Spandex



5107- PYPL Python Play NEW*

4-pocket, V-neck with front and back princess seams

Sizes: *XXS - 5XL, CB: 25.5"*

Pant shown: *BOP597-2185*

Coordinating colors:



Black

White

Dark Jade

Fabric Content

50% Polyester

43% Recycled Polyester

7% Spandex

Spring
 Delivery
 12/1/22



BOW883 Amplify Warm-Up New

3-pocket bomber, knit neck and knit cuffs on raglan sleeves, 2-way zipper with cover, secure zip closure shoulder pocket with pen slots warm-up

Sizes: XS - 5XL, CB: 28"

Color shown: 23 Indigo

NEW COLORS

SPRING

Black	Indigo
-------	--------

0217 Men's Amplify Pant

7-pocket, elastic waist cargo with drawcord, back perforated knee panels and functional zip fly front with gusseted inseam

Sizes: XS - 5XL, I: 32"

ST - XLT, I: 34"

XSS - 3XLS, I: 30"

Color shown: 23 Indigo



BOP520 Men's Vortex Pant

6-pocket, drawcord full elastic waistband, single zip double cargo, inside coin pocket and perforated details jogger

Sizes: XS - 5XL, I: 30"

ST - XLT, I: 32"

XSS - 3XLS, I: 28"

Color shown: 23 Indigo

Knit Accents Content:

94% Polyester/6% Spandex

NEW COLORS

SPRING

Wine

Bahama

SUMMER

Hunter

Cobalt

See page 69 for additional colors

BARCO
one
heart • purpose • life

Fabric Content

50% Polyester

43% Recycled Polyester

7% Spandex



0115 Men's Amplify Top

5-pocket V-neck with raglan sleeve details, hidden pocket and chest pocket with a secure zip media pocket

Sizes: XS - 5XL, CB: 30"

Color shown: 23 Indigo

All zippers are black

0217 Men's Amplify Pant

7-pocket, elastic waist cargo with drawcord, back perforated knee panels and functional zip fly front with gusseted inseam

Sizes: XS - 5XL, I: 32"

ST - XLT, I: 34"

XSS - 3XLS, I: 30"

Color shown: 23 Indigo

AVAILABLE COLORS

Black

New Royal

Indigo

Hunter

Teal

Ciel

Wine

Cobalt

Bahama

Steel



Fabric Content

50% Polyester
43% Recycled Polyester
7% Spandex

Knit Accents Content

88% Polyester
12% Spandex

Summer
Delivery
4/1/23



BOT142 Uplift Top

2-pocket, scoop neck, perforated chest patch pocket, sleeve zipper pocket, perforated sleeves, knit and perforated body panels, curved seaming, high-low hem tuck-in top
Sizes: XXS - 5XL, CB: 26"
Color shown: 2096 Lavender Winds

BOP597 Uplift Pant

5-pocket, knit waistband with drawcord, front and back welt pockets, single double cargo pocket, perforated hip and leg panels.
Sizes: XXS - 5XL, I: 30"
XXSP - XLP, I: 28"
XXST - XLT, I: 32"
Color shown: 2096 Lavender Winds

NEW COLOR

SUMMER

Lavender Winds

See page 66-69 for additional colors



Fabric Content

50% Polyester

43% Recycled Polyester

7% Spandex



5105 Racer Top

4-pocket, V-neck with princess seaming and perforated panel details in front and back

Sizes: XXS - 5XL, CB: 25.5"

Color shown: 2096 Lavender Winds

B0P513 Boost Jogger

3-pocket, double elastic waist with drawcord and perforated blocked detail leg

Sizes: XXS - 5XL, I: 30.5"

XXSP - XLP, I: 28.5"

XXST - XLT, I: 33.5"

Color shown:

2096 Lavender Winds

NEW COLOR

SUMMER

Lavender Winds

See page 66-69 for additional colors



Fabric Content

50% Polyester

43% Recycled Polyester

7% Spandex

Summer
 Delivery

4/1/23



5107-FBLO Floral Blooms NEW

4-pocket, V-neck with front and back princess seams

Sizes: XXS - 5XL, CB: 25.5"

Pant shown: 5206-10

Coordinating colors:



New Royal

White

Teal

Wine

Lavender
 Winds

Fabric Content

50% Polyester
 43% Recycled Polyester
 7% Spandex



5107-ARTO Artist Touch NEW

4-pocket, V-neck with front and back princess seams

Sizes: XXS - 5XL, CB: 25.5"

Pant shown: BOP513-10

Coordinating colors:



Black

White



5107-MYFL Mystic Flower NEW

4-pocket, V-neck with front and back princess seams

Sizes: XXS - 5XL, CB: 25.5"

Pant shown: BOP513-2096

Coordinating colors:



Black

New Royal

White

Indigo

Teal

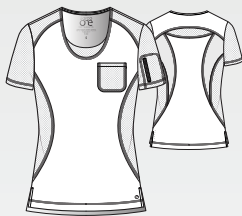
Ciel

Lavender
Winds

BOT142 Uplift Top

2-pocket, scoop neck, perforated chest patch pocket, sleeve zipper pocket, perforated sleeves, knit and perforated body panels, curved seaming, high-low hem tuck-in top
Sizes: XXS - 5XL, CB: 26"
Color shown: 2096 Lavender Winds

Knit Accents Content:
88% Polyester/12% Spandex



01 Black	
08 New Royal	
23 Indigo	
65 Wine	•NEW 1/15
328 Bahama	•NEW 1/15
905 Steel	
2185 Dark Jade	•NEW SP
2096 Lavender Winds	•NEW SU

5105 Racer Top

4-pocket, V-neck with princess seaming and perforated panel details in front and back
Sizes: XXS - 5XL, CB: 25.5"
Color shown: 114 Cobalt



01 Black	G
08 New Royal	G
23 Indigo	G
37 Hunter	G
39 Teal	
40 Ciel	G
65 Wine	G
114 Cobalt	G
328 Bahama	G
905 Steel	G
2185 Dark Jade	•NEW SP
2096 Lavender Winds	•NEW SU

5106 Pulse Top

5-pocket, shaped V-neck with sporty seaming, perforated panels in front and back
Sizes: XXS - 5XL, CB: 25.5"
Color shown: 328 Bahama



01 Black	G
08 New Royal	G
23 Indigo	G
37 Hunter	G
39 Teal	
40 Ciel	G
65 Wine	G
114 Cobalt	G
328 Bahama	G
905 Steel	G
2185 Dark Jade	•NEW SP
2096 Lavender Winds	•NEW SU

All Styles Main Fabric
50% Polyester/43% Recycled Polyester/7% Spandex

G denotes colors supported for Groups



BOP597 Uplift Pant

5-pocket, knit waistband with drawcord, front and back welt pockets, single double cargo pocket, perforated hip and leg panels.

Sizes: XXS - 5XL, I: 30"

XXSP - XLP, I: 28"

XXST - XLT, I: 32"

Color shown: 2185 Dark Jade

Knit Accents Content:

88% Polyester/12% Spandex



01 Black	
08 New Royal	
23 Indigo	
65 Wine	•NEW 1/15
328 Bahama	•NEW 1/15
905 Steel	
2185 Dark Jade	•NEW SP
2096 Lavender Winds	•NEW SU

BOP513 Boost Jogger

3-pocket, double elastic waist with drawcord and perforated blocked detail leg

Sizes: XXS - 5XL, I: 30.5"

XXSP - XLP, I: 28.5"

XXST - XLT, I: 33.5"

Color shown: 65 Wine

Knit Accents Content:

88% Polyester/12% Spandex



01 Black	G
08 New Royal	G
23 Indigo	G
37 Hunter	G
39 Teal	
40 Ciel	G
65 Wine	G
114 Cobalt	G
328 Bahama	G
905 Steel	G
2185 Dark Jade	•NEW SP
2096 Lavender Winds	•NEW SU

5206 Stride Pant

5-pocket, yoga pant with cargo pocket, knit waistband and drawcord

Sizes: XXS - 5XL, I: 31.5"

XXSP - XLP, I: 29.5"

XXST - XLT, I: 33.5"

Color shown: 39 Teal

Knit Accents Content:

88% Polyester/12% Spandex



01 Black
08 New Royal
23 Indigo
37 Hunter
39 Teal
40 Ciel
65 Wine
114 Cobalt
328 Bahama
905 Steel

G denotes colors supported for Groups

All Styles Main Fabric
50% Polyester/43% Recycled Polyester/7% Spandex



5405 Endure Jacket

2-pocket, mock neck zip front with princess seams, side zip pockets, high-low hem

Sizes: XXS - 5XL, CB: 26"

Color shown: 08 New Royal

Zippers are all black except white has white zipper



01 Black
08 New Royal
23 Indigo
39 Teal
114 Cobalt
905 Steel

5409 Cadence Warm-Up

4-pocket, jewel neck with perforated racer style insets, dyed-to-match snap front, hidden pocket, zipper pocket with logo pull, high-low hem, and seamless knit sock cuff

Sizes: XXS - 5XL, CB: 27"

Color shown: 65 Wine

Knit Accents Content:
80% Polyester/20% Spandex



01 Black	G
08 New Royal	G
23 Indigo	G
37 Hunter	G
40 Ciel	G
65 Wine	G
114 Cobalt	G
328 Bahama	G
905 Steel	G

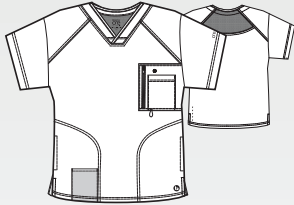
0115 Men's Amplify Top

5-pocket V-neck with raglan sleeve details, hidden pocket and chest pocket with a secure zip media pocket

Sizes: XS - 5XL, CB: 30"

Color shown: 37 Hunter

All zippers are black



01 Black	G
08 New Royal	G
23 Indigo	G
37 Hunter	G
39 Teal	
40 Ciel	G
65 Wine	G
114 Cobalt	G
328 Bahama	G
905 Steel	G

All Styles Main Fabric

50% Polyester/43% Recycled Polyester/7% Spandex

G denotes colors supported for Groups



BOP520 Men's Vortex Pant

6-pocket, drawcord full elastic waistband, single zip double cargo, inside coin pocket and perforated details jogger

Sizes: XS - 5XL, I: 30"

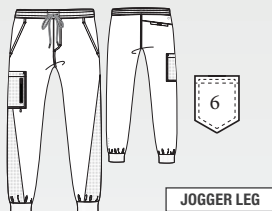
ST - XLT, I: 32"

XSS - 3XLS, I: 28"

Color shown: 905 Steel

Knit Accents Content:

94% Polyester/6% Spandex



JOGGER LEG

01 Black	G
08 New Royal	G
23 Indigo	G
37 Hunter	•NEW SU
65 Wine	•NEW SP
114 Cobalt	•NEW SU
328 Bahama	•NEW SP
905 Steel	G

0217 Men's Amplify Pant

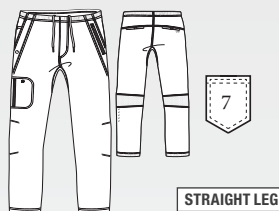
7-pocket, elastic waist cargo with drawcord, back perforated knee panels and functional zip fly front with gusseted inseam

Sizes: XS - 5XL, I: 32"

ST - XLT, I: 34"

XSS - 3XLS, I: 30"

Color shown: 65 Wine



STRAIGHT LEG

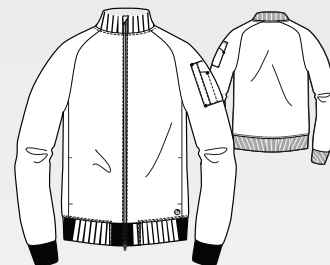
01 Black	G
08 New Royal	G
23 Indigo	G
37 Hunter	G
39 Teal	
40 Ciel	G
65 Wine	G
114 Cobalt	G
328 Bahama	G
905 Steel	G

BOW883 Amplify Warm-Up **NEW**

3-pocket bomber, knit neck and knit cuffs on raglan sleeves, 2-way zipper with cover, secure zip closure shoulder pocket with pen slots warm-up

Sizes: XS - 5XL, CB: 28"

Color shown: 23 Indigo



01 Black	•NEW SP
23 Indigo	•NEW SP

G denotes colors supported for Groups

All Styles Main Fabric
50% Polyester/43% Recycled Polyester/7% Spandex



New Spring Color

2189 Lime Juice



SKECHERS
by Barco

PRIMARY FABRIC CONTENT

54% Polyester | 40% Recycled Polyester | 6% Spandex



New Print

BOBS

from Skechers

When you purchase BOBS, a donation will be made to Petco Love to help save the lives of dogs and cats.



If you've ever shared your life with a pet, you know that love changes everything. Love is why we've teamed up with Petco Love to help create a better world for pets. When you purchase this product, a donation will be made to help save the lives of dogs and cats.



Eco-Friendly Fabric



4-Way Stretch



Moisture-Wicking



Comfort Included

BARCO
Made to Matter

SKECHERS™

Fabric Content

54% Polyester

40% Recycled Polyester

6% Spandex

Knit Accents Contain:

88% Polyester

12% Spandex

Spring
Delivery
12/1/22



SKT147 Dignity Tuck-In Top

1-pocket, V-neck with contrast rib, front yoke seam with badge loop, single chest pocket, high-low hem tuck-in top

Sizes: XXS - 5XL, CB: 26"

Color shown: 2189 Lime Juice

NEW COLORS

SPRING

White	Hunter	Ciel
Bahama	Lime Juice	

See page 78-79 for all details

SKP552 Theory Jogger

4-pocket, drawcord waistband mid-rise, with double cargo pocket and pen slot

Sizes: XXS - 5XL, I: 29"

XXSP - XLP, I: 27"

XST - XLT, I: 31"

Color shown: 2189 Lime Juice

NEW COLORS

SPRING

Teal	True Red	Lime Juice
------	----------	------------

See page 78-79 for all details



**Eco-Friendly
Fabric**

Fabric Content

54% Polyester
40% Recycled Polyester
6% Spandex

SK101 Breeze Top

3-pocket, virtual V-neck,
shaped hem, detailed cover
stitching, contrast back
neck binding

Sizes: XXS - 5XL, CB: 25.5"

Color shown: 2189 Lime Juice

SK201 Reliance Pant

3-pocket, flat front with tape
tie, branded, inside logo plush
elastic waistband, cargo pocket

Sizes: XXS - 5XL, I: 31.5"

XXSP - 2XLP, I: 29.5"

XXST - XLT, I: 33.5"

Color shown: 2189 Lime Juice

NEW COLOR

SPRING

Lime Juice

See page 78-79 for all details



SKT147 Dignity Tuck-In Top

1-pocket, V-neck with contrast rib, front yoke seam with badge loop, single chest pocket, high-low hem tuck-in top
Sizes: XXS - 5XL, CB: 26"
Color shown: 328 Bahama



AVAILABLE COLORS

Black	New Royal	White *NEW
Pewter	Hunter *NEW	Ciel *NEW
Navy	Wine	Bahama *NEW
Autumn Berry	Lime Juice *NEW	

See page 78-79 for all details

Fabric Content:
54% Polyester / 40% Recycled Polyester /
6% Spandex



SKP505 Focus Pant

3-pocket, contrast drawcord knit waistband mid-rise shaped leg with knit trim slant pockets and single welt cargo

Sizes: XXS - 5XL, I: 31.5"

XXSP - 2XLP, I: 29.5"

XST - XLT, I: 33.5"

Color shown: 328 Bahama

Knit Accents Content:
88% Polyester / 12% Spandex



MID-RISE
STRAIGHT LEG

AVAILABLE COLORS

Black	New Royal	White
Pewter	Hunter	Teal
Ciel	Navy	Wine
Bahama	New Grape	Eggplant
True Red	New Turquoise	Coral Lipstick
Autumn Berry	Lime Juice	

See page 78-79 for all details

❖ NOT SOLD ON AMAZON

BOBS

from Skechers

When you purchase BOBS, a donation will be made to Petco Love to help save the lives of dogs and cats.



If you've ever shared your life with a pet, you know that love changes everything. Love is why we've teamed up with Petco Love to help create a better world for pets. When you purchase this product, a donation will be made to help save the lives of dogs and cats.



**Eco-Friendly
Fabric**

SKT021-TRKT Tropical Kitty New

3-pocket, virtual V-neck, shaped hem,
detailed cover stitching

Sizes: XS - 5XL, CB: 25.5"

Pant shown: SK201-2067

Coordinating colors:



Black	White	Khaki	Bahama	Coral Lipstick	Lime Juice
-------	-------	-------	--------	----------------	------------

Fabric Content

54% Polyester

40% Recycled Polyester

6% Spandex



SK0408 Structure Warm-Up

3-pocket, rib collar and cuffs,
with zip front closure

Sizes: XS - 5XL, CB: 30"

Color shown: 41 Navy

Pant shown: SKP572-41

Seamless Cuff:

80% Polyester/20% spandex knit

Dyed-to-match Zippers

SK0112 Structure Top

1-pocket, crossover V-neck top
with chest pocket, full running
side step-cut side vent detail

Sizes: XS - 5XL, CB: 29.5"

Color shown: 41 Navy

Pant shown: SKP572-41

SK572 Structure Jogger

3-pocket, self full encased elastic
waistband with drawcord, front fly,
velcro closure single patch cargo
pocket, rib cuff jogger

Sizes: XS - 3XL, I: 29"

SS - XLS, I: 27"

Color shown: 41 Navy



**Eco-Friendly
Fabric**

SK0112 Structure Top

1-pocket, crossover V-neck top with chest pocket, full running side step-cut side vent detail
Sizes: XS - 5XL, CB: 29.5"
Color shown: 08 New Royal

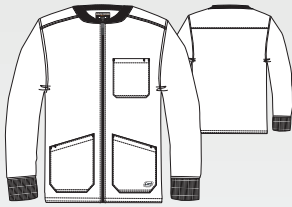


01 Black
08 New Royal
10 White
18 Pewter
37 Hunter
39 Teal
40 Ciel
41 Navy
65 Wine
230 Khaki
328 Bahama
503 Galaxy
1276 New Grape
1277 Eggplant
1295 True Red

SK0408 Structure Warm-Up

3-pocket, rib collar and cuffs, with zip front closure
Sizes: XS - 5XL, CB: 30"
Color shown: 328 Bahama

Seamless Cuff:
80% Polyester/20% spandex knit
Dyed-to-match Zippers

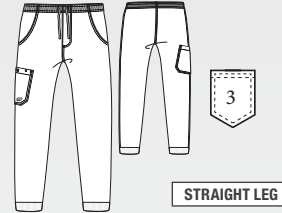


01 Black
08 New Royal
10 White
18 Pewter
37 Hunter
39 Teal
40 Ciel
41 Navy
65 Wine
230 Khaki
328 Bahama
503 Galaxy
1276 New Grape
1277 Eggplant
1295 True Red

SKP572 Structure Jogger

3-pocket, self full encased elastic waistband with drawcord, front fly, velcro closure single patch cargo pocket, rib cuff jogger
Sizes: XS - 3XL, I: 29"
SS - XLS, I: 27"
Color shown: 65 Wine

Knit Accents Content:
94% Polyester/6% Spandex

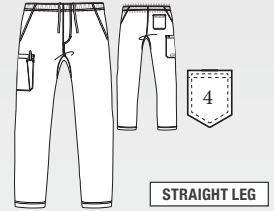


STRAIGHT LEG

01 Black
08 New Royal
18 Pewter
40 Ciel
41 Navy
65 Wine
328 Bahama

SK0215 Structure Pant

4-pocket, full elastic waistband drawcord, inseam gusset, cargo pocket
Sizes: XS - 5XL, I: 32"
XSS - XLS, I: 30"
ST - XLT, I: 34"
Color shown: 40 Ciel



STRAIGHT LEG

01 Black
08 New Royal
10 White
18 Pewter
37 Hunter
39 Teal
40 Ciel
41 Navy
65 Wine
230 Khaki
328 Bahama
503 Galaxy
1276 New Grape
1277 Eggplant
1295 True Red

All Styles Main Fabric
54% Polyester/40% Recycled Polyester/6% Spandex

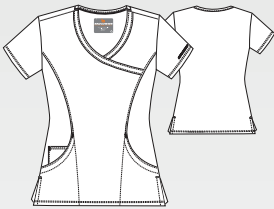


SKT147 Dignity Tuck-In Top
1-pocket, V-neck with contrast rib, front yoke seam with badge loop, single chest pocket, high-low hem tuck-in top
Sizes: XXS - 5XL, CB: 26"
Color shown: 2067 Autumn Berry



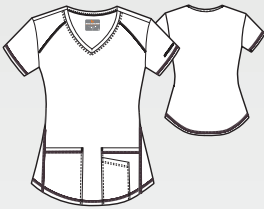
01 Black
08 New Royal
10 White •NEW 1/15
18 Pewter
37 Hunter •NEW 1/15
40 Ciel •NEW SP
41 Navy
65 Wine
328 Bahama •NEW SP
2067 Autumn Berry
2189 Lime Juice •NEW SP

SK102 Reliance Top
3-pocket, V-neck surplice with front princess seams, side vent detail, contrast back neck binding
Sizes: XXS - 5XL, CB: 25.5"
Color shown: 1277 Eggplant



01 Black G
08 New Royal G
10 White G
18 Pewter G
37 Hunter G
39 Teal G
40 Ciel G
41 Navy G
65 Wine G
230 Khaki
328 Bahama
503 Galaxy G
1276 New Grape
1277 Eggplant
1295 True Red
1659 New Turquoise
1254 Coral Lipstick
2067 Autumn Berry

SK101 Breeze Top
3-pocket, virtual V-neck, shaped hem, detailed cover stitching, contrast back neck binding
Sizes: XXS - 5XL, CB: 25.5"
Color shown: 40 Ciel



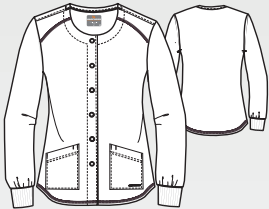
01 Black G
08 New Royal G
10 White G
18 Pewter G
37 Hunter G
39 Teal G
40 Ciel G
41 Navy G
65 Wine G
230 Khaki
328 Bahama G
503 Galaxy G
1276 New Grape G
1277 Eggplant G
1295 True Red
1659 New Turquoise G
1254 Coral Lipstick
2067 Autumn Berry
2189 Lime Juice •NEW SP

SKT025 Focus Top
6-pocket crossover V-neck with side entry pockets, PDA pocket and mini spade pocket
Sizes: XXS - 5XL, L: 25.5"
Color shown: 39 Teal



01 Black
08 New Royal
10 White
18 Pewter
37 Hunter
39 Teal
40 Ciel
41 Navy
65 Wine
328 Bahama
1276 New Grape •NEW SP
1277 Eggplant •NEW 1/15
1295 True Red
1254 Coral Lipstick
2067 Autumn Berry

SK401 Stability Warm-Up
2-pocket, round neck, snap front closure, dyed-to-match seamless knit sock cuff sleeves, contrast back neck binding
Sizes: XS - 5XL, CB: 27"
Color shown: 37 Hunter
Seamless Cuff:
100% Polyester



01 Black G
08 New Royal G
10 White G
18 Pewter G
37 Hunter G
39 Teal G
40 Ciel G
41 Navy G
65 Wine G
230 Khaki
328 Bahama G
503 Galaxy G
1276 New Grape G
1277 Eggplant G
1295 True Red
1659 New Turquoise G

All Styles Main Fabric
54% Polyester/40% Recycled Polyester/6% Spandex

G denotes colors supported for Groups



SKP552 Theory Jogger

4-pocket, drawcord waistband
mid-rise, with double cargo
pocket and pen slot
Sizes: XXS - 5XL, I: 29"
XXSP - XLP, I: 27"
XST - XLT, I: 31"
Color shown: 65 Wine

Knit Accents Content:
88% Polyester/12% Spandex



MID-RISE
JOGGER LEG

01 Black	G
08 New Royal	G
10 White	G
18 Pewter	G
37 Hunter	G
39 Teal	•NEW SP
40 Ciel	G
41 Navy	G
65 Wine	G
230 Khaki	
328 Bahama	G
[Diagonal Stripes]	
1295 True Red	•NEW SP
[Diagonal Stripes]	
2067 Autumn Berry	
2189 Lime Juice	•NEW SP

SK201 Reliance Pant

3-pocket, flat front with tape
tie, branded, inside logo plush
elastic waistband, cargo pocket
Sizes: XXS - 5XL, I: 31.5"
XXSP - 2XLP, I: 29.5"
XXST - XLT, I: 33.5"
Color shown: 39 Teal

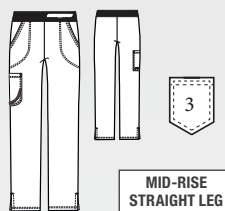


MID-RISE
SHAPED LEG

01 Black	G
08 New Royal	G
10 White	G
18 Pewter	G
37 Hunter	G
39 Teal	G
40 Ciel	G
41 Navy	G
65 Wine	G
230 Khaki	
328 Bahama	G
503 Galaxy	
1276 New Grape	
1277 Eggplant	
1295 True Red	
1659 New Turquoise	
1254 Coral Lipstick	
2067 Autumn Berry	
2189 Lime Juice	•NEW SP

SK202 Breeze Pant

3-pocket, logo plush elastic
waistband, cargo pocket
Sizes: XXS - 5XL, I: 31.5"
XXSP - 2XLP, I: 29.5"
XXST - XLT, I: 33.5"
Color shown: 1295 True Red



MID-RISE
STRAIGHT LEG

01 Black	G
08 New Royal	G
10 White	G
18 Pewter	G
37 Hunter	G
39 Teal	G
40 Ciel	G
41 Navy	G
65 Wine	G
230 Khaki	G
328 Bahama	G
503 Galaxy	G
1276 New Grape	G
1277 Eggplant	
1295 True Red	G
1659 New Turquoise	
1254 Coral Lipstick	
2067 Autumn Berry	
[Diagonal Stripes]	

SKP505 Focus Pant

3-pocket, contrast drawcord knit
waistband mid-rise shaped leg
with knit trim slant pockets and
single welt cargo
Sizes: XXS - 5XL, I: 31.5"
XXSP - 2XLP, I: 29.5"
XST - XLT, I: 33.5"
Color shown: 328 Bahama

Knit Accents Content:
88% Polyester/12% Spandex



MID-RISE
SHAPED LEG

01 Black	
08 New Royal	
10 White	
18 Pewter	
37 Hunter	
39 Teal	
40 Ciel	
41 Navy	
65 Wine	
[Diagonal Stripes]	
328 Bahama	
[Diagonal Stripes]	
1276 New Grape	
1277 Eggplant	
1295 True Red	
1659 New Turquoise	
1254 Coral Lipstick	
2067 Autumn Berry	
[Diagonal Stripes]	

G denotes colors supported for Groups

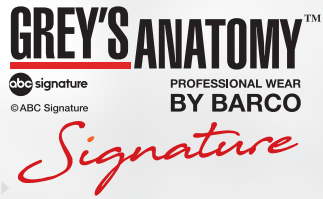
All Styles Main Fabric
54% Polyester/40% Recycled Polyester/6% Spandex



A woman with dark hair, wearing a white lab coat over a dark grey V-neck top and dark grey trousers, is sitting on a silver metal stool. She has a stethoscope around her neck and her glasses are perched on her head. She is looking directly at the camera with a slight smile. The background is a plain, light grey wall and floor.









JACKET REQUIRED

LAB COATS



Fabric Content












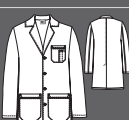
70% Polyester / 25% Rayon / 5% Spandex Twill
WITH 4-WAY STRETCH

Style:	Length:	Sizes:	Tall:	Pockets	Buttons	Description	Sleeve Length:	Sketch:
2405 2405X	31-33.5" 33.5-34.25"	XXS-XL 2XL-5XL	NA		3	Women's round notch collar lab coat, with 2 front pockets, 1 chest pocket, pen slot, and loose back 3 button adjustable back belt.	24-25.25" 24-24.75"	
GNC003 GNC003X	33.5-35.5" 33.5-34.25"	XS-XL 2XL-3XL	NA		1	Women's modern flat collar, snap front closure, inside chest pocket, interior fully lined back vent lab coat	24.25-25.25"	
GNC001 GNC001X	33.5-35.5" 35.5-35.75"	XS-XL 2XL-3XL	NA		3	Women's lab coat with 2 front pockets, long sleeve, princess front and back with 2 back vents	24.25-24.25" 24.25-24.5"	
2402 2402X	35" 35"	XXS-XL 2XL-3XL	NA		3	Women's lab coat with 2 front pockets, back sewn down belt, and front and back princess seams.	24-25.25" 24.5-24.75"	



Fabric Content

80% Polyester / 20% Cotton Peached Twill

Style:	Length:	Sizes:	Tall:	Pockets	Buttons	Description	Sleeve Length:	Sketch:
GRC950 GRC950X	29-31.5" 31.5-32.25"	XXS-XL 2XL-5XL	NA		4	Women's 2-piece long sleeve lab coat, with button sleeve details and contrast printed lining and cuff facing	24-25.25" 24.5-25.25"	
7446 7446X	30.5-33" 33-33.75"	XXS-XL 2XL-5XL	NA		3	Women's lab coat with button tab front pockets, loose back button belt, and back vent.	23-24.25" 24.25-25"	
4481 4481X	33.5-35.5" 35-35.75"	XS-XL 2XL-5XL	NA		4	Women's lab coat with princess seamed front, up dated rounded collar, inset belt, loose button back belt, and back vent.	23.5-24.5" 24.125-24.875"	
GRC951 GRC951X	33-35.5" 35.5-36.25"	XXS-XL 2XL-5XL			4	Women's 2-piece long sleeve, crossover yoke detail, and belted back waist	24.25-25.5" 24.5-25.25"	
GRSC009	36-38.25"	32-50			3	Men's 3-button, side seam entry slits, button sleeves, back vent lab coat	25.25-27"	
0914 0914X 0914L 0914XL	35.75-37.75" 38-38.75" 39.75-41.75" 42-42.75"	32-48 50-56	36-48L 50-56L		4	Men's lab coat with tablet pockets, inside larger pockets, chest pocket with pen slots center back French seam, and extra length vent.	23.875-25.25" 25.5-26" 24.875-26.25" 26.5-27"	

GNC003 Alexis

Women's modern flat collar, snap front closure, inside chest pocket, interior fully lined back vent lab coat

Sizes: XS-3XL

Length*: 34"

Sleeve length: 24.5"

Buttons: 1



*Women's Lab coats are based on size small, see page 86-87 for all details.

GNC001 Eve

Women's lab coat with 2 front pockets, long sleeve, princess front and back with 2 back vents

Sizes: XS-3XL

Length*: 34"

Sleeve length: 24.5"

Buttons: 3



Fabric content

75% Polyester / 20% Rayon / 5% Spandex

WITH 4-WAY STRETCH



See page 81 for all details. Garment outlines added to highlight details only.

GREY'S ANATOMY™

abc signature PROFESSIONAL WEAR
© ABC Signature BY BARCO

Signature

2402 Morgan

Women's lab coat with 2 front pockets, back sewn down belt, and front and back princess seams.

Sizes: XXS-3XL

Length*: 35"

Sleeve length: 24.5"

Buttons: 3



Fabric content

75% Polyester/20% Rayon/5% Spandex

WITH 4-WAY STRETCH

Garment outlines added to highlight details only.



GREY'S ANATOMY™

abc signature PROFESSIONAL WEAR
© ABC Signature BY BARCO

Signature

2405 Brooke

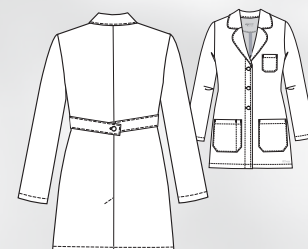
Women's round notch collar lab coat, with 2 front pockets, 1 chest pocket, pen slot, and loose back 3 button adjustable back belt.

Sizes: XXS-5XL

Length*: 32"

Sleeve length: 24.5"

Buttons: 3



Fabric content

75% Polyester / 20% Rayon / 5% Spandex

WITH 4-WAY STRETCH

7446 Hannah

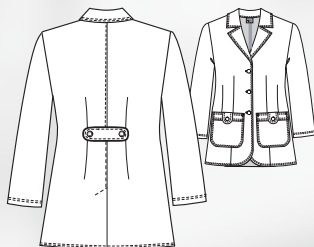
Women's lab coat with waist seam, front and back tapered darts, and back vent.

Sizes: XXS-5XL

Length*: 31.5"

Sleeve length: 23.5"

Buttons: 3



Fabric Content

80% Polyester / 20% Cotton Peached Twill



See page 81 for all details. Garment outlines added to highlight details only.

GRC950 Ivy

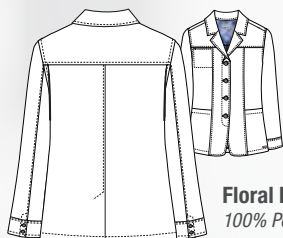
Women's 2-piece long sleeve lab coat, with button sleeve details and contrast printed lining and cuff facing

Sizes: XXS-5XL

Length*: 30"

Sleeve length: 24.5"

Buttons: 4



Floral Print Contrast
100% Polyester





GRC951 Tricia

Women's 2-piece long sleeve, crossover yoke detail, and belted back waist

Sizes: *XXS-5XL*

Length*: *34"*

Sleeve length: *24.75"*

Buttons: *4*



Fabric Content

80% Polyester / 20% Cotton / Peached Twill

See page 81 for all details. Garment outlines added to highlight details only.



4481 Lily

Women's lab coat with princess seamed front, up dated rounded collar, inset belt, loose button back belt, and back vent.

Sizes: *XS-5XL*

Length*: *34"*

Sleeve length: *23.75"*

Buttons: *4*



Fabric Content

75% Polyester / 20% Rayon / 5% Spandex

WITH 4-WAY STRETCH

GRSC009 Liam

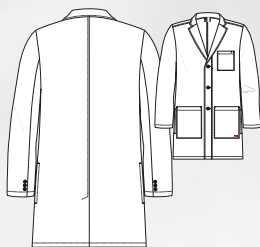
Men's 3-button, side seam entry slits,
 button sleeves, back vent lab coat

Sizes: 32-50

Length: 37"*

Sleeve length: 26"

Buttons: 3



See page 81 for all details.

Garment outlines added to highlight details only.



0914 Noah

Men's lab coat with tablet pockets, inside larger pockets, chest pocket with pen slots center back French seam, and extra length vent.

Sizes: 32-56

Length: 37"*

Sleeve length: 24.75"

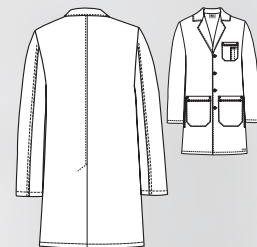
0914L

Sizes: 36-48L, 50-56L

Length: 41"*

Sleeve length: 25.75"

Buttons: 4



Fabric Content

80% Polyester / 20% Cotton Peached Twill

See page 81 for all details.

Garment outlines added to highlight details only.

Marketing, Simplified.

EXPLORE YOUR NEW BARCO DIGITAL MARKETING RESOURCE CENTER



Our new resource center provides everything needed to promote Barco's Family of Brands – in one convenient location.

Packed with an array of digital content: seasonal catalogs, marketing collateral, digital brand toolkits, high-quality product & lifestyle photography, product content, and more!

PLUS, updated support for SellersCommerce and The Uniform Solution platforms.

To access, scan the QR CODE or login to **B2B.BARCOUNIFORMS.COM**



HOW TO MEASURE

Take all measurements over undergarments using standard measuring tape held in a relaxed straight line.

Chest/Bust: Place measuring tape under the arms to measure the distance around the shoulder blades and the fullest part of the bust/chest. Do not hold the tape too tight.

Waist: Place measuring tape around the natural waistline.

Hip: Stand with feet a few inches apart and measure around the fullest part of your hips wearing your undergarments.

Inseam: Measure from the crotch to the desired length of the pant, breaking at the top of the shoe and just above the heel in the back. Appropriate shoes should be worn.



FIT SIZE GUIDE

BASED ON YOUR BODY MEASUREMENTS

Women's/Women's Labs

Size	XXS	XS	S	M	L	XL	2XL	3XL	4XL	5XL
	00	0-2	4-6	8-10	12-14	16-18	20-22	24-26	28-30	32-34
Bust	31-32	33-34	35-36	37-39	40-42	43-45	46-48	50-52	54-56	58-60
Waist	23½-24½	25½-26½	27½-28½	29½-31½	32½-34½	35½-37½	39-41	43-45	47-49	51-53
Hip	34-35	36-37	38-39	40-42	43-45	46-48	49-51	53-55	57-59	61-63

Men's

Size	XXS	XS	S	M	L	XL	2XL	3XL	4XL	5XL
	29-31	32-34	35-37	38-40	42-44	46-48	50-52	54-56	58-60	62
Chest	30-32	33-35	36-38	39-41	43-45	47-49	51-53	55-57	59-61	63-65
Waist	23½-25½	26½-28½	29½-31½	32½-34½	36½-38½	40½-42½	44½-46½	48½-50½	52½-54½	56½-58½
Hip	30½-31½	33½-34½	36½-37½	38½-40½	42½-44½	46½-48½	49-51	53-55	57-59	61-63

Men's Labs

Size	32	34	36	38	40	42	44	46	48	50	52	54	56
Chest	32	34	36	38	40	42	44	46	48	50	52	54	56
Waist	26	28	30	32	34	36	38	40	42	44	46	48	50

Unisex/Unisex Labs (we recommend to size down for women)

Size	XXS	XS	S	M	L	XL	2XL	3XL	4XL	5XL
	29	30-32	34-36	38-40	42-44	46-48	50-52	54-56	58-60	62
Chest	30-32	33-35	36-38	39-41	43-45	47-49	51-53	55-57	59-61	63-65
Waist	23½-25½	26½-28½	29½-31½	32½-34½	36½-38½	40½-42½	44½-46½	48½-50½	52½-54½	56½-58½
Hip	30½-31½	33½-34½	36½-37½	38½-40½	42½-44½	46½-48½	49-51	53-55	57-59	61-63

Dear Valued Retail Partner,

The healthcare workers who care for our communities deserve our very best: the best fit, the best fabrics, and modern healthcare wear fashions that stand the test of time. Let's work together to bring customers the quality and function they've come to expect from Barco brands, along with the runway-inspired fashion updates they crave.

While maintaining the value of our brands remains key to delivering on our high standards and maximizing your gross margin, we also recognize the power of a promotion to drive traffic. We're excited to, once again, offer 20% off MAP pricing during select dates in 2023.

Below, please find the 2023 Key Promotional Dates when you are authorized to promote Barco brands at up to 20% off* MAP pricing. Please note that BARCO UNIFY is not listed, as this collection is excluded from all MAP promotions. You can find more details in our Terms & Conditions.

Winter Promotion: Friday, January 6th – Monday, January 16th

Nurse Appreciation Week: Friday, May 5th – Monday, May 15th

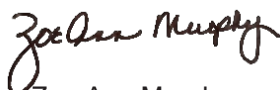
Customer Appreciation: Friday, August 4th – Monday, August 14th

Black Friday & Cyber Monday: Wednesday, November 22nd – Tuesday, November 28th

***BARCO UNIFY cannot be advertised below MAP during any of the promotion periods listed above.**

We are so grateful for your ongoing partnership, and we look forward to the journey ahead!

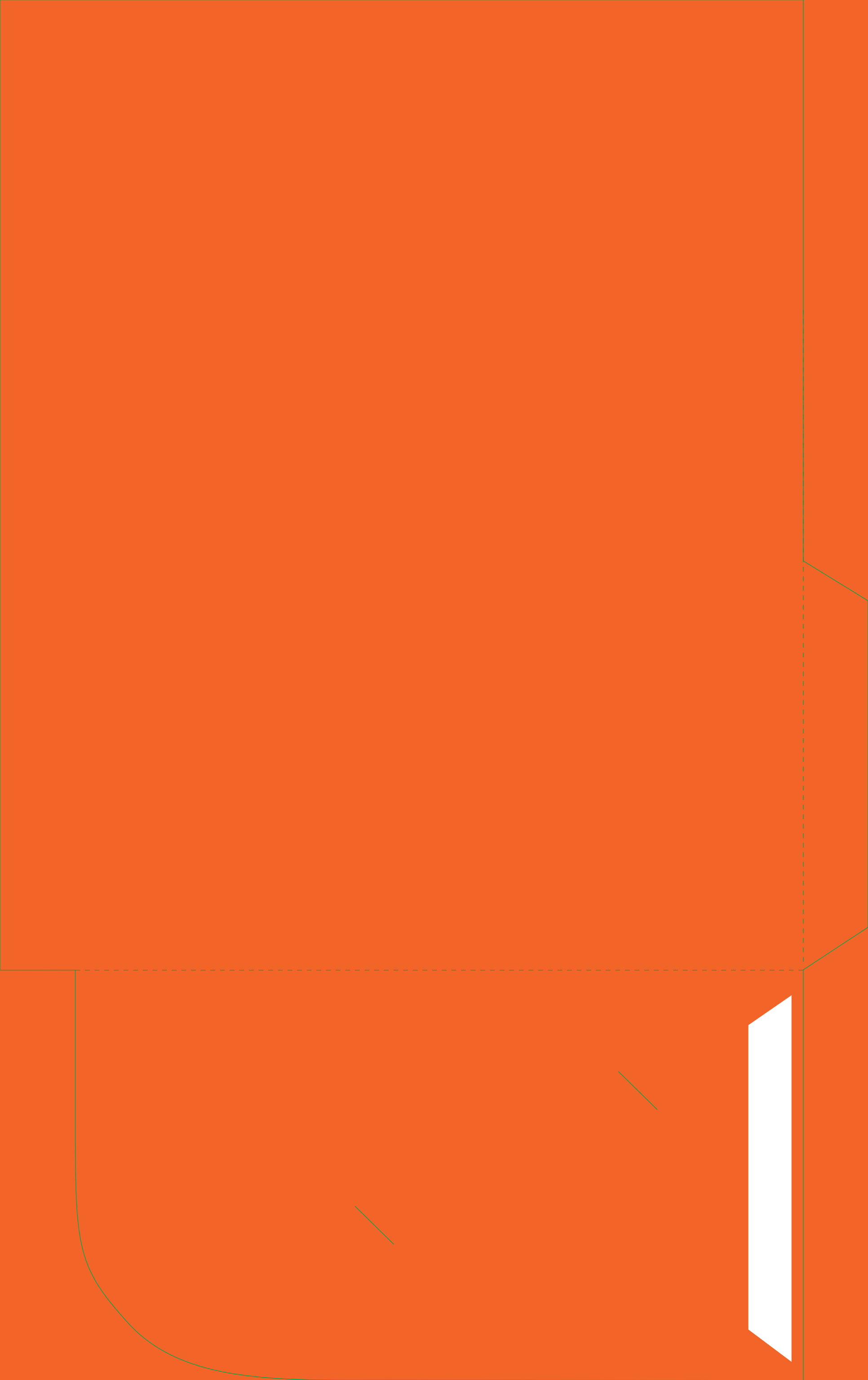
Yours truly,



Zoe Ann Murphy
SVP, Global Healthcare Sales



Kim Potvin
VP, US Retail Sales





In honor of the healthcare professionals who go above and beyond to make a difference in our lives, Barco's Nightingales Foundation provides critical resources to children in need. Since 2020, our Foundation has focused its efforts on Haiti, which has the highest hunger rates in the Western hemisphere. Our two dedicated teams make monthly trips to remote villages near our solar wells, traversing rough terrain to deliver food to 6,000 families in hard-to-reach, underserved areas.

Because of your continued support, we're unwavering in our mission to keep hope alive. Thank you for helping to make a difference

BARCO
Made to Matter

barcosnightingales.org